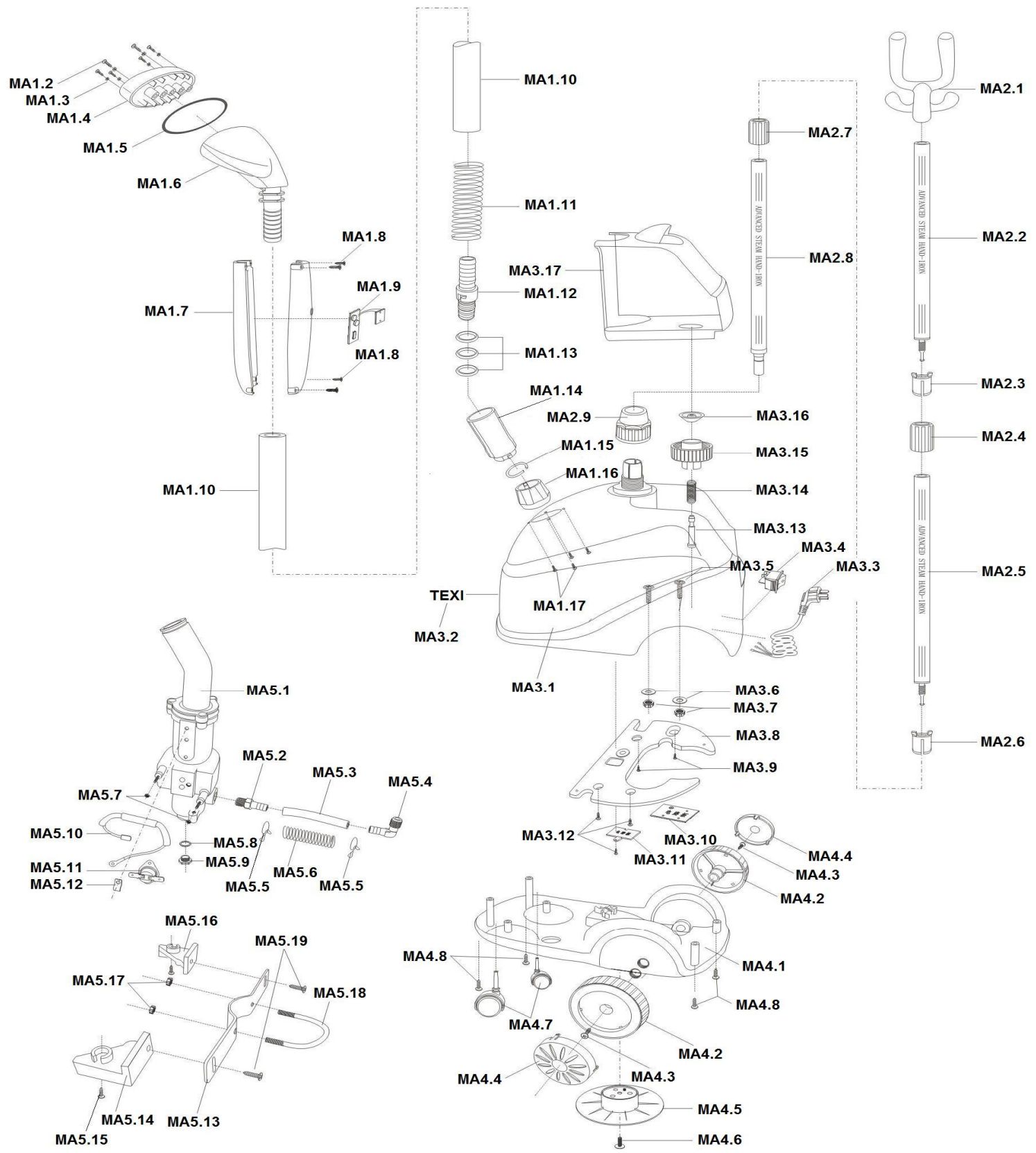


# TEXI MASTER



<b>Code</b>	<b>Name</b>	<b>MA1.17</b>	Screw M3x8	<b>MA3.7</b>	The screw cap M4	<b>MA4.6</b>	Screw M4x16
<b>MA1.2</b>	Screw M4x16	<b>MA2.1</b>	The pothook for hanging the sprinkler	<b>MA3.8</b>	The body for increasing weight	<b>MA4.7</b>	Screw M4x16
<b>MA1.3</b>	The shim for the sprinkler lid	<b>MA2.2</b>	The upper pole	<b>MA3.9</b>	Screw M4x16	<b>MA4.8</b>	Screw M4x16
<b>MA1.4</b>	The lid for the steam sprinkler	<b>MA2.3</b>	The upper inflatable pole	<b>MA3.10</b>	The circuit main board	<b>MA5.1</b>	The bent pole
<b>MA1.5</b>	The seal loop for the sprinkler	<b>MA2.4</b>	The protective casing of the upper pole	<b>MA3.11</b>	The power control board	<b>MA5.2</b>	The water inlet joint
<b>MA1.6</b>	The sprinkler	<b>MA2.5</b>	The middle pole	<b>MA3.12</b>	Screw M3x8	<b>MA5.3</b>	Small leather pipe
<b>MA1.7</b>	The handler of the steam sprinkler	<b>MA2.6</b>	The lower inflatable pole	<b>MA3.13</b>	The sliding needle for the lid of the kettle	<b>MA5.4</b>	The bent joint for the water inlet
<b>MA1.8</b>	Screw	<b>MA2.7</b>	The protective casing of the lower pole	<b>MA3.14</b>	Small spring	<b>MA5.5</b>	The small circlip
<b>MA1.9</b>		<b>MA2.8</b>	The lower pole	<b>MA3.15</b>	The lid of the kettle totality	<b>MA5.6</b>	The small spring of the protection pipe
<b>MA1.10</b>	Air vessel	<b>MA2.9</b>	The revolvable handle for locking the pole	<b>MA3.16</b>	The V-shape stray for the lid of the kettle	<b>MA5.7</b>	The screw cap 3 mm
<b>MA1.11</b>	The spring of the protection pipe	<b>MA3.1</b>	The upper hull	<b>MA3.17</b>	The kettle	<b>MA5.8</b>	The sealed shim
<b>MA1.12</b>	The joint of the steam pipe	<b>MA3.2</b>	Nameplate	<b>MA4.1</b>	The behind hull	<b>MA5.9</b>	The screw for blocking water
<b>MA1.13</b>	The seal loop	<b>MA3.3</b>	The power bus	<b>MA4.2</b>	The behind hull	<b>MA5.10</b>	The heat protector 250 degree
<b>MA1.14</b>	The casing of the joint of the steam pipe	<b>MA3.4</b>	Switch	<b>MA4.3</b>	Screw M4x16	<b>MA5.11</b>	Temperature control for 150°C
<b>MA1.15</b>	The circlip	<b>MA3.5</b>	The water level indication screw	<b>MA4.4</b>	The lid of the behind wheel	<b>MA5.12</b>	The heat insulated casing
<b>MA1.16</b>	The base of the joint	<b>MA3.6</b>	The seal loop	<b>MA4.5</b>	The base for surrounding wire		