

高速链缝机 零件手册

ZJ4810/ZJ3800/ZJ3820

HIGH-SPEED CHAINSTITCHER SEWING MACHINE PARTS BOOK



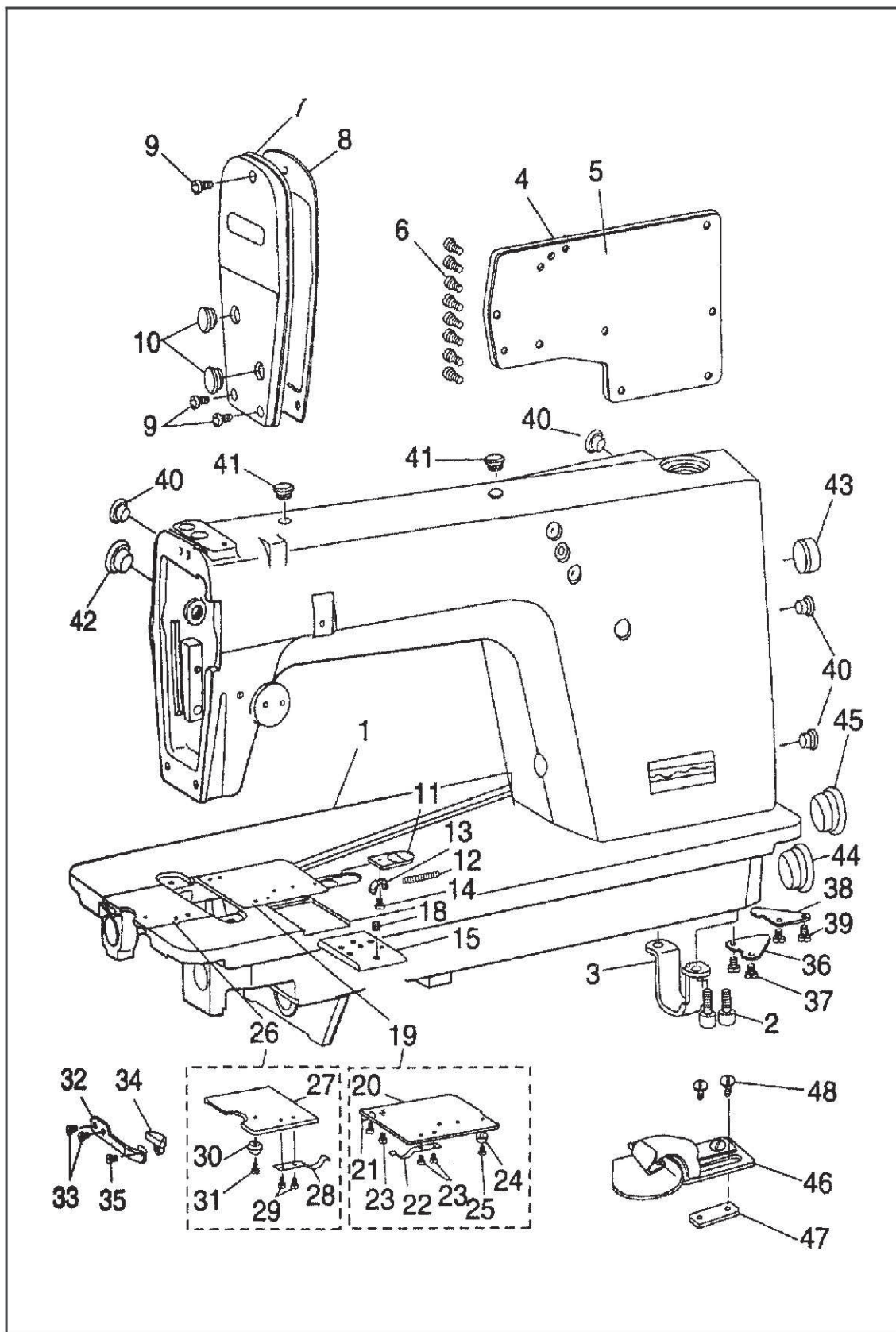
零件样本

Parts Book

1、机壳分组件 Arm Bed Components	13-14
2、上轴、针杆分组件 Main Shaft & Thread Bar Components	15-16
3、压料分组件 Presser Bar Components	17-18
4、送料分组件 Feed Mechanism Components	19-20
5、送料调节分组件 Feed Regulating Components	21-22
6、弯针勾线分组件 Loper Thread Retainer Complete	23-24
7、挑线、松线、夹线分组件 Thread Take-up, Tension, And Tension Releasing Assembly	25-27
8、润滑分组件 Lubrication Components	28
9、油盘、膝抬压脚分组件 Oil Reservoir & Knee Lifter Components	29
10、机头附件 Machine Head Accessories	30
11、四线团架分组件 Quadruple-thread Spool Stand Asm	31
12、高速单针链缝机 Model One-needle High Speed Chainstitcher	32
13、双针双列与双针单列零件变化表 List Of Parts Change	33
14、双针双列、双针单列附件一览表 List Throat Of & its Accessories	34
15、高速三针链缝机 Model Three-needle High Speed Chainstitcher	35
16、直驱机型专用件 Directly Driving Type Exclusive Parts	36

(本样本中图样、件号、名称、结构仅供参考,如有变动,以产品实物为准)

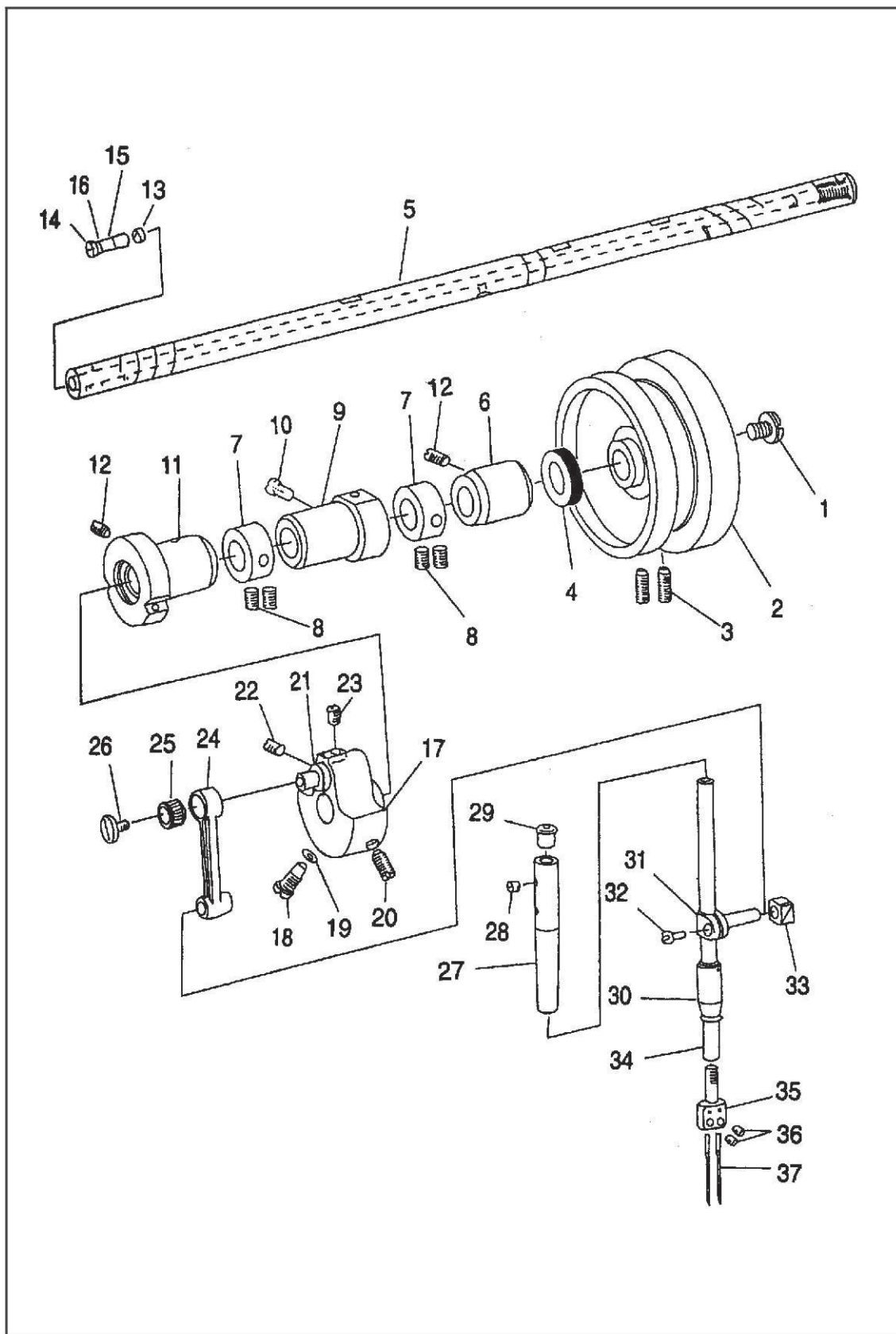
1. 机壳分组件 Arm bed components



1. 机壳分组件 Arm bed components

序号 Ref. No.	件号 Part No	名称 Description	数量 Arm. Req.
1	40-1-1	机壳部件 Arm Bed Complete	1
2	40-1-2	底板支承板螺钉 Bed Screw Stud	2
3	40-1-3	底板支承板 Bed Support	1
4	40-1-4	后窗板 Side Plate	1
5	40-1-5	后窗板垫 Gasket	1
6	40-1-6	后窗板螺钉 Side Plate Screw	8
7	40-1-7	面板 Face Plate Asm.	1
8	40-1-8	面板垫 Face Plate Gasket	1
9	40-1-9	面板螺钉 Screw	3
10	40-1-10	面板橡皮塞 Rubber Plug	2
11	40-1-11	凸轮盖压板 Cam Cover Latch	1
12	40-1-12	凸轮盖压板弹簧 Spring	1
13	40-1-13	凸轮盖压板弹簧座 Spring Suspension	1
14	40-1-14	凸轮盖压板座螺钉 Screw	1
15	40-1-15	附件安装板 Attachment Installing Plate	1
18	40-1-16	附件安装板定位螺钉 Screw	1
19	40-1-17	凸轮盖部件 Cam Cover Asm	(1)
20	40-1-18	凸轮盖 Cam Cover	1
21	40-1-19	凸轮盖托板 Cam Cover	1
22	40-1-20	凸轮盖弹簧 Spring	1
23	40-1-21	凸轮盖弹簧螺钉 Screw	4
24	40-1-22	凸轮盖导轮 Cam Cover Guide	1
25	40-1-23	凸轮盖导轮螺钉 Screw	1
26	40-1-24	推板部件 Bed Slide Asm.	(1)
27	40-1-25	推板 Bed Slide	1
28	40-1-26	推板簧 Spring	1
29	40-1-27	推板簧螺钉 Screw	2
30	40-1-28	推板导轮 Bed Slide Guide	1
31	40-1-29	推板导轮螺钉 Screw	1
32	40-1-30	推板锁簧 Bed Slide Lock Spring	1
33	40-1-31	推板锁簧螺钉 Screw	2
34	40-1-32	推板簧扳手 Latch	1
35	40-1-33	推板簧扳手螺钉 Screw	1
36	40-1-34	送料轴底板挡油板 Bed Oil Shield	1
37	40-1-35	底板挡油板螺钉 Screw	2
38	40-1-36	拾牙轴底板挡油板 Bed Oil Shield	1
39	40-1-37	底板挡油板螺钉 Screw	2
40	40-1-38	轴套定位螺孔塞 Rubber Plug	4
41	40-1-39	上轴套油线孔塞 Rubber Plug	2
42	40-1-40	针杆曲柄螺孔塞 Rubber Plug	1
43	40-1-41	送料针距调节器孔塞 Rubber Plug	1
44	40-1-42	拾牙轴孔塞 Rubber Plug	1
45	40-1-43	下轴孔塞 Rubber Plug	1
46	40-1-44	卷边器部件(1/4") Folder	1
47	40-1-45	卷边器垫块 Gasket	1
48	40-1-46	卷边器螺钉 Screw	2

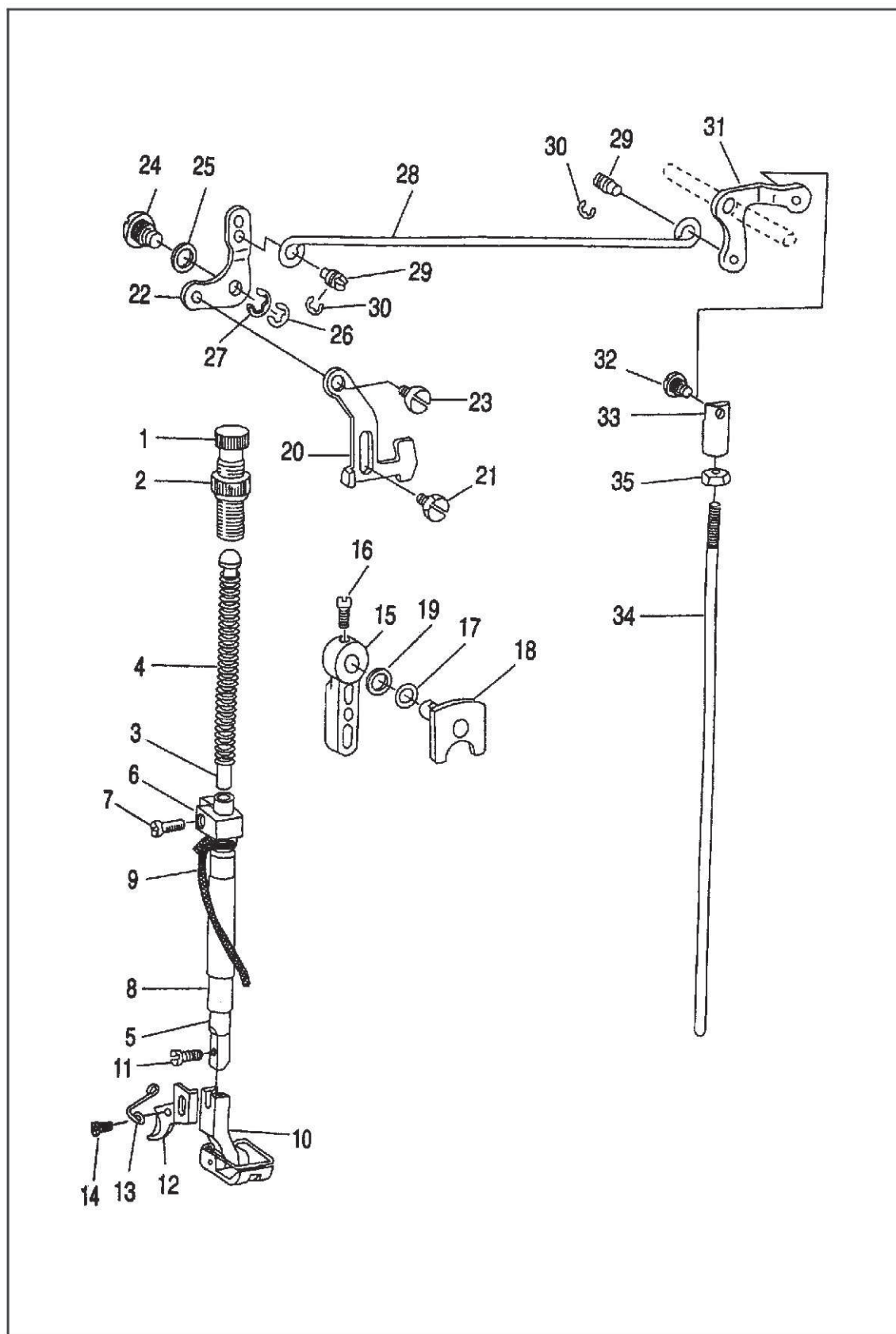
2. 上轴针杆分组件 Main shaft & needle bar components



2. 上轴针杆分组件 Main shaft & needle bar components

序号 Ref. No.	件号 Part No	名称 Description	数量 Arm. Req.
1	40-2-1	上轴安全螺钉 End Screw	1
2	40-2-2	上轮 Hand Wheel	1
3	40-2-3	上轮螺钉 Screw	2
4	40-2-4	上轮油封 Oil Seal	1
5	40-2-5	上轴 Main Shaft	1
6	40-2-6	上轴后轴套部件 Main Shaft Bushing, Rear	1
7	40-2-7	上轴挡圈 Main Shaft Thrust Collar	2
8	40-2-8	上轴挡圈螺钉 Screw	4
9	40-2-9	上轴中轴套部件 Main Shaft Bushing Intermediate	1
10	40-2-10	中轴套螺钉 Screw	1
11	40-2-11	上轴前轴套部件 Main Shaft Bushing, Front	1
12	40-2-12	轴套螺钉 Screw	2
13	40-2-13	曲柄油量限制毡 Roller Felt	1
14	40-2-14	曲柄油量调节销 Crank Oil Adjusting Pin	1
15	40-2-15	曲柄油量调节销套 Rubber Bushing	1
16	40-2-16	曲柄油量调节销O形圈 O-Rubber Ring	1
17	40-2-17	针杆曲柄 Counterweight Asm.	1
18	40-2-18	针杆曲柄定位螺钉 Screw	1
19	40-2-19	定位螺钉O形圈 O-Rubber Ring	1
20	40-2-20	针杆曲柄紧固螺钉 Screw	1
21	40-2-21	针杆连杆销 Needle Crank	1
22	40-2-22	挑线曲柄定位螺钉 Screw	1
23	40-2-23	挑线曲柄螺钉 Screw	1
24	40-2-24	针杆连杆 Needle Bar Crank Rod	1
25	40-2-25	针杆连杆滚针轴承 Needle Rollar Bearing	1
26	40-2-26	针杆连杆左旋螺钉 Left Twist Screw	1
27	40-2-27	针杆上衬套 Needle Bar Bushing Upper	1
28	40-2-28	针杆上衬套螺钉 Screw	1
29	40-2-29	针杆上衬套孔塞 Rubber Plug	1
30	40-2-30	针杆下衬套 Needle Bar Bushing, Lower	1
31	40-2-31	针杆连接柱 Needle Bar Connection Asm.	1
32	40-2-32	针杆连接柱螺钉 Screw	1
33	40-2-33	针杆连接柱滑块 Crank Slide Block	1
34	40-2-34	针杆 Needle Bar	1
35	40-2-35	针夹(1/4") Needle Clamp (1/4")	1
36	40-2-36	支针螺钉 Screw	2
37	40-2-37	机针 Needle	2

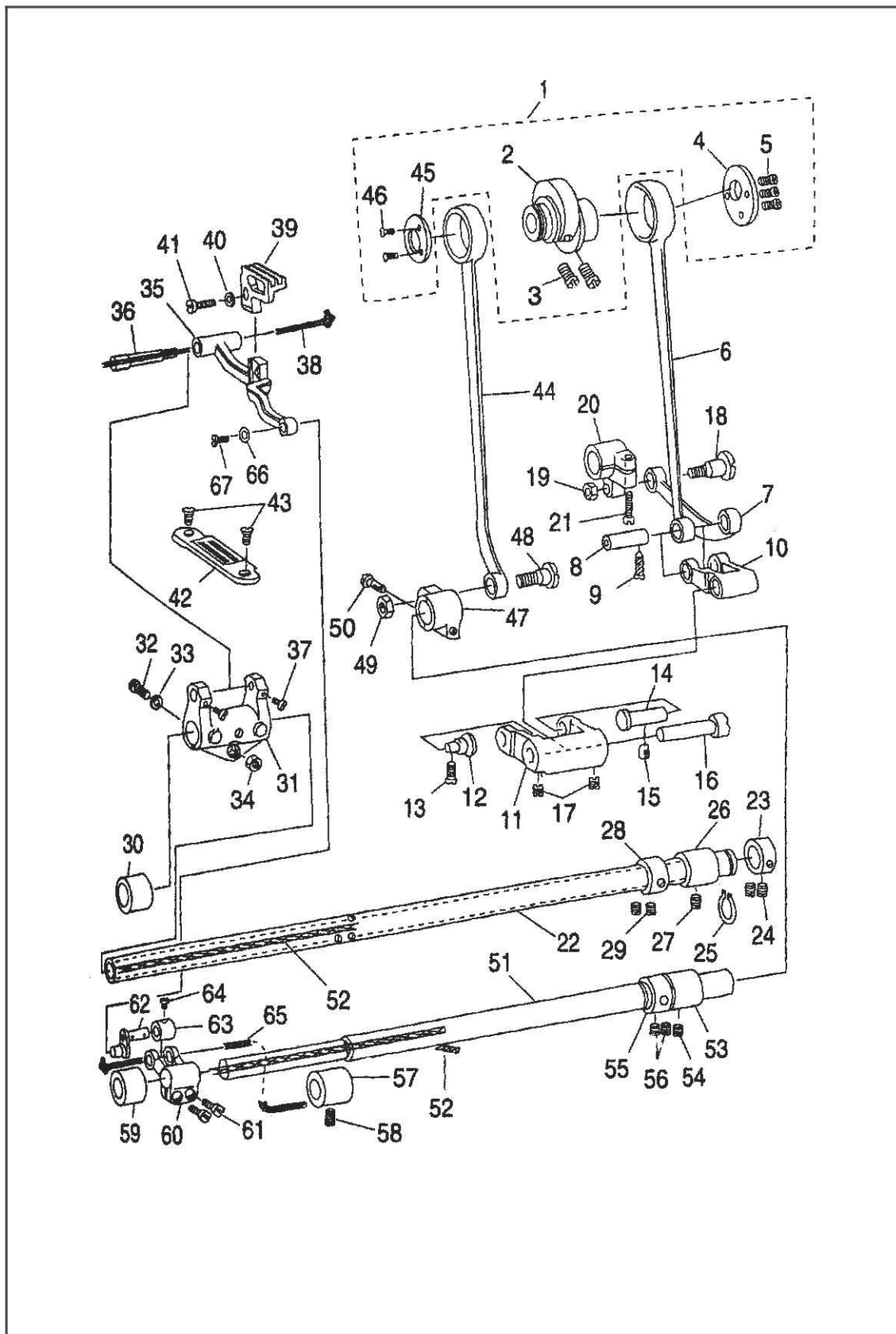
3. 压料分组件 Presser bar components



3. 压料分组件 Presser bar components

序号 Ref. No.	件号 Part No	名称 Description	数量 Arm.Req.
1	40-3-1	调压螺钉 Presser Spring Regulator	1
2	40-3-2	调压螺钉螺母 Nut	1
3	40-3-3	调压导杆 Presser Bar Guide Bar	1
4	40-3-4	调压簧 Presser Spring	1
5	40-3-5	压杆 Presser Bar	1
6	40-3-6	压杆导架 Presser Bar Guide Bracket Asm.	1
7	40-3-7	压杆导架螺钉 Screw	1
8	40-3-8	压杆衬套 Presser Bar Bushing, Lower	1
9	40-3-9	压杆油线 Oil Wick	1
10	40-3-10	压脚部件1/4" Presser Foot Asm.	1
11	40-3-11	压脚螺钉 Screw	1
12	40-3-12	切线刀 Thread Knife	1
13	40-3-13	切线刀导钩 Thread Knife Guide	1
14	40-3-14	切线刀导钩螺钉 Screw	1
15	40-3-15	压脚扳手 Hand Lifter	1
16	40-3-16	压脚扳手螺钉 Screw	1
17	40-3-17	压脚扳手垫圈 Washer	1
18	40-3-18	压脚提升凸轮 Hand Lifter Cam Asm.	1
19	40-3-19	压脚扳手轴O形圈 Rubber Ring	1
20	40-3-20	压脚升降板 Lifting Lever	1
21	40-3-21	升降板轴位螺钉 Hinge Screw	1
22	40-3-22	抬压脚前杠杆 Lifting Link For Lifting Lever	1
23	40-3-23	前杠杆轴位螺钉 Hinge Screw	1
24	40-3-24	前杠杆螺纹销 Hinge Pin	1
25	40-3-25	前杠杆螺纹销垫圈 Lifting Lever Gasket	1
26	40-3-26	前杠杆特制开口挡圈 Snap Ring	1
27	40-3-27	前杠杆开口挡圈 Snap Ring	1
28	40-3-28	抬压脚拉杆 Lifting Lever Connecting Rod	1
29	40-3-29	抬压脚拉杆螺钉 Screw	2
30	40-3-30	抬压脚拉杆开口挡圈 Snap Ring	2
31	40-3-31	抬压脚后杠杆 Lifting Lever Link Rear	1
32	40-3-32	后杠杆轴位螺钉 Hinge Screw	1
33	40-3-33	抬压脚顶杆接头 Swivel	1
34	40-3-34	抬压脚顶杆 Lifting Lever Connecting Rod, Vertical	1
35	40-3-35	抬压脚顶杆螺母 Nut	1

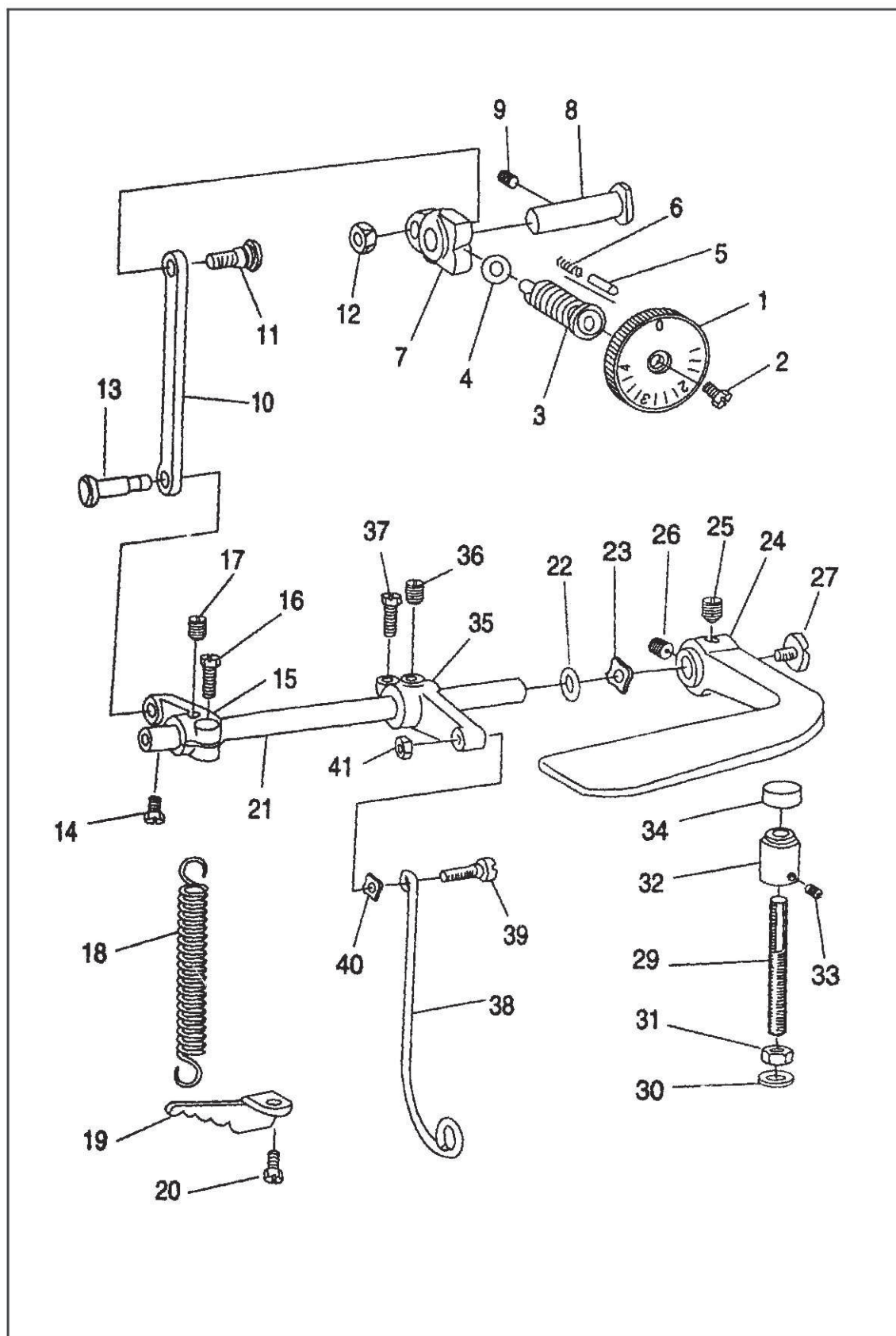
4. 送料分组件 Feed mechanism components



4. 送料分组件 Feed mechanism components

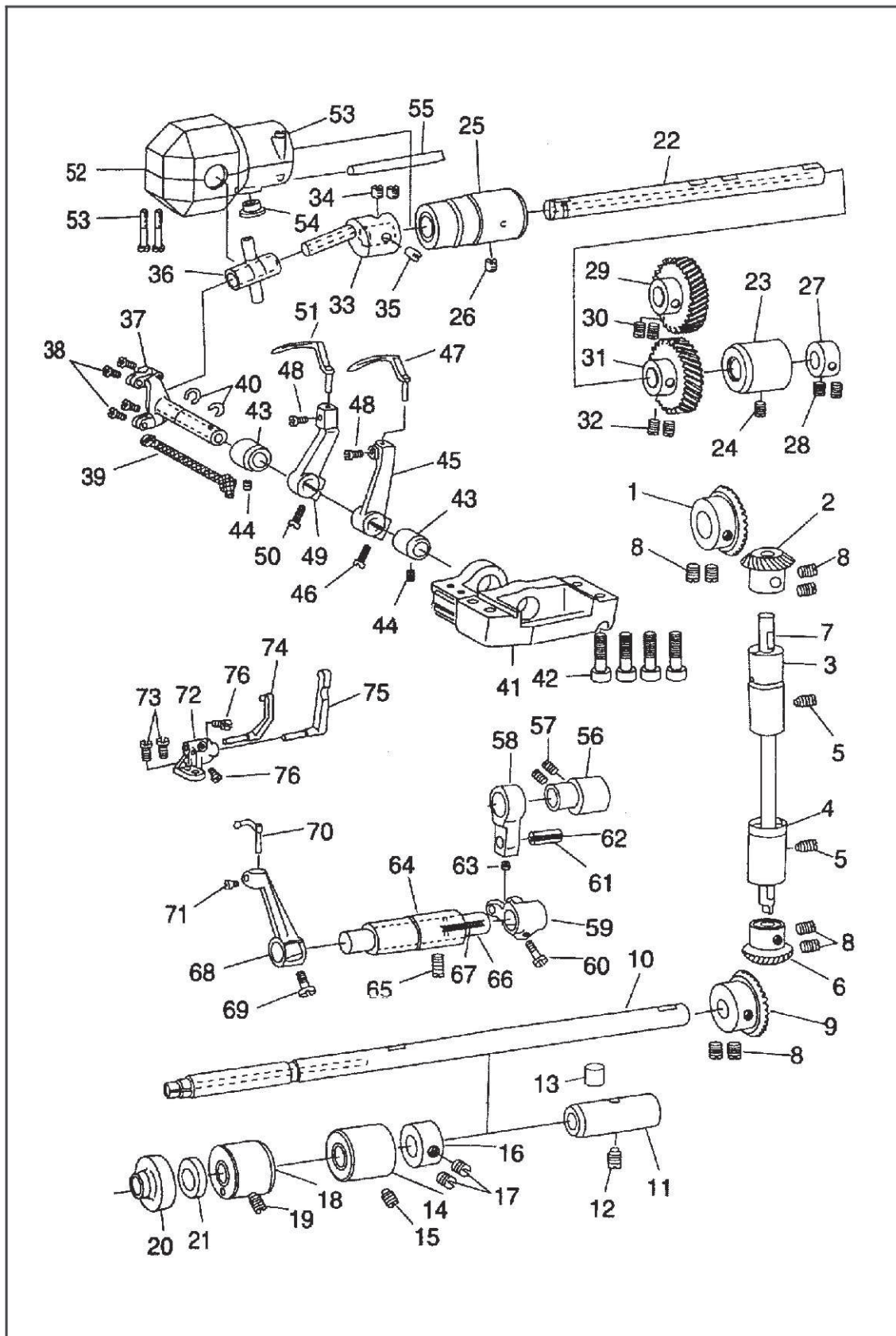
序号 Ref. No.	件号 Part No	名称 Description	数量 Arm. Req.	
1	40-4-1	送料偏心轮部件	Feed eccentric cam asm.	1
2	40-4-2	送料偏心轮	Feed eccentric cam	1
3	40-4-3	送料偏心轮螺钉	Screw	2
4	40-4-4	送料偏心轮盖板	Feed eccentric thrust washer	1
5	40-4-5	偏心轮盖板螺钉	Screw	3
6	40-4-6	送料大连杆	Feed rocker shaft connecting rod	1
7	40-4-7	送料小连杆	Connecting rod	1
8	40-4-8	送料连杆销	Connecting pin	1
9	40-4-9	送料连杆销螺钉	Screw	1
10	40-4-10	送料摇杆	Feed driving rocker asm.	1
11	40-4-11	送料摇杆座	Feed driving rocker	1
12	40-4-12	送料摆杆座左销	Hinge stud	1
13	40-4-13	送料摆杆座左销螺钉	Screw	1
14	40-4-14	送料摆杆座右销	Hinge pin	1
15	40-4-15	送料摆杆座右销螺钉	Screw	1
16	40-4-16	送料摆杆销	Hinge pin	1
17	40-4-17	送料摆杆销螺钉	Screw	1
18	40-4-18	送料曲柄轴位螺钉	Screw	2
19	40-4-19	送料曲柄轴位螺母	Hinge screw	1
20	40-4-20	送料曲柄	Nut	1
21	40-4-21	送料曲柄螺钉	Feed rocker shaft crank	1
22	40-4-22	送料轴	Screw	1
23	40-4-23	送料轴薄挡圈	Feed rocker shaft	1
24	40-4-24	送料轴薄挡圈螺钉	Thrust collar	1
25	40-4-25	送料轴后挡圈	Screw	2
26	40-4-26	送料轴后轴套	Retaining ring	1
27	40-4-27	送料轴后轴套螺钉	Bushing rear	1
28	40-4-28	送料轴后轴套螺母	Screw	1
29	40-4-29	送料轴前轴套	Thrust collar	1
30	40-4-30	牙架座	Screw	2
31	40-4-31	牙架座螺钉	Feed rocker shaft bushing, front	1
32	40-4-32	牙架座螺钉垫圈	Feed rocker	1
33	40-4-33	牙架座螺钉螺母	Screw	1
34	40-4-34	牙架	Washer	1
35	40-4-35	牙架销	Nut	1
36	40-4-36	牙架销螺钉	Feed bar	1
37	40-4-37	牙架销油线	Feed bar shaft	1
38	40-4-38	送料牙1/4"	Screw	2
39	40-4-39	送料牙轴圈	Oil wick	1
40	40-4-40	送料牙螺钉	Reed dog (1/4)	1
41	40-4-41	针板1/4"	Washer	1
42	40-4-42	针板螺钉	Screw	1
43	40-4-43	拾牙连杆	Throat plate (1/4)	1
44	40-4-44	拾牙连杆凸轴盖	Screw	2
45	40-4-45	拾牙连杆凸轴盖螺钉	Feed driving shaft connecting rod	1
46	40-4-46	拾牙后曲柄	Feed driving eccentric thrust washer	1
47	40-4-47	拾牙连杆轴位螺钉	Screw	2
48	40-4-48	拾牙连杆轴位螺母	Feed driving shaft crank rear	1
49	40-4-49	拾牙后曲柄紧固螺钉	Hinge screw	1
50	40-4-50	拾牙轴	Nut	1
51	40-4-51	拾牙轴油线	Screw	1
52	40-4-52	拾牙轴后轴套	Feed driving shaft	1
53	40-4-53	拾牙轴后轴套螺钉	Oil wick	2
54	40-4-54	拾牙轴后轴套挡圈	Bushing, rear	1
55	40-4-55	后轴套挡圈螺钉	Screw	1
56	40-4-56	拾牙轴中轴套	Thrust collar	1
57	40-4-57	拾牙轴中轴套螺钉	Screw	2
58	40-4-58	拾牙轴前轴套	Bushing, intermediate	1
59	40-4-59	拾牙轴前轴套螺钉	Screw	1
60	40-4-60	牙架连杆	Feed rocker shaft bushing, front	1
61	40-4-61	牙架连杆挡圈	Feed rocker shaft crank	1
62	40-4-62	牙架连杆油线	Screw	2
63	40-4-63	牙架连杆油线	Feed bar link	1
64	40-4-64	牙架连杆准孔垫圈	Thrust collar	1
65	40-4-65	针板1/8"	Screw	1
66	40-4-66	针板3/32"	Oil wick	1
67	40-4-67	针板3/16"	Counter-sunk washer	1
			Screw	1

5. 送料调节分组件 Feed regulating components



序号 Ref. No.	件号 Part No	名称 Description	数量 Arm.Req.
1	40-5-1	送料距旋钮部件 Stitch dial asm.	1
2	40-5-2	送料距旋钮螺钉 Screw	1
3	40-5-3	送料调节螺柱 Feed regulating screw	1
4	40-5-4	送料调节螺柱O形圈 O-Rubber ring	1
5	40-5-5	送料距锁合销 Stitch dial lock pin	1
6	40-5-6	送料距锁合销簧 Stitch dial lock spring	1
7	40-5-7	送料调节器 Feed regulator	1
8	40-5-8	送料调节器销 Hinge pin	1
9	40-5-9	送料调节器销螺钉 Screw	1
10	40-5-10	送料调节器连杆 Feed regulator connecting rod	1
11	40-5-11	调节器连杆轴位螺钉 Hinge screw	1
12	40-5-12	调节器连杆轴位螺母 Nut	1
13	40-5-13	拉簧调节曲柄销 Tension spring suspension stud	1
14	40-5-14	拉簧调节曲柄销螺钉 Screw	1
15	40-5-15	拉簧调节曲柄 Tension spring suspension crank	1
16	40-5-16	调节曲柄紧固螺钉 Clamp screw	1
17	40-5-17	调节曲柄定位螺钉 Screw	1
18	40-5-18	倒送料轴拉簧 Tension spring	1
19	40-5-19	拉簧固定板 Suspension bracket	1
20	40-5-20	拉簧固定板螺钉 Screw	1
21	40-5-21	倒送料轴 Reverse feed control lever shaft	1
22	40-5-22	倒送料轴O形圈 Rubber ring, large	1
23	40-5-23	倒送料轴弹性垫圈 Waved washer	1
24	40-5-24	倒送料扳手 Reverse feed control lever	1
25	40-5-25	倒送料扳手定位螺钉 Screw	1
26	40-5-26	倒送料扳手螺钉 Screw	1
27	40-5-27	倒送料轴端螺钉 End screw	1
29	40-5-28	倒送料挡块螺杆 Screw	1
30	40-5-29	挡块螺杆垫圈 Washer	1
31	40-5-30	挡块螺杆螺母 Nut	1
32	40-5-31	倒送料挡块 Lever stopper	1
33	40-5-32	倒送料挡块螺钉 Screw	1
34	40-5-33	倒送料挡块橡胶垫 Rubber cushion	1
35	40-5-34	倒送料曲柄 Control lever crank, rear	1
36	40-5-35	倒送料曲柄定位螺钉 Screw	1
37	40-5-36	倒送料曲柄螺钉 Screw	1
38	40-5-37	倒送料连杆 Feed driving rocker arm connecting	1
39	40-5-38	倒送料连杆轴位螺钉 Screw	1
40	40-5-39	倒送料连杆轴位垫圈 Washer	1
41	40-5-40	倒送料连杆轴位螺母 Nut	1

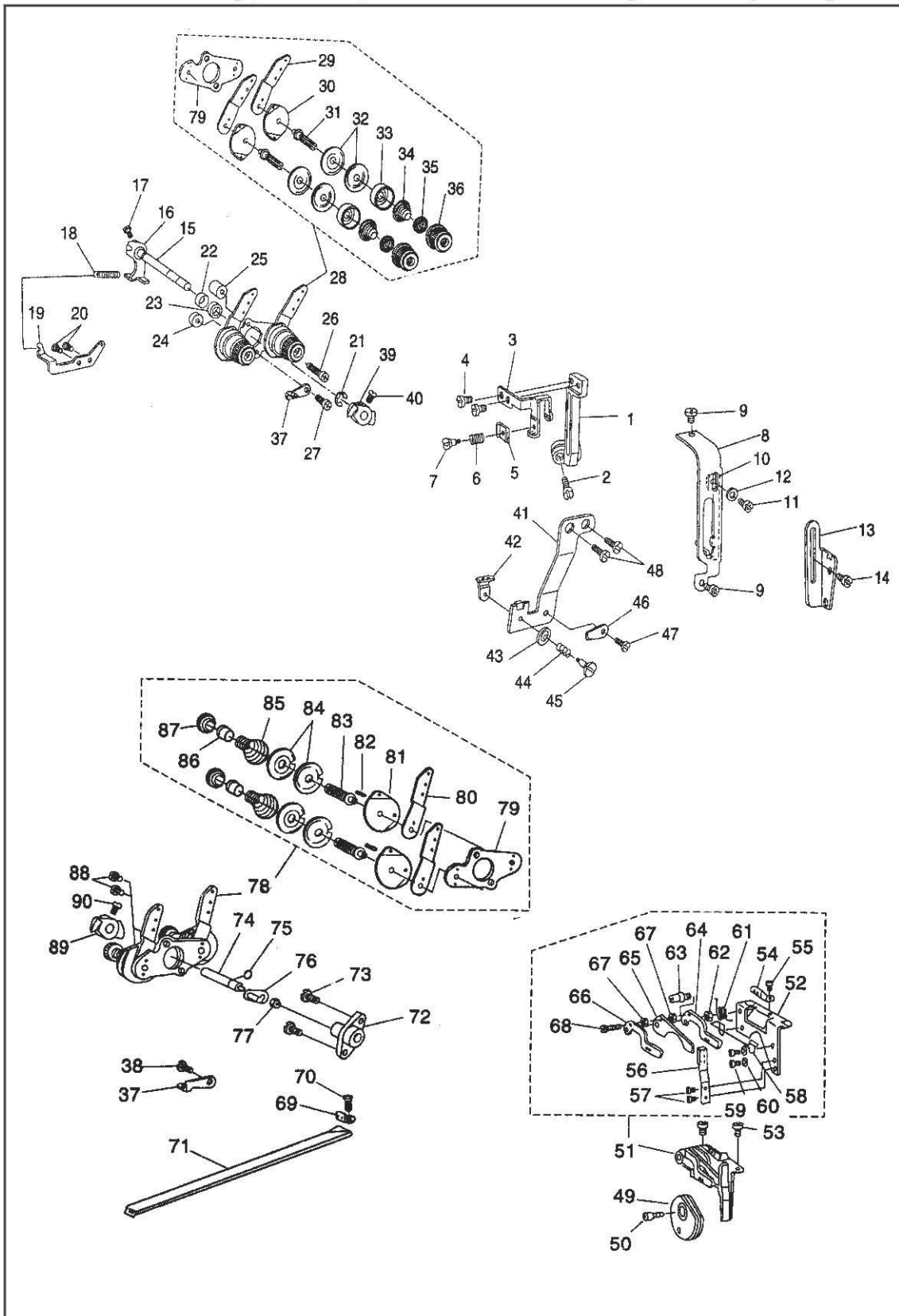
6. 弯针勾线分组件 Looper thread retainer components



序号 Ref. No.	件号 Part No	名称 Description	数量 Arm.Req.
1	40-6-1	下轴伞齿轮	1
2	40-6-2	竖轴上伞齿轮	1
3	40-6-3	竖轴上轴套	1
4	40-6-4	竖轴下轴套部件	1
5	40-6-5	竖轴轴套螺钉	2
6	40-6-6	竖轴下伞齿轮	1
7	40-6-7	竖轴	1
8	40-6-8	伞齿轮螺钉	8
9	40-6-9	下轴伞齿轮	1
10	40-6-10	下轴	1
11	40-6-11	下轴后轴套	1
12	40-6-12	下轴后轴套螺钉	1
13	40-6-13	下轴后轴套油杯	1
14	40-6-14	下轴中轴套部件	1
15	40-6-15	下轴中轴套螺钉	1
16	40-6-16	下轴挡圈	1
17	40-6-17	下轴挡圈螺钉	2
18	40-6-18	下轴轴套部件	1
19	40-6-19	下轴轴套螺钉	1
20	40-6-20	下轴前轴套油封套	1
21	40-6-21	下轴前轴套油封	1
22	40-6-22	弯针轴	1
23	40-6-23	弯针轴后轴套部件	1
24	40-6-24	弯针轴轴套螺钉	1
25	40-6-25	弯针轴前轴套部件	1
26	40-6-26	弯针轴前轴套螺钉	1
27	40-6-27	弯针轴挡圈	1
28	40-6-28	弯针轴挡圈螺钉	1
29	40-6-29	主动弯针齿轮	2
30	40-6-30	主动弯针齿轮螺钉	2
31	40-6-31	被动弯针齿轮	1
32	40-6-32	被动弯针齿轮螺钉	2
33	40-6-33	弯针曲柄	1
34	40-6-34	弯针曲柄螺钉	2
35	40-6-35	弯针曲柄调节螺钉	1
36	40-6-36	弯针十字接头部件	1
37	40-6-37	弯针摆轴部件	1
38	40-6-38	弯针摆轴螺钉	4
39	40-6-39	弯针摆轴油线	1
40	40-6-40	弯针摆轴挡圈	2
41	40-6-41	弯针架座	1
42	40-6-42	弯针架座螺钉	4
43	40-6-43	弯针摆轴轴套	2
44	40-6-44	弯针摆轴轴套螺钉	2
45	40-6-45	左弯针托柄	1
46	40-6-46	左弯针托柄螺钉	1
47	40-6-47	左弯针	1
48	40-6-48	弯针螺钉	2
49	40-6-49	右弯针托柄	1
50	40-6-50	右弯针托柄螺钉	1
51	40-6-51	右弯针	1
52	40-6-52	弯针曲柄罩壳部件	1
53	40-6-53	曲柄罩壳螺钉	3
54	40-6-54	曲柄罩壳孔塞	1
55	40-6-55	曲柄罩壳待油管	1
56	40-6-56	护针凸轮	1
57	40-6-57	护针凸轮螺钉	2
58	40-6-58	护针连杆	1
59	40-6-59	护针叉形曲柄	1
60	40-6-60	护针叉形曲柄螺钉	1
61	40-6-61	护针止柄销	1
62	40-6-62	护针止柄油线	1
63	40-6-63	护针止柄螺钉	1
64	40-6-64	护针轴套	1
65	40-6-65	护针轴套螺钉	1
66	40-6-66	护针轴	1
67	40-6-67	护针油线	1
68	40-6-68	护针曲柄	1
69	40-6-69	护针曲柄螺钉	1
70	40-6-70	摆动护针(1/4")	1
71	40-6-71	摆动护针杆螺钉	1
72	40-6-72	护针杆座	1
73	40-6-73	护针杆座螺钉	2
74	40-6-74	左固定护针杆	1
75	40-6-75	右固定护针杆	1
76	40-6-76	左右固定护针杆螺钉	2

7. 挑线、松线、夹线分组件

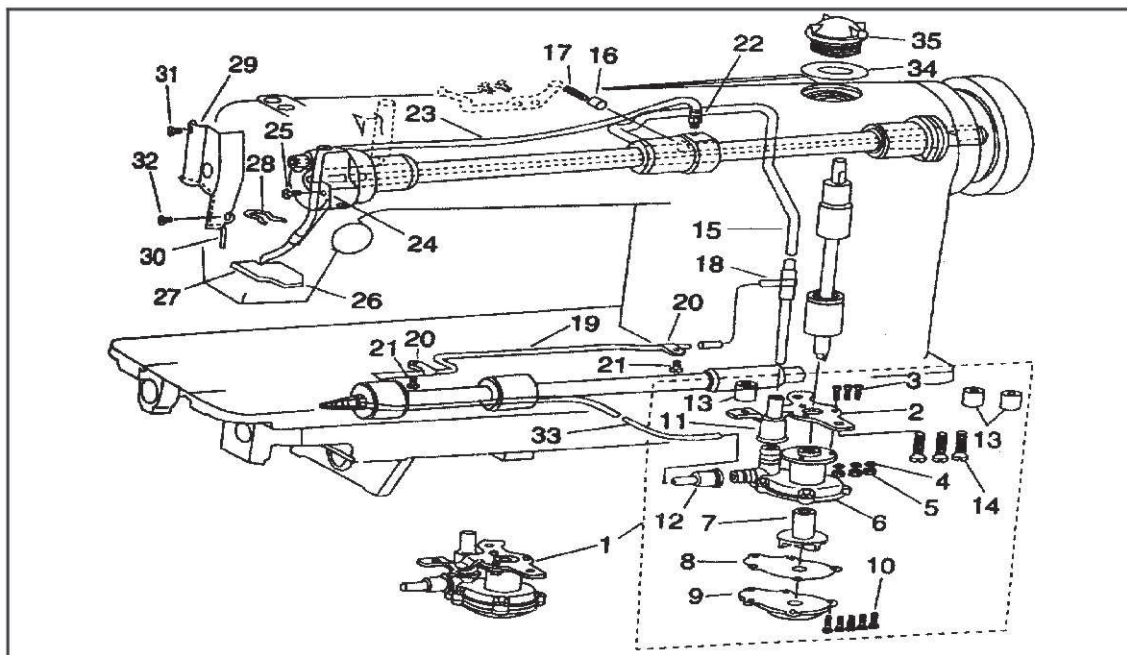
Thread take-up, tension, and tension releasing assembly complete



序号 Ref. No.	件号 Part No	名称 Description	数量 Arm.Req.
1	40-7-1	挑线连杆 Thread take-up lever	1
2	40-7-2	挑线连杆螺钉 Screw	1
3	40-7-3	挑线杆 Thread take-up	1
4	40-7-4	挑线杆紧固螺钉 Screw	2
5	40-7-5	挑线杆夹线板 Tension plate	1
6	40-7-6	挑线杆夹线簧 Tension spring	1
7	40-7-7	挑线杆夹线板轴螺钉 Screw	1
8	40-7-8	挑线杆护罩 Thread take-up lever guard	1
9	40-7-9	挑线杆护罩螺钉 Screw	2
10	40-7-10	线量调节板 Take-up thread tension lever	1
11	40-7-11	线量调节板螺钉 Screw	1
12	40-7-12	调节板螺钉垫圈 Washer	1
13	40-7-13	中间导线钩 Frame thread eyelet	1
14	40-7-14	中间导线钩螺钉 Screw	1
15	40-7-15	松线轴 Tension release shaft	1
16	40-7-16	面线松线曲柄部件 Tension release arm asm.	1
17	40-7-17	面线松线曲柄螺钉 Screw	1
18	40-7-18	抬压脚后杠杆弹簧 Spring	1
19	40-7-19	后杠杆弹簧固定板 Suspension bracket	1
20	40-7-20	后杠杆弹簧固定板螺钉 Screw	2
21	40-7-21	松线轴挡圈 Snap ring	1
22	40-7-22	松线轴油封 Oil seal ring	1
23	40-7-23	松线轴环 Tension release shaft spacer	1
24	40-7-24	夹线器下安装垫 Spacer (A) for installing plate	1
25	40-7-25	夹线器上安装垫 Spacer (B) for installing plate	1
26	40-7-26	夹线器上安装垫螺钉 Screw	1
27	40-7-27	夹线器下安装垫螺钉 Screw	1
28	40-7-28	面线夹线器部件 Needle thread tension asm.	(1)
29	40-7-29	面线单面导线板 Needle thread tension guide plate	2
30	40-7-30	面线双面导线板 Tension thread guide	2
31	40-7-31	夹线螺钉 Looper thread tension post	2
32	40-7-32	面线夹线板 Tension disc	4
33	40-7-33	面线松线座 Tension disc presser tube	2
34	40-7-34	面线夹线簧 Tension spring	2
35	40-7-35	面线止动板 Tension disc stopper	2
36	40-7-36	面线夹线螺母部件 Tension nut	2
37	40-7-37	导线钩 Frame thread guide	2
38	40-7-38	导线钩螺钉 Screw	1
39	40-7-39	面线松线爪 Tension release latch	1
40	40-7-40	面线松线爪螺钉 Screw	1
41	40-7-41	过线板架 Tension controller installing plate	1
42	40-7-42	过线板 Take-up thread guide	1
43	40-7-43	过线夹线板 Attachment installing plate	1
44	40-7-44	过线夹线簧 Take-up thread tension spring	1
45	40-7-45	过线夹线螺钉 Take-up thread tension port	1

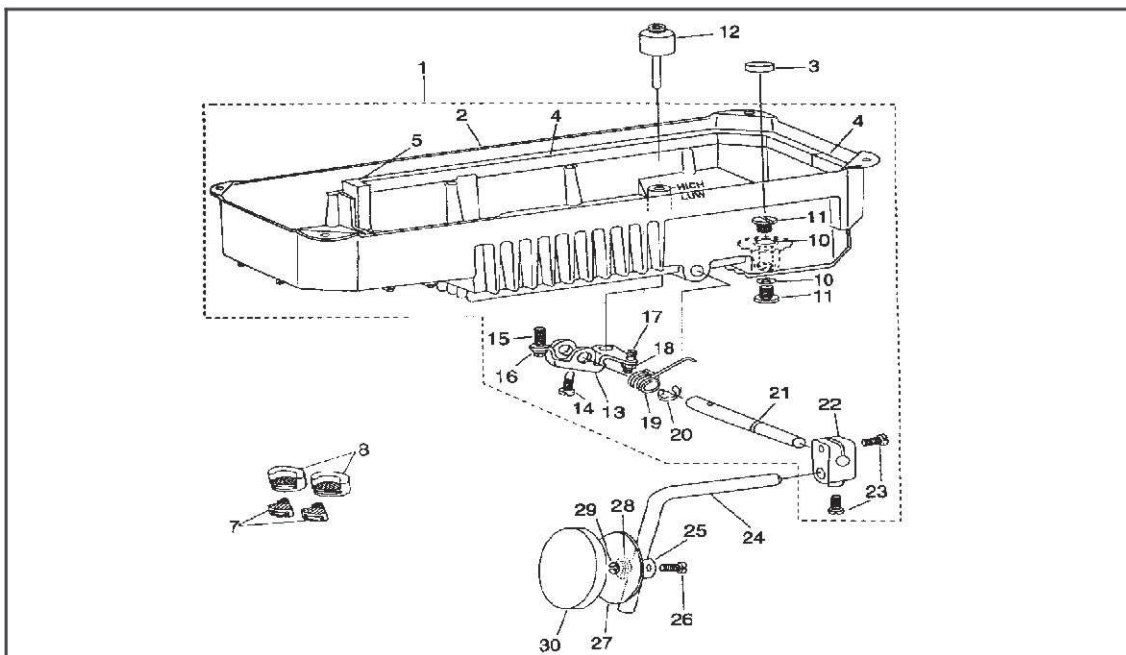
序号 Ref. No.	件号 Part No	名称 Description	数量 Arm.Req.	
46	40-7-46	松线板	Thread tension release guide latch	1
47	40-7-47	松线板螺钉	Screw	1
48	40-7-48	过线板螺钉	Screw	2
49	40-7-49	底线打线凸轮	Looper thread take-up cam	1
50	40-7-50	底线打线凸轮定位螺钉	Screw	1
51	40-7-51	凸轮导线钩部件	Looper thread guide asm.	1
52	40-7-52	凸轮导线架	Thread guide plate	1
53	40-7-53	凸轮导线架螺钉	Screw	2
54	40-7-54	底线双线导线钩	Looper thread guide	1
55	40-7-55	底线双线导线钩螺钉	Screw	1
56	40-7-56	底线导线止动簧	Thread guide stopper spring	1
57	40-7-57	底线导线止动簧螺钉	Screw	2
58	40-7-58	底线脱线钢丝	Cast-off wire	1
59	40-7-59	底线脱线钢丝螺钉	Screw	2
60	40-7-60	底线脱线钢丝螺钉垫圈	Washer	2
61	40-7-61	底线导线簧	Thread guide spring	1
62	40-7-62	凸轮过线螺钉螺母	Nut	1
63	40-7-63	凸轮过线螺钉	Thread guide stud	1
64	40-7-64	凸轮导线钩(右)	Looper thread guide, right	1
65	40-7-65	凸轮脱线爪	Cast-off plate	1
66	40-7-66	凸轮导线钩(左)	Looper thread guide, left	1
67	40-7-67	凸轮导线环	Collar	2
68	40-7-68	凸轮导线钩螺钉	Screw	1
69	40-7-69	底线导线钩	Looper thread guide	1
70	40-7-70	底线导线钩螺钉	Screw	1
71	40-7-71	底线导线管	Looper thread guide tube	1
72	40-7-72	松线轴套	Tension release shaft bushing	1
73	40-7-73	松线轴套螺钉	Screw	2
74	40-7-74	底线松线轴	Looper thread release shaft	1
75	40-7-75	底线松线轴O型圈	Rubber ring	1
76	40-7-76	底线松线轴曲柄部件	Tension release arm asm.	1
77	40-7-77	底线松线轴螺母	Nut	1
78	40-7-78	底线夹线器部件	Lower thread tension asm.	(1)
79	40-7-79	夹线器安装板	Tension installing plate	2
80	40-7-80	底线单面导线板	Looper thread tension control plate	2
81	40-7-81	底线双面导线板	Thread guide	2
82	40-7-82	底线夹线板止动销	Spring pin	2
83	40-7-83	夹线螺钉	Looper thread tension post	2
84	40-7-84	底线夹线板	Tension disc	4
85	40-7-85	底线夹线簧	Looper thread tension spring	2
86	40-7-86	底线夹线止转圈	Tension spring bushing	2
87	40-7-87	底线夹线螺母	Tension post nut	2
88	40-7-88	夹线器安装板螺钉	Screw	2
89	40-7-89	底线松线爪	Looper thread release latch	1
90	40-7-90	底线松线爪螺钉	Screw	1

8. 润滑分组件 Lubrication



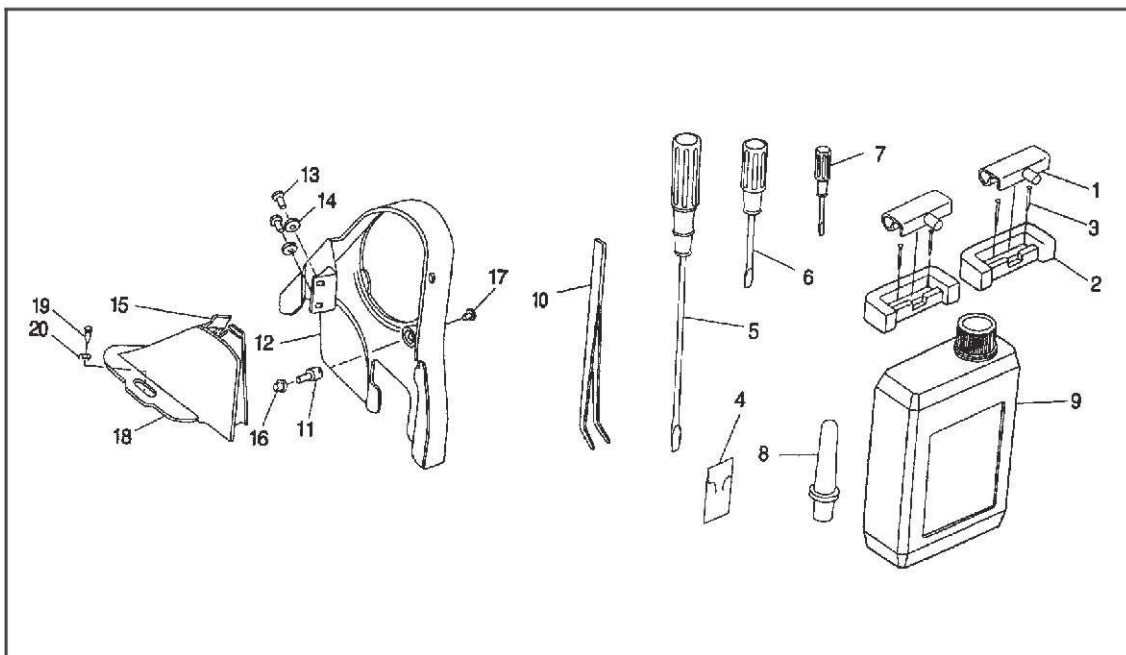
序号 Ref. No.	件号 Part No	名称 Description	数量 Arm. Req.
1	40-8-1	油泵部件 Lubricating oil pump asm.	(1)
2	40-8-2	油泵安装板 Oil pump installing base	1
3	40-8-3	油泵安装螺钉 Screw	3
4	40-8-4	油泵安装垫圈 Washer	3
5	40-8-5	油泵安装螺母 Nut	3
6	40-8-6	油泵体 Lubricating oil	1
7	40-8-7	油泵叶轮 Oil pump impeller	1
8	40-8-8	油泵叶轮托板 Oil pump impeller cover	1
9	40-8-9	油泵盖部件 Lubricating oil pump cover	1
10	40-8-10	油泵盖螺钉 Screw	5
11	40-8-11	上轴供油管接头 Rubber joint	1
12	40-8-12	下轴供油管接头 Rubber joint	1
13	40-8-13	油泵垫圈 Collar	3
14	40-8-14	油泵螺钉 Screw	3
15	40-8-15	上轴供油管 Main shaft oil tube	1
16	40-8-16	回油泵柱塞 Oil return pump plunger	1
17	40-8-17	柱塞簧 Plunger spring	1
18	40-8-18	齿轮供油管橡皮接头 Oil sight window base	1
19	40-8-19	齿轮供油管 Gear oil pipe	1
20	40-8-20	齿轮供油管夹 Holder	2
21	40-8-21	齿轮供油管夹螺钉 Screw	2
22	40-8-22	面部回油管连接螺钉 Connecting screw	1
23	40-8-23	回油管 Oil return tube asm.	1
24	40-8-24	回油管夹 Oil return tube holder	1
25	40-8-25	回油管夹螺钉 Screw	1
26	40-8-26	回油除尘毡 Oil felt presser	1
27	40-8-27	回油毡 Oil felt	1
28	40-8-28	回油毡夹 Oil felt presser	1
29	40-8-29	面部挡油板 Arm oil shield	1
30	40-8-30	面部挡油板油线 Oil wick	1
31	40-8-31	面部挡油板上螺钉 Screw	1
32	40-8-32	面部挡油板下螺钉 Screw	1
33	40-8-33	下轴供油管 Oil tube	1
34	40-8-34	油窗O形圈 O-Rubber ring	1
35	40-8-35	油窗 Oil sight window	1

9. 油盘、膝抬压脚分组件 Oil reservoir & knee lifter components



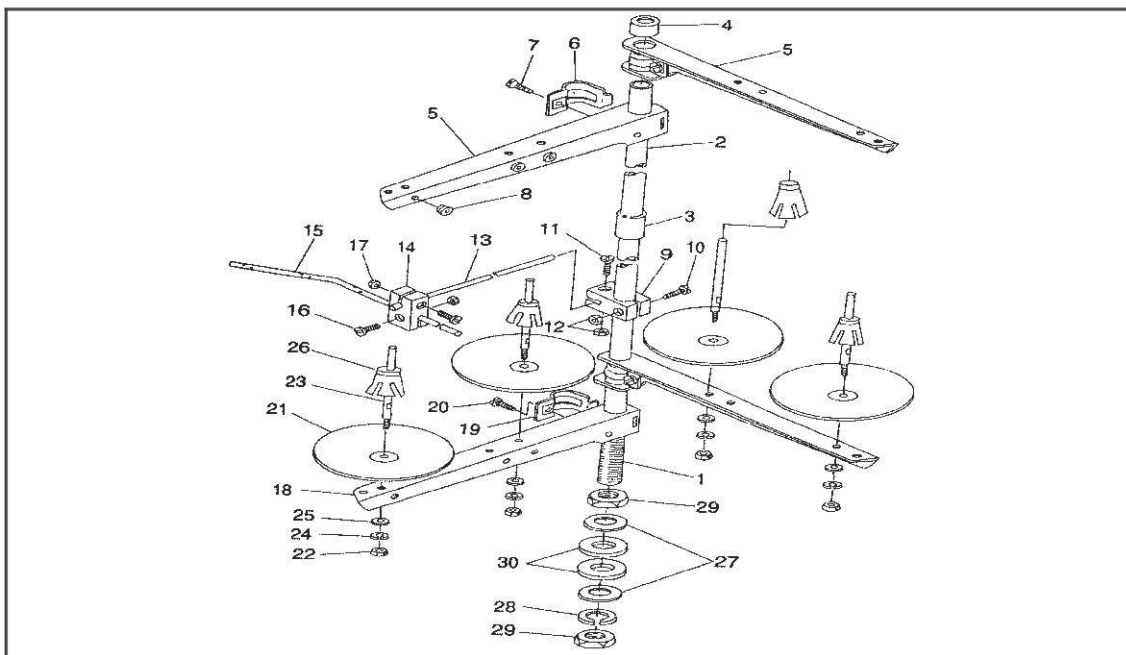
序号 Ref. No.	件号 Part No	名称 Description	数量 Arm.Req.
1	40-9-1	油盘部件 Oil reservoir asm.	(1)
2	40-9-2	油盘 Oil reservoir	1
3	40-9-3	油盘磁铁 Oil reservoir magnet	1
4	40-9-4	油盘侧面垫 Gasket	2
5	40-9-5	油盘端面垫 Gasket	1
7	40-9-6	油盘座垫 Oil reservoir felt cushion	2
8	40-9-7	油盘支座 Oil reservoir rubber cushion	2
10	40-9-8	排油螺钉O形圈 Oil drain cap gasket	2
11	40-9-9	排油螺钉 Oil drain screw	2
12	40-9-10	抬压脚顶销 Knee press lifter rod	1
13	40-9-11	抬压脚双向曲柄 Lifting	1
14	40-9-12	双向曲柄螺钉 Positioning screw	1
15	40-9-13	双向曲柄限位螺钉 Positioning screw	1
16	40-9-14	双向曲柄限位螺母 Nut	1
17	40-9-15	双向曲柄调节螺钉 Positioning screw	1
18	40-9-16	双向曲柄调节螺母 Nut	1
19	40-9-17	双向曲柄扭簧 Spring	1
20	40-9-18	抬压脚轴开口挡圈 Thrust ring	1
21	40-9-19	抬压脚轴 Knee press rod	1
22	40-9-20	抬压脚操纵杆节头 Bearing bracket	1
23	40-9-21	操纵杆节头螺钉 Clamp screw	2
24	40-9-22	操纵杆 Knee lifter plate rod	1
25	40-9-23	操纵板节头 Knee press plate cover joint	1
26	40-9-24	操纵板节头螺钉 Screw	1
27	40-9-25	操纵板 Knee press plate	1
28	40-9-26	操纵板簧 Knee press plate spring	1
29	40-9-27	操纵板螺钉 Screw	1
30	40-9-28	操纵板软垫 Knee press plate cover	1

10. 机头附件 Machine head accessories



序号 Ref. No.	件号 Part No	名称 Description	数量 Arm. Req.
1	40-10-1	机头连接钩部件 Machine hinge plate asm.	2
2	40-10-2	机头连接钩座 Machine hinge plate	2
3	40-10-3	机头连接钩座钉 Nail	4
4	40-10-4	机针 Needle	1包
5	40-10-5	螺丝刀(大) Screw driver (L)	1
6	40-10-6	螺丝刀(中) Screw driver (M)	1
7	40-10-7	螺丝刀(小) Screw driver (S)	1
8	40-10-8	机头支柱 Machine rest pin	1
9	40-10-9	油箱部件 Lubricating unit case asm.	1
10	40-10-10	镊子 Tweezer	1
11	40-10-11	罩壳支柱 Belt cover support stud	1
12	40-10-12	上轮前罩壳 Belt-cover A	1
13	40-10-13	罩壳螺钉 Screw	2
14	40-10-14	罩壳螺钉垫圈 Washer	2
15	40-10-15	后罩壳盖 Belt-cover b cover asm.	1
16	40-10-16	罩壳支柱螺母 Nut	1
17	40-10-17	前罩壳紧固螺钉 Screw	1
18	40-10-18	上轮后罩壳 Belt-cover B	1
19	40-10-19	传动带罩壳木螺钉 Driving belt cover wood screw	2
20	40-10-20	罩壳木螺钉垫圈 Wood screw washer	2

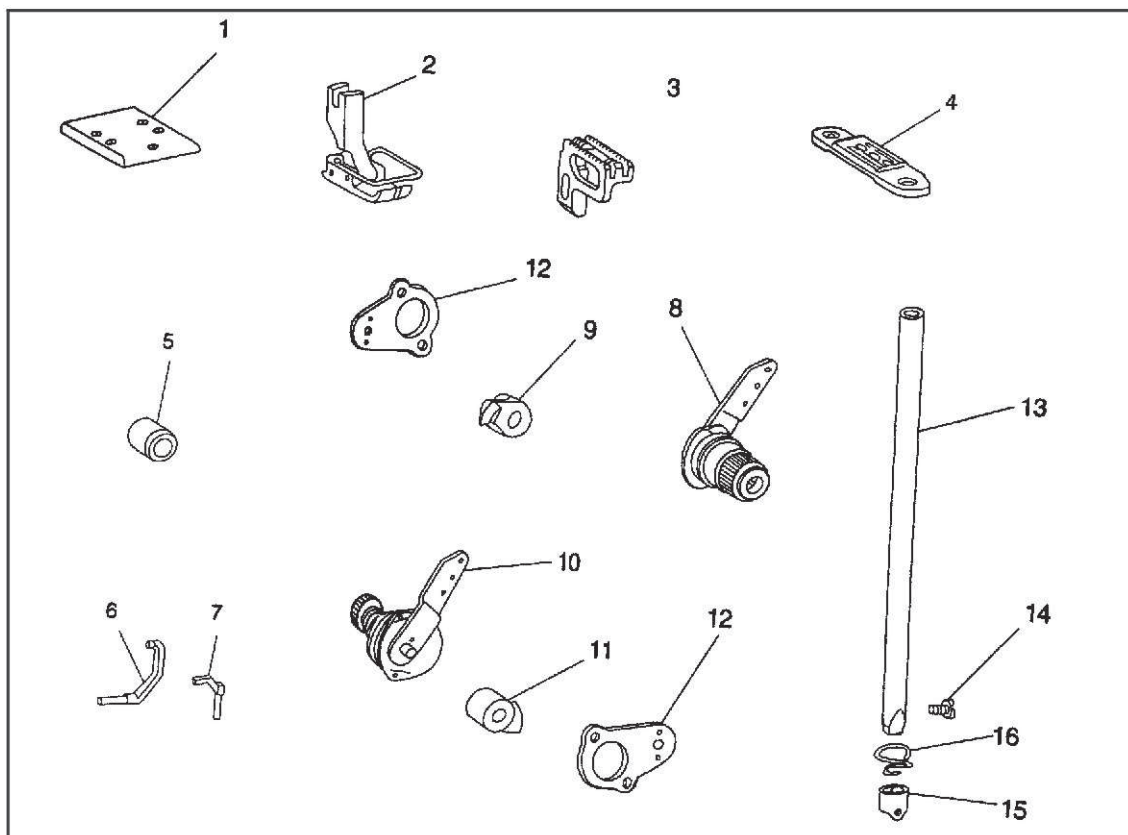
11. 四线团架分组件 Quadruple-thread spool stand asm.



序号 Ref. No.	件号 Part No	名称 Description	数量 Arm. Req.
1	40-11-1	线架杆下节 Spool rest rod (upper)	1
2	40-11-2	线架杆上节 Spool rest rod (lower)	1
3	40-11-3	线架杆接头 Spool rested joint	1
4	40-11-4	线架杆预防护橡皮 Spool rest rod rubber cap	1
5	40-11-5	线架过线杆 Thread guide asm.	2*
6	40-11-6	线架过线夹 Thread guide asm joint	2*
7	40-11-7	线架过线夹螺钉 Screw	2*
8	40-11-8	导线圈 Thread guide ring	6**
9	40-11-9	线架导线杆夹 Thread guide arm holder	1
10	40-11-10	线架导线杆夹螺钉(A) Screw	1
11	40-11-11	线架导线杆夹螺钉(B) Screw	1
12	40-11-12	线架导线杆夹螺母 Nut	2
13	40-11-13	线架导线杆 Thread guide arm	1
14	40-11-14	线架导线杆过线夹 Thread guide arm holder	1
15	40-11-15	线架导线杆过线 Lower thread guide	1
16	40-11-16	线架导线杆过线夹螺钉 Screw	2
17	40-11-17	线架导线杆过线夹螺母 Nut	2
18	40-11-18	线盘架 Spool rest arm.	2*
19	40-11-19	线盘架夹 Thread guide arm joint	2*
20	40-11-20	线盘架夹螺钉 Screw	2*
21	40-11-21	线盘 Spool rest	4***
22	40-11-22	线盘钉螺母 Nut	4***
23	40-11-23	线盘钉 Spool pin	4***
24	40-11-24	线盘钉弹簧垫圈 Spring washer	4***
25	40-11-25	线盘钉垫圈 Washer	4***
26	40-11-26	线团防松垫 Spool cushion	4
27	40-11-27	线架杆紧固螺母垫圈 Washer	2
28	40-11-28	紧固螺母弹簧垫圈 Spring washer	1
29	40-11-29	线架杆紧固螺母 Nut	2
30	40-11-30	线架杆防震橡皮圈 Rubber washer	2

注：单针链缝机配二线团线架，三针链缝机配六线团线架 - 31 -


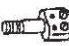



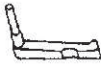
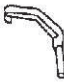
12. 单针链缝机与双针相对应更换之零件 Model one-needle high speed chainstitcher



序号 Ref. No.	件号 Part No	名称 Description	数量 Arm. Req.
1	40-12-1	附件安装板 Attachment installing plate	1
2	40-12-2	压脚部件 Presser foot asm.	1
3	40-12-3	送料牙 Feed dog	1
4	40-12-4	针板 Throat plate	1
5	40-12-5	弯针曲柄挡圈 Throat collar	1
6	40-12-6	摆动护针杆 Driving needle guard	1
7	40-12-7	固定护针杆 Counter needle guard	1
8	40-12-8	面线夹线器部件 Needle thread tension asm.	1
9	40-12-9	面线松线爪 Tension release latch	1
10	40-12-10	底线夹线器部件 Lower thread tension asm.	1
11	40-12-11	底线松线爪 Looper thread release latch	1
12	40-12-12	夹线器安装板 Tension installing plate	2
13	40-12-13	针杆 Needle bar	1
14	40-12-14	支针螺钉 Screw	1
15	40-12-15	针杆线钩 Needle bar thread guide	1
16	40-12-16	针杆下衬套线钩 Thread guide	1





双针双列与双针单列对应零件变化表 List of parts change

双针双列 Two-needle double-row chain stitch:

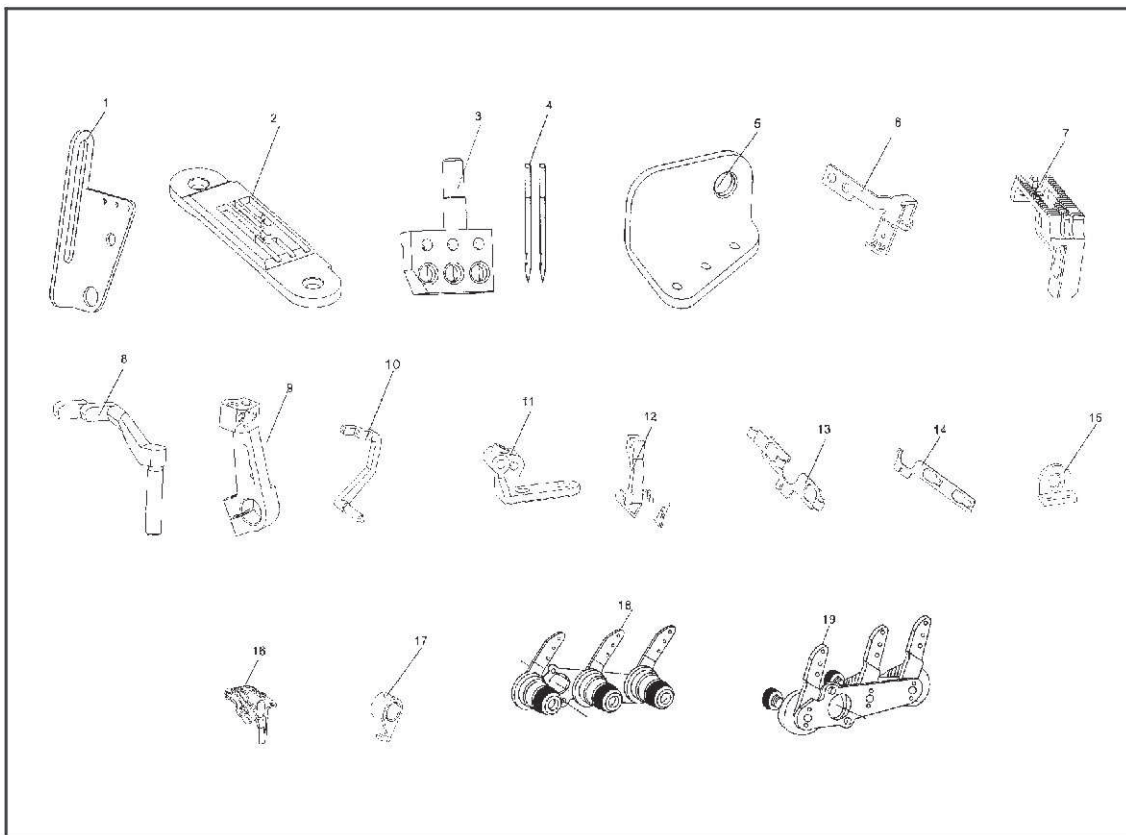
名称 Name	规格 Specifications	针板 Throat plate	针夹 Needles clamp	压脚 Presser foot asm.	送料牙 Feed dog	摆动护针杆 Rear moving needle guard	右固定护针杆 Right fix needle guard	左固定护针杆 Left needle guard
								
*1	1/8"(3.2mm)	40-4-68	40-2-38	40-3-36	40-4-76	40-6-71	40-6-75	40-6-74
2	5/32"(4.0mm)	40-4-69	40-2-39	40-3-37	40-4-77			
3	3/16"(4.8mm)	40-4-70	40-2-40	40-3-38				
4	7/32"(5.6mm)	40-4-71	40-2-41	40-3-39		40-6-70		
5	1/4"(6.4mm)	40-4-42	40-2-35	40-3-10				
6	5/16"(7.9mm)	40-4-72	40-2-42	40-3-40	40-4-78	40-6-72		
7	3/8"(9.5mm)	40-4-73	40-2-43	40-3-41	40-4-79			
8	1/2"(12.7mm)	40-4-74	40-2-44	40-3-42	40-4-80	40-6-73		
双针单列 Two-needle double-line chain stitch:								
9	0	40-4-75	40-2-45	40-3-43	40-4-81	40-6-74		40-6-77

双针双列、双针单列附件一览表 List throat of & its accessories

双针双列 Two-needle double-row chain stitch

规格 Specifications	名称 Name	右弯针 Right looper	左弯针 Left looper	推板 Bed slide	凸轮盖 Cam cover	卷边器 Folder
	*1	1/8"(3.2mm)				
2	5/32"(4.0mm)					40-1-47
3	3/16"(4.8mm)				40-1-18	40-1-48
4	7/32"(5.6mm)			40-1-25		40-1-49
5	1/4"(6.4mm)	40-6-51	40-6-47			40-1-50
6	5/16"(7.9mm)					40-1-44
7	3/8"(9.5mm)				40-1-49	40-1-51
8	1/2"(12.7mm)			40-1-47	40-1-50	40-1-52
双针单列 Two-needle double-line chain stitch						
9	0	40-6-78	40-6-79	40-1-48	40-1-51	

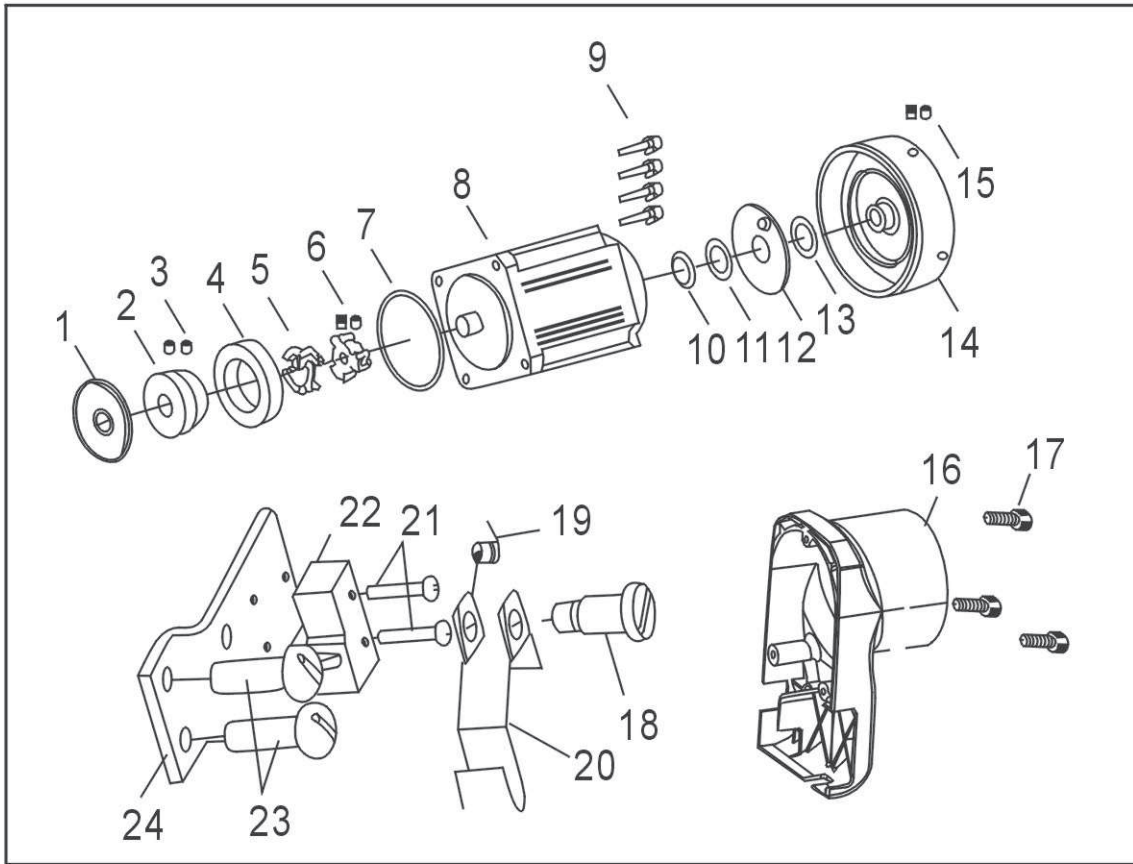
15. 三针链缝机与双针相对应更换之零件 Model three-needle high speed chainstitcher



序号 Ref. No.	件号 Part No	名称 Description	数量 Arm.Req.
1	48-1-1	中间导线钩 Frame Thread Evelet	1
2	48-1-2	针板 Throat Plate	1
3	48-2-1	针夹 Needle Clamp(1/4")	1
4	48-2-2	机针18# Needle 18#	1
5	48-2-3	针线过线架 Frame Thread Guide, Needle	1
6	48-2-4-1	挑线杆 Thread Take-up Lever	1
7	45-3-1-1	送料牙 Reed Dog	1
8	48-4-1	摆动护针1/4 Driving Needle Guard(1/4")	1
9	48-4-2	左弯针曲柄 Looper Holder Asm.(left)	1
10	48-4-3	固定护针杆 Counter Needle Guard	1
11	48-4-4	护针杆座 Needle Guard Base	1
12	48-6-1	压脚组件 Presser Foot Asm.	1
13	48-7-2	底线松线板 Looper Release Plate	1
14	48-7-3	面线松线板 Tension Release Plate	1
15	48-7-4	底线导线钩 Looper Thread Guide Plate	1
16	48-7-5	凸轮导线钩部件 Looper Thread Guide Asm.	1
17	48-7-6	松线曲柄组件 Release Arm Asm.	1
18	48-7-7	面线夹线器部件 Needle Thread Tension Asm.	1
19	48-7-8	底线夹线器部件 Lower Thread Tension Asm.	1

16 直驱机型专用件

DIRECTLY DRIVING TYPE EXCLUSIVE PARTS



序号 Ref.No	图号 Part.Number	名称	Description	数量 QTY
1	40-16-1	上轴油封	On the shaft seal	1
2	40-16-2	上轴联轴器	On-axis coupling	1
3	40-16-3	上轴联轴器紧固螺钉	Screw	2
4	40-16-4	地线螺钉垫圈	Ground screw washer	1
5	40-16-5	联轴器橡胶圈	Rubber ring coupling	1
6	40-16-6	电机联轴器	Motor coupling	1
7	40-16-7	O形圈	O-Ring	1
8	40-16-8	电机	Motor	1
9	40-16-9	上轴电机螺钉组件	Screw	4
10	40-16-10	卡簧	Retainer	1
11	40-16-11	垫片	Gasket	1
12	40-16-12	停针磁铁组件	Stop pin magnet assembly	1
13	40-16-13	波形垫圈	Wave washer	1
14	40-16-14	上轮	Last Round	1
15	40-16-15	上轮螺钉	Screw	2
16	40-16-16	后盖	Back cover	1
17	40-16-17	后盖螺钉	Screw	3
18	40-16-18	保险开关支架轴	Cutout bracket axis	1
19	40-16-19	保险开关弹簧	Insurance switch spring	1
20	40-16-20	保险开关支架	Insurance switch bracket	1
21	40-16-21	保险插座螺钉	Screw	2
22	40-16-22	保险开关	Cutout	1
23	40-16-23	保险开关固定螺钉	Screw	2
24	40-16-24	保险安装板	Insurance mounting plate	1