

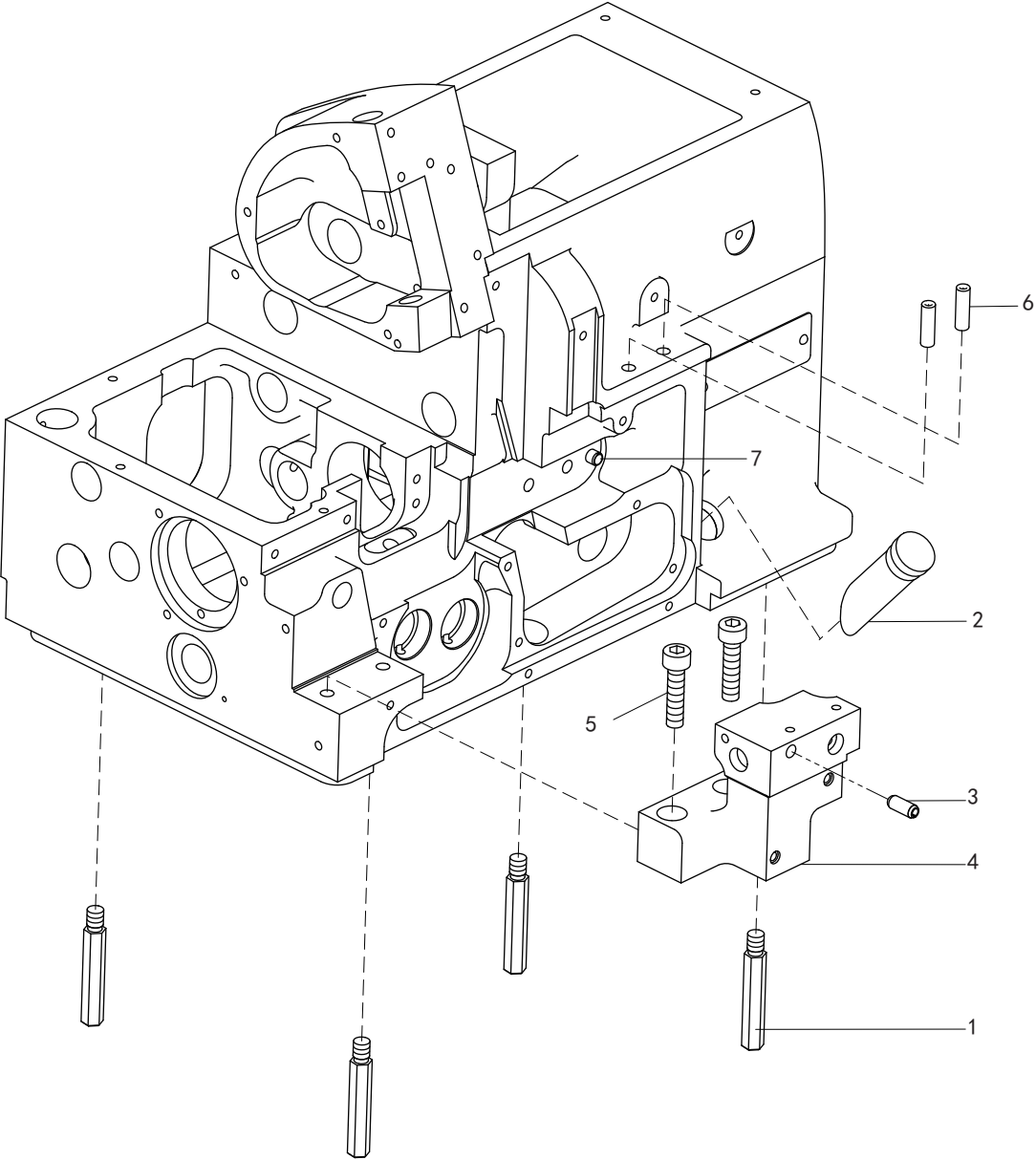
高速包缝机

HIGH-SPEED OVERLOCK SEWING MACHINE

零件手册

PARTS BOOK

1. 机壳部件 /MACHINE BED FRAME

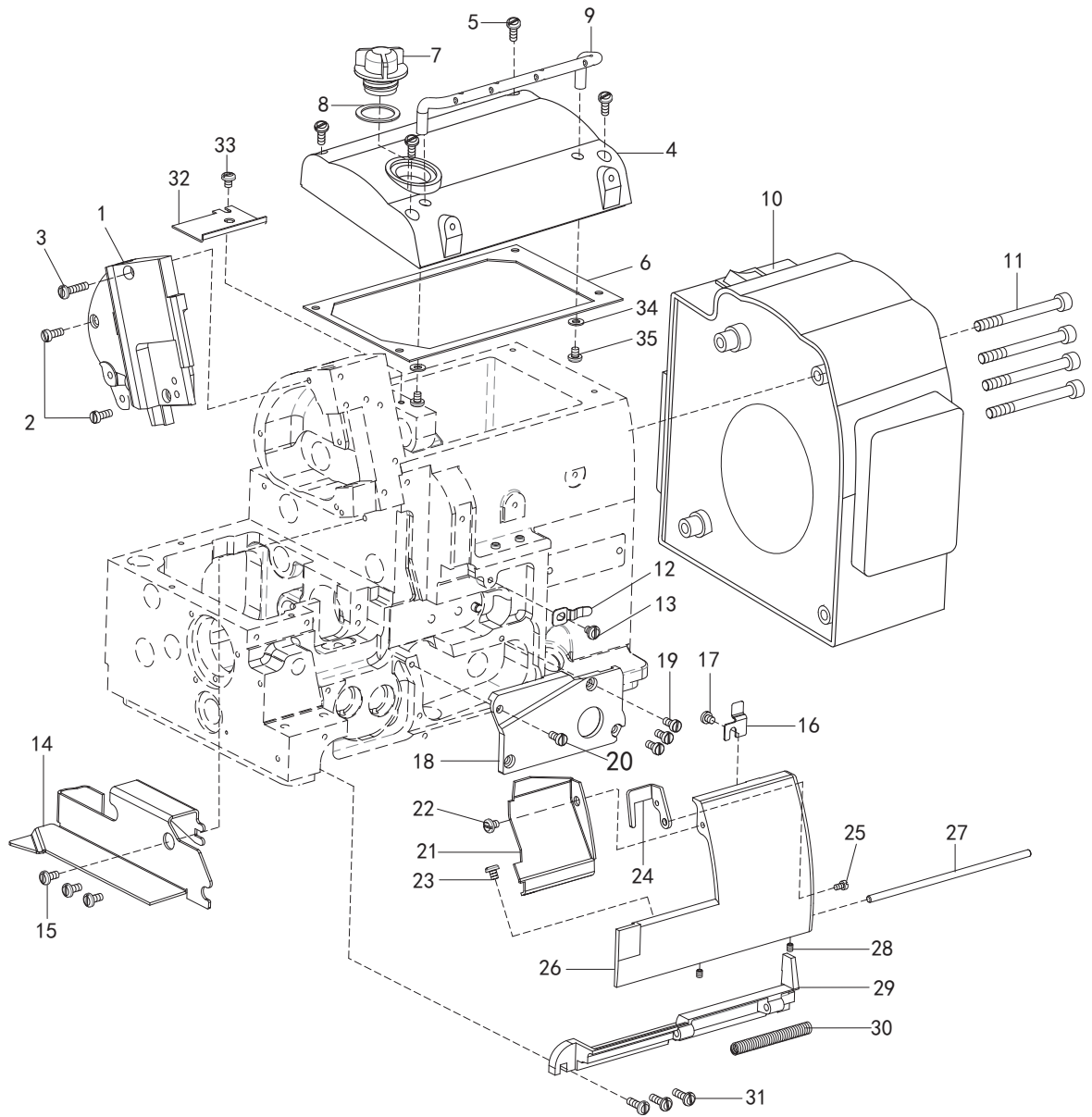


1. 机壳部件

MACHINE BED FRAME

序号 No.	件号 Pars No.	名称	Description	数量 Number
1	10011847	机壳支柱	BED PIN	4
2	10042957	油标	OIL SIGHT GAUGE	1
3	10012905	销 $\phi 5 \times 12$	SPRING PIN	1
4	10033784	下刀座(3、4线)	BRACKET	1
	10033783	下刀座(5、6线)	BRACKET	1
5	10009171	螺钉M6 \times 25	SCREW	2
6	10009452	穿线管	PIPE	2
7	10003486	销 $\phi 5 \times 12$	SPRING PIN	1
		*: 参看专用件表/see the guage list		

2. 外罩部件(1)/COVER(1)

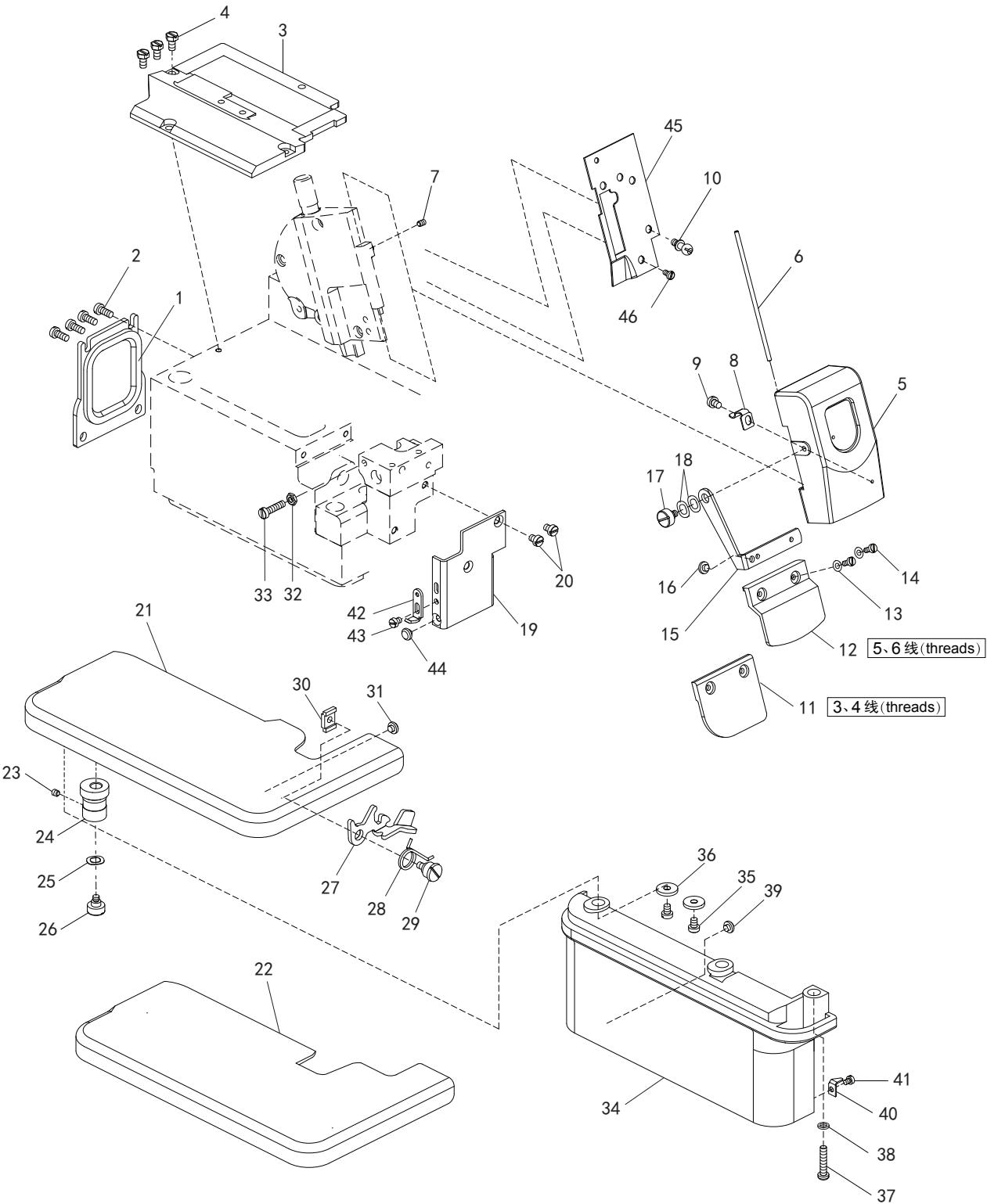


2. 外罩部件(1)

COVER (1)

序号 No.	件号 Pars No.	名称	Description	数量 Number
1	20015567	侧盖	SIDE COVER	1
2	10009104	螺钉M4×9.5	SCREW	2
3	10009101	螺钉M4×17.5	SCREW	1
4	20017673	上盖喷漆	TOP COVER	1
5	10009101	螺钉M4×17.5	SCREW	4
6	10008957	上盖密封垫	GASKET	1
7	10033758	油窗	OIL SIGHT WINDOW	1
8	10009156	油窗橡胶圈	GASKET	1
9	10009446	过线架	THREAD GUIDE	1
10	10051606	简易电控	CONTROL BOX	1
11	10042898	螺钉组件	SCREW	4
12	10033682	弹簧板	FLAT SPRING	1
13	10004171	螺钉M4×4.5	SCREW	1
14	10033745	内盖板(3、4线)	FABRIC GUARD	1
	10033679	内盖板(5、6线)	FABRIC GUARD	1
15	10010595	螺钉M4×7.5	SCREW	3
16	10033683	制动板	LATCH	1
17	10004171	螺钉M4×4.5	SCREW	1
18	10033766	上弯针架盖	COVER	1
19	10010595	螺钉M4×7.5	SCREW	3
20	10010594	螺钉M4×7.5	SCREW	1
21	10033746	前盖中(3、4线)	FRONT COVER	1
	10033685	前盖中(5、6线)	FRONT COVER	1
22	10010554	螺钉M4×5.5	SCREW	1
23	10010554	螺钉M4×5.5	SCREW	1
24	10033684	导向板	LATCH	1
25	10009597	螺钉M3×5	SCREW	1
26	20015568	前盖右	FRONT COVER	1
27	10009598	销φ4×120	PIN	1
28	10009074	螺钉M4×4	SCREW	2
29	10009508	支架	HINGE	1
30	10009509	φ6.2弹簧	SPRING	1
31	10009037	螺钉M4×12	SCREW	3
32	10033680	油板	OIL GUARD	1
33	10010554	螺钉M4×5.5	SCREW	1
34	10002980	垫圈φ4.5×φ10×1	WASHER	2
35	10002979	螺钉M4×12	SCREW	2
		*:参看专用件表/see the guage list		

3. 外罩部件 (2) /COVER (2)

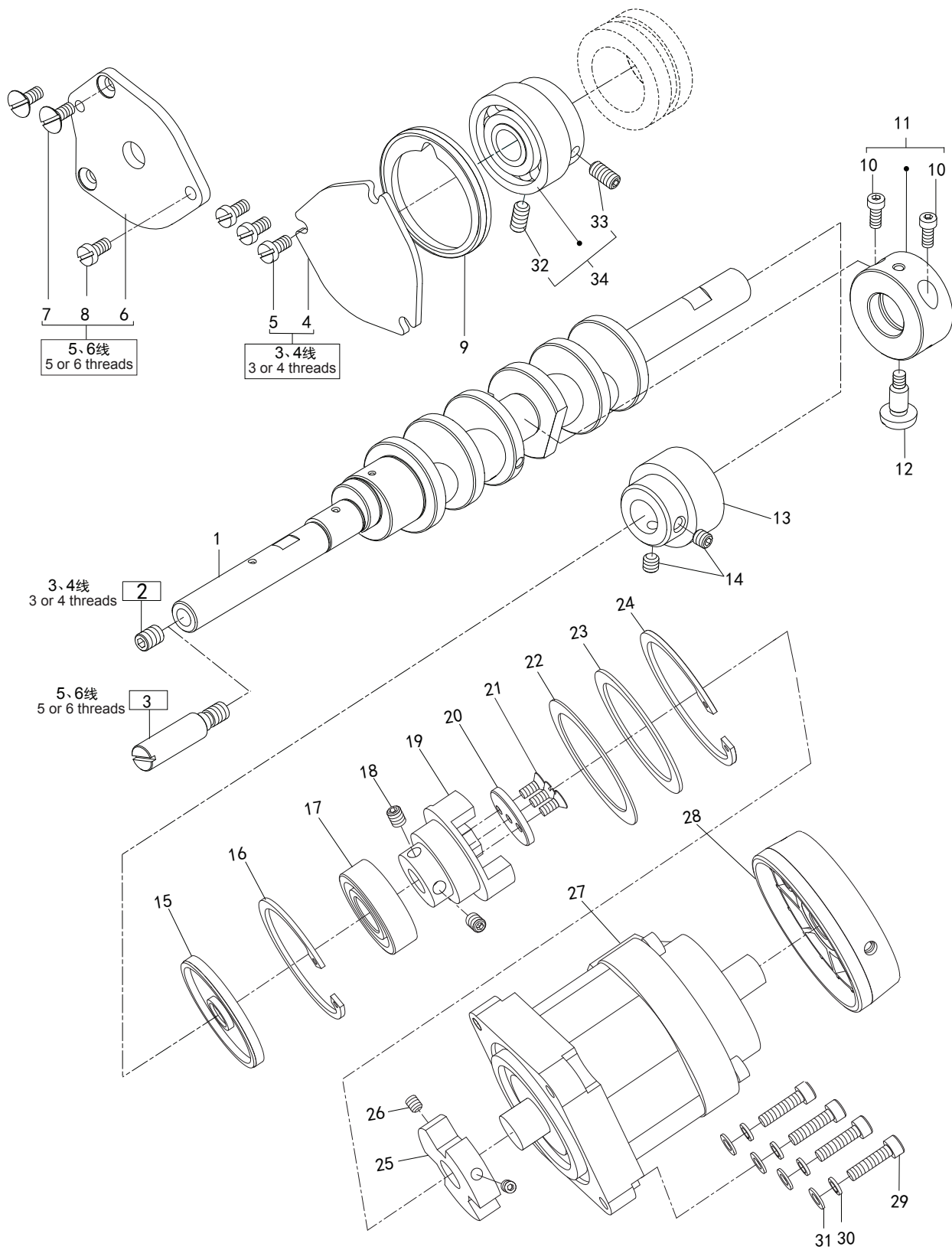


3. 外罩部件(2)

COVER (2)

序号 No.	件号 Pars No.	名称	Description	数量 Number
1	10033690	后盖板组件	COVER PLATE	1
2	10033768	螺钉M4×9.5	SCREW	4
3	10009069	左上盖	BED COVER PLATE	1
4	10009157	螺钉M4×7.5	SCREW	3
5	20011538	针杆罩	NEEDLE BAR COVER	1
6	10009615	销Φ2.5×87	PIN	1
7	10009074	螺钉M4×4	SCREW	1
8	10033701	弹簧	SPRING	1
9	10004171	螺钉M4×4.5	SCREW	1
10	10009047	螺钉	SCREW	1
11	10033761	安全罩	EYE GUARD	1
12	10033760	安全罩	EYE GUARD	1
13	10009600	螺钉M3×6	SCREW	2
14	10009599	垫圈Φ3.4×Φ7×0.5	WASHER	2
15	10014179	安全罩架	BRACKET	1
16	10009582	防震橡胶垫	CUSHION RUBBER	1
17	10009044	螺钉	SCREW	1
18	10010596	垫圈	WASHER	2
19	10033688	前盖左	LEFT FRONT COVER	1
20	10009049	螺钉M4×5	SCREW	2
21	10042986	大盖组件(普通3、4线)	CLOTH PLATE ASSEMBLY	1
22	10042983	大盖组件(普通5、6线)	CLOTH PLATE ASSEMBLY	1
23	10009074	螺钉M4×4	SCREW	1
24	10033693	大盖铜套	BUSHING	1
25	10033686	垫圈	WASHER	1
26	10010556	螺钉	SCREW	1
27	10033694	大盖卡紧板	LEVER	1
28	10033695	弹簧	SPRING	1
29	10033696	螺钉	SCREW	1
30	10033697	锁紧板	BRACKET	1
31	10033691	防震橡胶垫	CUSHION RUBBER	1
32	10009075	螺钉M4×16	SCREW	1
33	10009471	M4螺母	NUT	1
34	10033759	横盖	SIDE COVER	1
35	10010554	螺钉M4×5.5	SCREW	2
36	10009537	垫圈Φ4.3×Φ13.4×2	WASHER	2
37	10009291	螺钉M4×19.5	SCREW	1
38	10008144	垫圈	WASHER	1
39	10009582	防震橡胶垫	CUSHION RUBBER	1
40	10033700	横盖限位板	LATCH	1
41	10009529	螺钉M3×3.8	SCREW	1
42	10033689	挡板	LATCH	1
43	10009514	螺钉M3.5×4.2	SCREW	1
44	10009582	防震橡胶垫	CUSHION RUBBER	1
45	10033687	面板	FACE PLATE	1
46	10010594	螺钉M4×7.5	SCREW	1

4. 主轴部件机构/CRANKSHAFT DRIVE MECHANISM

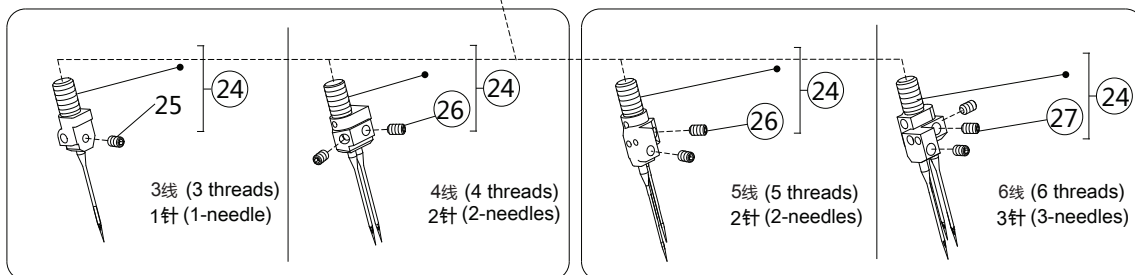
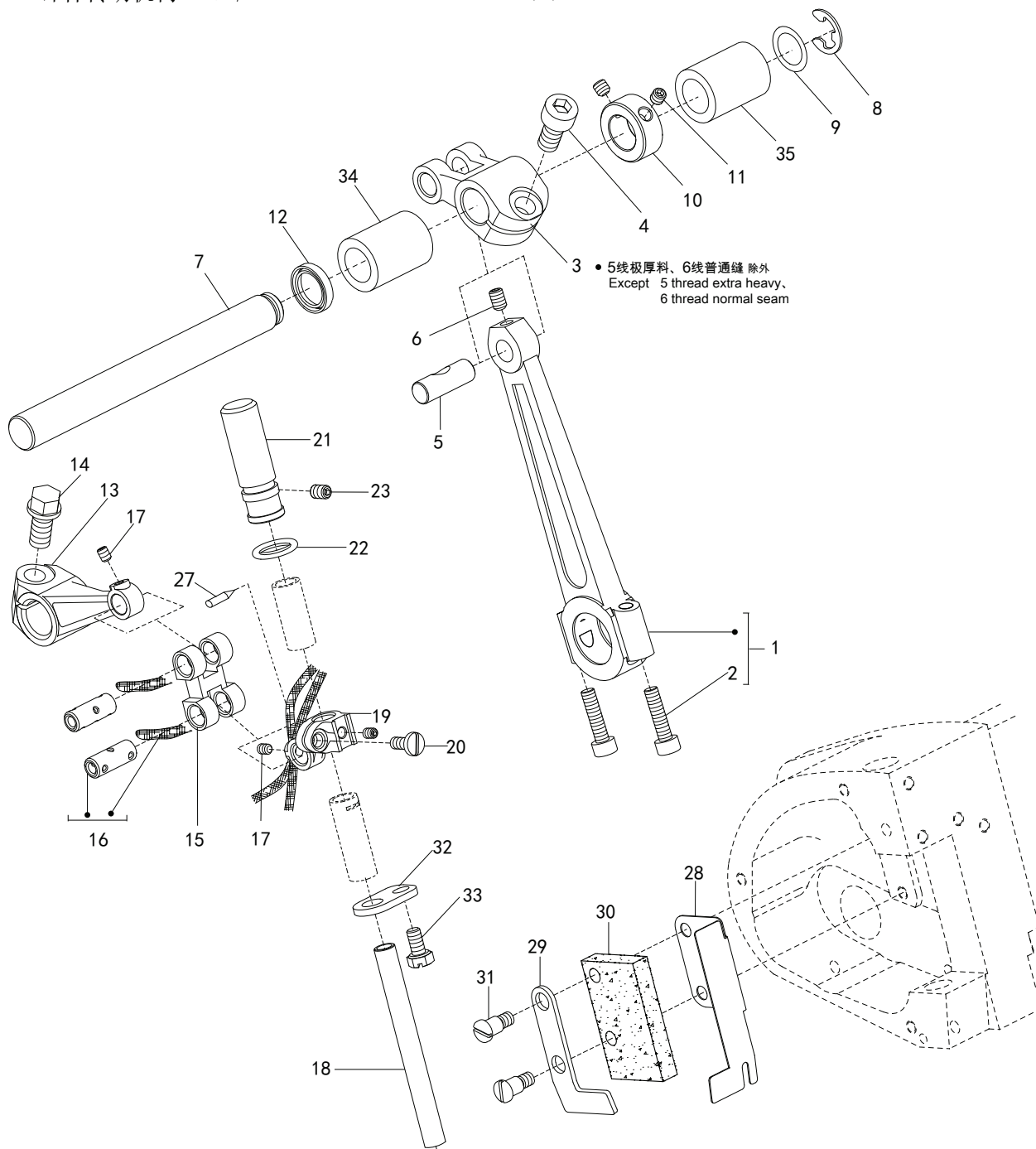


4. 主轴部件

CRANKSHAFT DRIVE MECHANISM

序号 No.	件号 Pars No.	名称	Description	数量 Number
1	10035266	主轴	CRANK SHAFT	1
2	10009187	螺钉M6×8	SCREW	1
3	10009191	螺钉	SCREW	1
4	10033747	左盖	LEFT COVER	1
5	10010595	螺钉M4×7.5	SCREW	3
6	10033705	左盖	LEFT COVER	1
7	10009195	螺钉M4×7.8	SCREW	2
8	10009104	螺钉M4×9.5	SCREW	1
9	10009226	左轴承密封圈	GASKET	1
10	10009115	螺钉M3.5×8	SCREW	2
11	10035299	轴套组件	BUSHING	1
12	10009196	螺钉M6×10.5	SCREW	1
13	10009138	蜗杆	WORM	1
14	10012162	螺钉M5×5	SCREW	2
15	10041016	油封	OIL SEAL	1
16	10007882	φ55挡圈	O RING	1
17	10024755	轴承	BEARING	1
18	10012161	螺钉M6×0.75×10	SCREW	2
19	10035087	主轴联轴器	CLUTCH	1
20	10042981	主轴端面垫片	WASHER	1
21	10009049	螺钉M4×5	SCREW	3
22	10042982	弹性垫片	SPRING	1
23	10042980	平垫	WASHER	1
24	10042996	φ62孔用弹性挡圈	RING	1
25	10036970	电机联轴器	CLUTCH	1
26	10002859	螺钉M5×6	SCREW	2
27	10037498	电机	MOTOR	1
28	20012565	手轮大组件	HANDWHEEL	1
29	10000860	螺钉	SCREW	4
30	10005537	5垫圈	WASHER	4
31	10012318	5垫圈	WASHER	4
32	10012162	螺钉M5×5	SCREW	1
33	10009167	螺钉M5×10	SCREW	1
34	20000662	轴承套组件	BEARING	1
*: 参看专用件表/see the guage list				

5. 针杆传动机构 (1) / NEEDLE DRIVE MECHANISM (1)



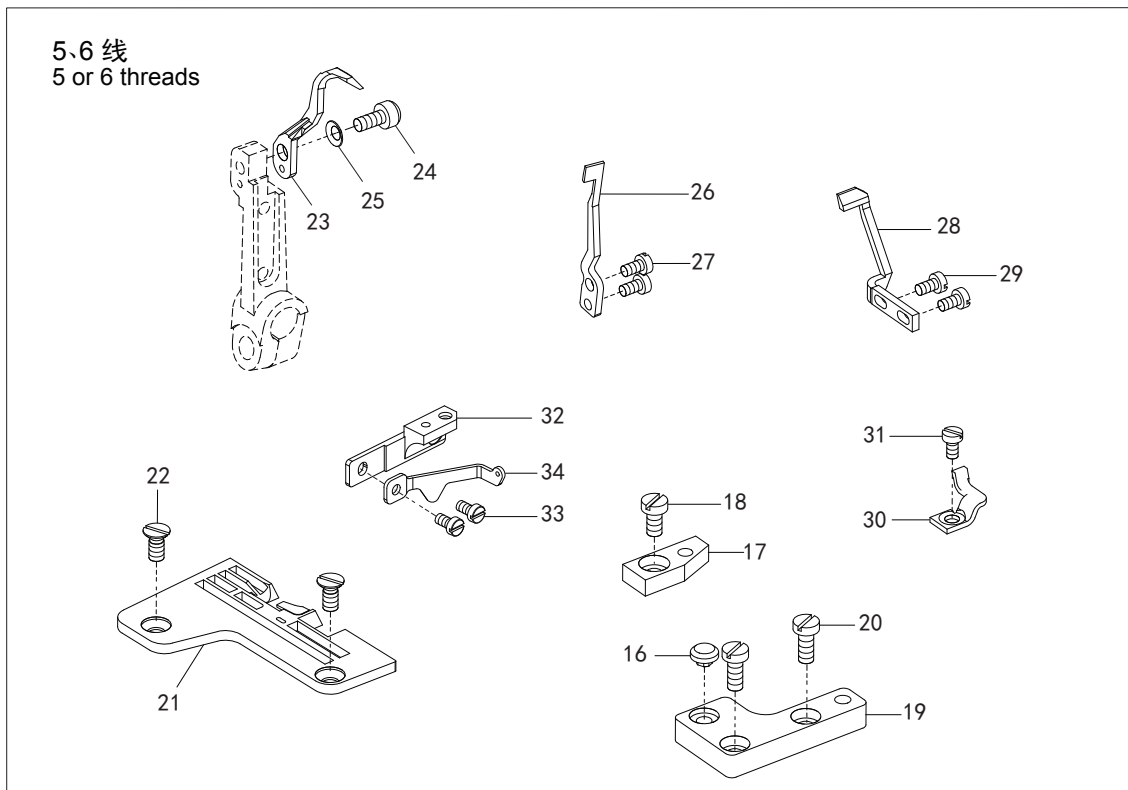
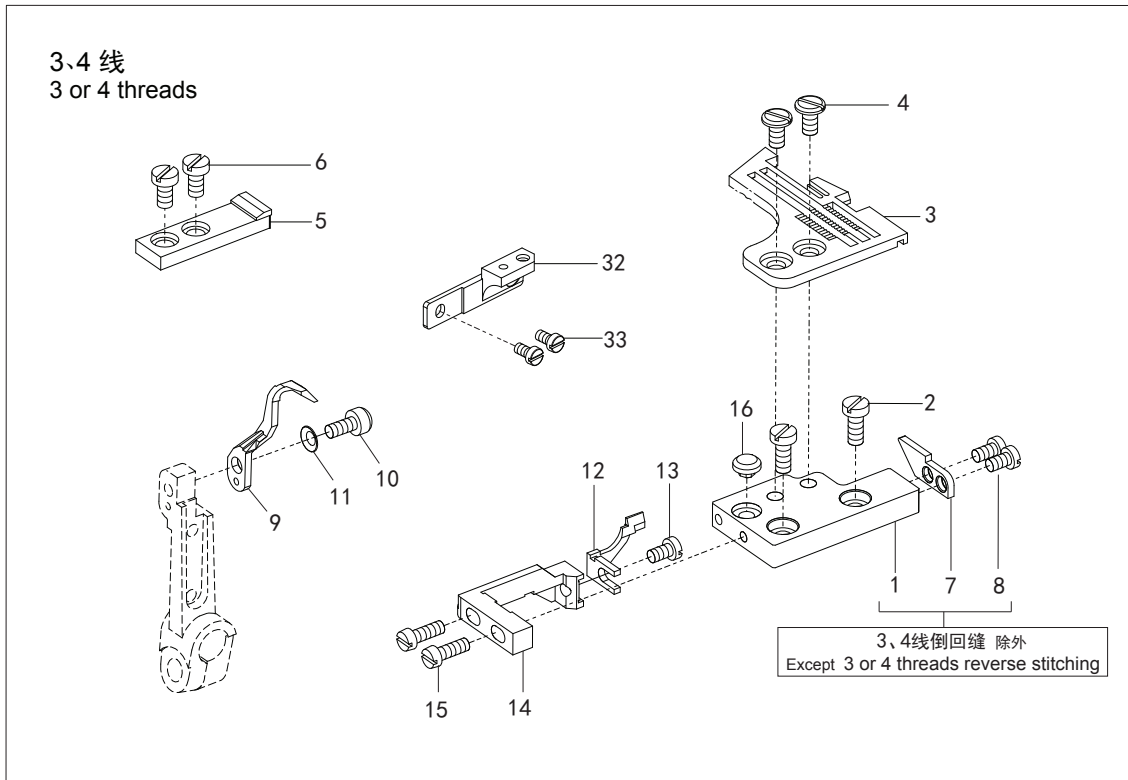
5. 针杆传动机构(1)

NEEDLE DRIVE MECHANISM (1)

序号 No.	件号 Pars No.	名称	Description	数量 Number
1	10027701	直针针杆传动连杆组件	ROD	1
2	10009103	螺钉M4×16	SCREW	2
3	10009108	针杆传动轴曲柄	CRANK	1
4	10009164	螺钉M6×0.75×12	SCREW	1
5	10009165	销φ7×20	PIN	1
6	10009109	螺钉M4×6	SCREW	1
7	10009229	针杆传动轴	SHAFT	1
8	10009239	挡圈φ7×φ14×0.8	RING	1
9	10009232	垫圈φ10.2×φ14.4×0.2	WASHER	1
10	10009231	挡圈φ11×φ19×8	COLLAR	1
11	10009074	螺钉M4×4	SCREW	2
12	10009230	油封φ10.2×φ15×3	OIL SEAL	1
13	10009244	针杆曲柄	LEVER	1
14	10009245	螺钉M6×0.75×12	BOLT	1
15	10009242	针杆双脚古	NEEDLE BAR DRIVE	1
16	20001001	双脚古销组件	PIN ASSEMBLY	2
17	10009240	螺钉M3×4	SCREW	2
18	10009250	针杆	NEEDLE BAR	1
19	10010104	针杆接头	NEEDLE BAR CLAMP	1
20	10009115	螺钉M3.5×8	SCREW	1
21	10008997	针杆帽	CAP	1
22	10009608	O形圈φ7.8×2	O RING	1
23	10009074	M4×4螺钉	SCREW	1
24	*	针夹	NEEDLE HOLDER	1
25	10009255	螺钉SM1/8"×44	SCREW	1
26	10009255	螺钉SM1/8"×44	SCREW	2
27	10009255	螺钉SM1/8"×44	SCREW	3
28	10033707	油毡架	RACK	1
29	10033708	毛毡压板	COVER	1
30	10009016	毛毡	FELT	1
31	10009019	螺钉	SCREW	2
32	10009544	针杆挡油板	COVER	1
33	10009157	螺钉M4×7.5	SCREW	1
34	10033794	针杆轴左轴套	SHAFT SLEEVE	1
35	10033795	针杆轴右轴套	SHAFT SLEEVE	1

*:参看专用件表/see the guage list

6. 针杆传动机构 (2) / NEEDLE DRIVE MECHANISM (2)

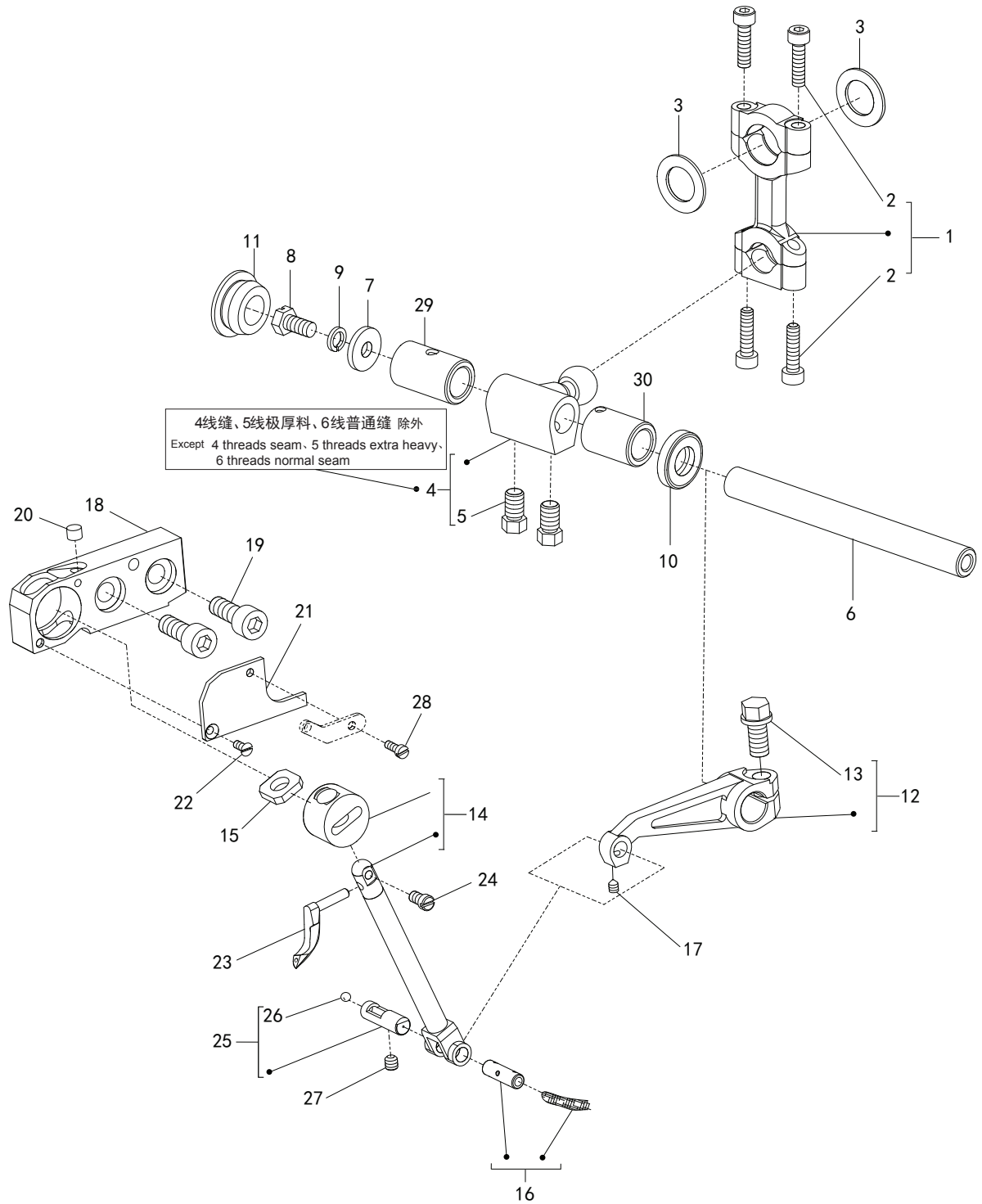


6. 针杆传动机构 (2)

NEEDLE DRIVE MECHANISM (2)

序号 No.	件号 Pars No.	名称	Description	数量 Number
1	10009297	针板座	BRACKET	1
	10042973	针板座(三自动机型)	BRACKET	1
2	10009104	螺钉M4×9.5	SCREW	2
3	*	针板	NEEDLE PLATE	1
4	10009481	螺钉SM11/64"×40	SCREW	2
5	10033749	针板托	NEEDLE PLATE SUPPOR	1
	10045865	针板托(三自动机型)	NEEDLE PLATE SUPPOR	1
6	10010595	螺钉M4×7.5	SCREW	2
7	10033748	针板键	KEY	1
8	10009589	螺钉M3.5×6	SCREW	2
9	*	直针后护针架	NEEDLE REAR GUARD	1
10	10006624	螺钉SM9/64"×40	SCREW	1
11	10009464	垫圈	SPRING WASHER	1
12	*	直针前护针架	NEEDLE FRONT GUARD	1
13	10009589	螺钉M3.5×6	SCREW	1
14	10009314	护针座	BRACKET	1
15	10009487	螺钉M3.5×10	SCREW	2
16	10009582	防震橡胶垫	CUSHION RUBBER	1
17	10034625	针板后安装板	BRACKET	1
	10045866	针板后安装板(三自动机型)	BRACKET	1
18	10010595	螺钉M4×7.5	SCREW	1
19	10034627	针板前安装板	BRACKET	1
	10042977	针板前安装板(三自动机型)	BRACKET	1
20	10009104	螺钉M4×9.5	SCREW	2
21	*	针板	NEEDLE PLATE	1
22	10009678	螺钉SM11/64"×40	SCREW	2
23	*	直针后护针架	NEEDLE GUARD	1
24	10006624	螺钉SM9/64"×40	SCREW	1
25	10009464	垫圈	SPRING WASHER	1
26	*	直针前护针架	NEEDLE FRONT GUARD	1
27	10010555	螺钉M3×5.5	SCREW	2
28	*	链直针后护针架	NEEDLE REAR GUARD	1
29	10009676	螺钉M2.5×6	SCREW	2
30	*	链直针前护针架	NEEDLE FRONT GUARD	1
31	10010555	螺钉M3×5.5	SCREW	1
32	10042962	针板托座	BRACKET	1
33	10010595	螺钉M4×7.5	SCREW	2
34	10033741	链弯前过线板	THREAD GUIDE	1
		*: 参看专用件表/see the guage list		

7. 上弯针传动机构/UPPER LOOPER DRIVE MECHANISM

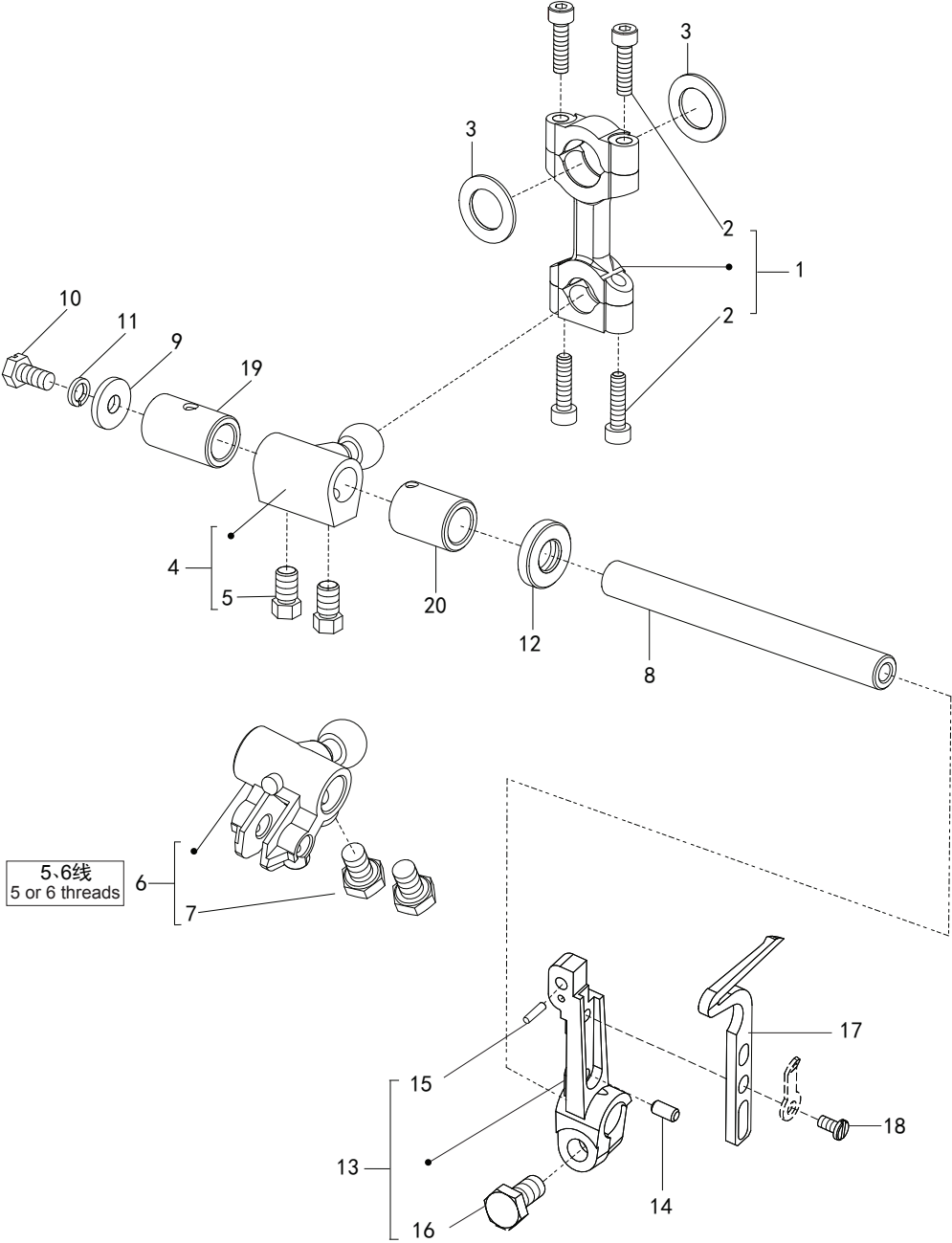


7. 上弯针机构

UPPER LOOPER DRIVE MECHANISM

序号 No.	件号 Pars No.	称 名	Dscription	数量 Number
1	10027700	上弯针传动连杆组件	ROD	1
2	10009103	螺钉M4×16	BOLT	4
3	10034399	挡圈 $\phi 12 \times \phi 19.6 \times 1.5$	GUIDE	2
4	10002662	上弯针球曲柄	CRANK	1
5	10009163	螺钉M6×0.75×9.2	SCREW	2
6	10030608	上弯针轴	SHAFT	1
7	10034711	垫 $\phi 5.2 \times \phi 14.5 \times 2$	WASHER	1
8	10009349	螺钉M5×9.8	SCREW	1
9	10005537	5垫圈	SPRING WASHER	1
10	10009399	油封 $\phi 10 \times \phi 19 \times 4$	OIL SEAL	1
11	10009381	$\phi 18$ 橡胶塞	PLUG	1
12	10009372	上弯针摇杆	LEVER	1
13	10009245	螺钉M6×0.75×12	SCREW	1
14	10033776	上弯针滑杆组件	UPPER LOOPER HOLDER	1
15	10009405	毛毡	FELT	1
16	20001060	销组件	PIN ASSEMBLY	1
17	10009240	螺钉M3×4	SCREW	1
18	10002906	上弯针滑杆座	UPPER LOOPER HOLDER	1
19	10009008	螺钉M6×16	BOLT	2
20	10009397	毛毡	FILTER	1
21	10009378	盖板	COVER	1
22	10009379	螺钉M2.5×4.8	SCREW	1
23	*	上弯针	UPPER LOOPER	1
24	10009352	螺钉SM9/64"×40	SCREW	1
25	10012322	给油销	PIN	1
26	10009826	$\phi 4$ 钢球	PLUG	1
27	10009074	螺钉M4×4	SCREW	1
28	10009353	螺钉M2.5×7	SCREW	1
29	10033786	上弯针轴后轴套	SHAFT SLEEVE	1
30	10033787	上弯针轴前轴套	SHAFT SLEEVE	1
		*: 参看专用件表/see the guage list		

8. 下弯针传动机构/LOWER LOOPER DRIVE MECHANISM



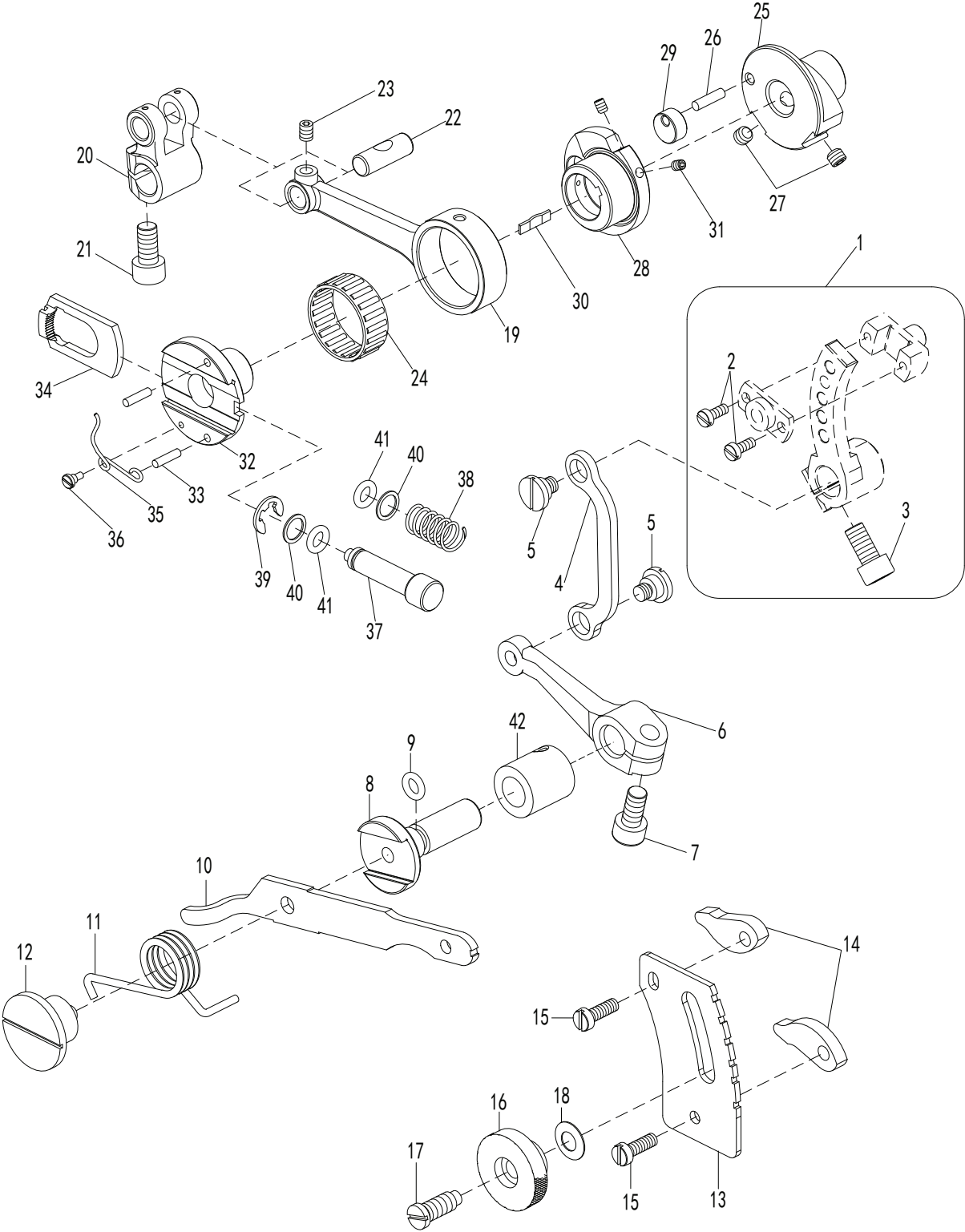
8. 下弯针机构

LOWER LOOPER DRIVE MECHANISM

序号 No.	件号 Pars No.	名称	Description	数量 Number
1	10027700	上弯针传动连杆组件	ROD HOLDER	1
2	10009103	螺钉M4×16	SCREW	4
3	10009111	挡圈φ12×φ19.6×1.5	GUIDE	2
4	10004358	下弯针球曲柄(4线)	CRANK(4 THREADS)	1
	10002662	下弯针球曲柄(3线)	CRANK(3 THREADS)	1
5	10009163	螺钉M6×0.75×9.2	SCREW	2
6	10002663	下弯针球曲柄	CRANK	1
7	10009163	螺钉M6×0.75×9.2	SCREW	2
8	10034609	上弯针轴	SHAFT	1
9	10033711	垫圈φ5.2×φ14.5×2	WASHER	1
10	10009349	螺钉M5×9.8	SCREW	1
11	10005537	5垫圈	SPRING WASHER	1
12	10009399	油封φ10×φ19×4	OIL SEAL	1
13	10002929	下弯针架组件	LOWER LOOPER HOLDER	1
14	10002956	销φ3.5×7	PIN	1
15	10009480	销φ2×7.5	PIN	1
16	10009245	螺钉M6×0.75×12	BOLT	1
17	*	下弯针	LOWER LOOPER	1
18	10009601	螺钉SM9/64"×40	SCREW	1
19	10033788	下弯针轴后轴套	SHAFT SLEEVE	1
20	10033787	下弯针轴前轴套	SHAFT SLEEVE	1

*:参看专用件表/see the guage list

9. 送布机构(1)/FEED MECHANISM(1)

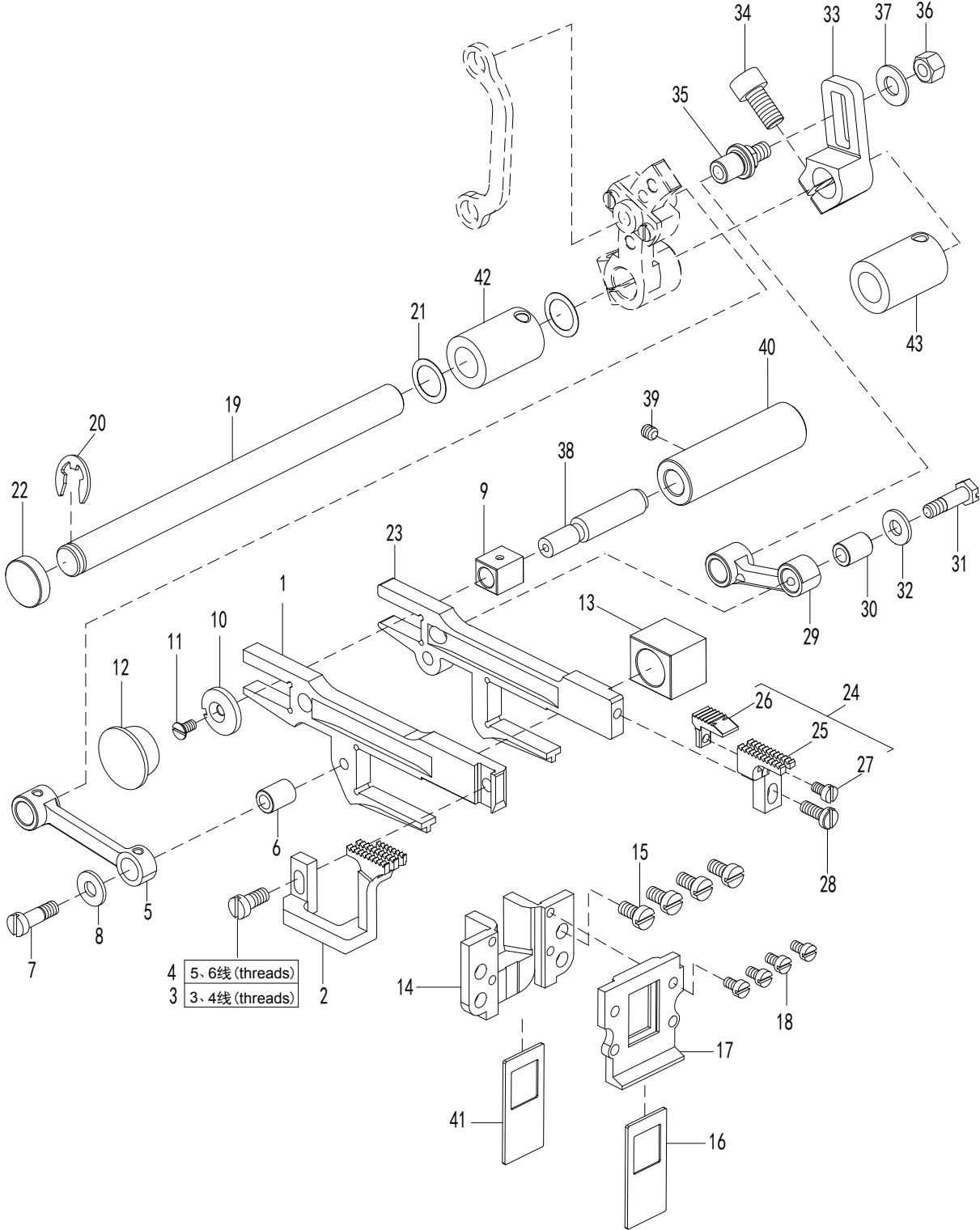


9. 送布机构(1)

FEED MECHANISM(1)

序号 No.	件号 Pars No.	称 名	Description	数量 Number
1	10033785	差动调节右曲柄组件	CRANK ASSEMBLY	1
2	10009625	螺钉M3×7.5	SCREW	2
3	10009164	螺钉M6×0.75×12	BOLT	1
4	10009605	差动调节连杆	DIFFERENTIAL FEED ROD	1
5	10009624	螺钉M5×4	SCREW	2
6	10009607	差动调节左曲柄	LEVER	1
7	10009164	螺钉M6×0.75×12	BOLT	1
8	10034607	差动调节轴	SHAFT	1
9	10009608	O形圈	O RING	1
10	10009560	调节杆	LEVER	1
11	10009563	弹簧	SPRING	1
12	10033713	调节杆	LEVER	1
13	10033715	调节指示板	REGULATOR PLATE	1
14	10009566	限位片	STOPPER	2
15	10009037	螺钉M4×12	SCREW	2
16	10009565	螺母M6×0.75	NUT	1
17	10009562	螺钉	SCREW	1
18	10009564	垫圈	SPRING WASHER	1
19	10002886	滚针轴承连杆	ROD	1
20	10009260	送布曲柄	CRANK	1
21	10009164	螺钉M6×0.75×12	BOLT	1
22	10034610	销 $\phi 7 \times 20$	PIN	1
23	10009109	螺钉M4×6	SCREW	1
24	10002888	轴承	NEEDLE BEARING	1
25	10003217	针距调节偏心轮片	REGULATOR	1
26	10003219	销 $\phi 3 \times 12$	PIN	1
27	10012162	螺钉M5×5	SCREW	2
28	10009327	送布偏心轮	ECCENTRIC	1
29	10003218	送布偏心轮导轮	GUIDE	1
30	10009326	弹簧	FLAT SPRING	1
31	10013019	螺钉M3×4	SCREW	2
32	10002885	针距调节凸轮	ECCENTRIC	1
33	10009298	销 $\phi 2.5 \times 10$	SPRING PIN	2
34	10002889	内齿锁紧块	RATCHET	1
35	10002887	弹簧	SPRING	1
36	10002890	螺钉	SCREW	1
37	10009258	按钮轴	PUSH BUTTON	1
38	10009262	弹簧	SPRING	1
39	10009654	6挡圈	RING	1
40	10009257	垫圈 $\phi 7.2 \times \phi 9.5 \times 0.5$	WASHER	2
41	10009261	O形圈	O RING	2
42	10009426	差动轴轴套	SHAFT SLEEVE	1

10. 送布机构 (2) / FEED MECHANISM (2)

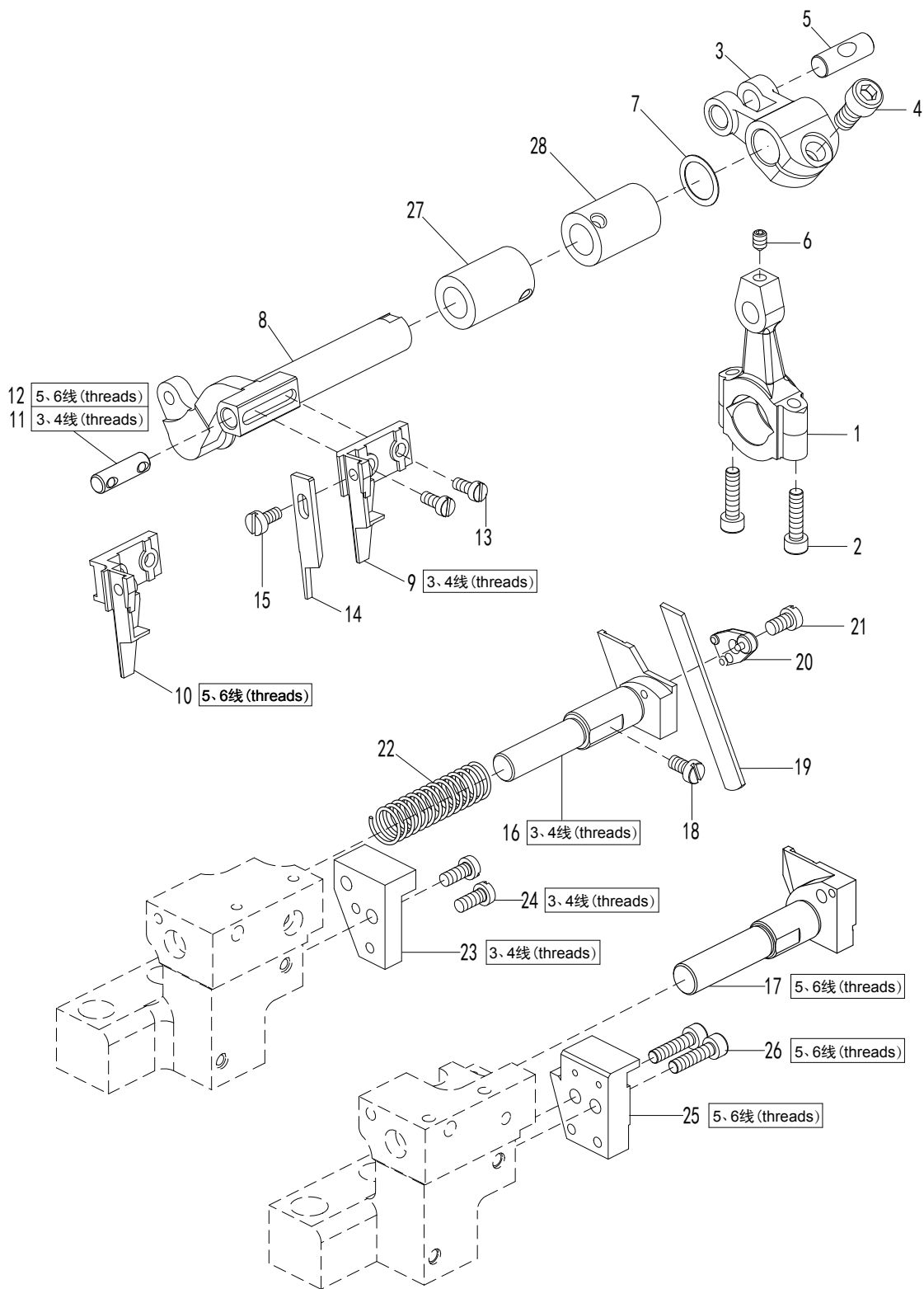


10. 送布机构(2)

FEED MECHANISM(2)

序号 No.	件号 Pars No.	称 名	Description	数量 Number
1	10009631	差动牙架	DIFFERENTIAL FEED BAR	1
2	*	差动送料牙	DIFFERENTIAL FEED DOG	1
3	10009586	螺钉SM9/64"×40	SCREW	1
4	10009601	螺钉SM9/64"×40	SCREW	1
5	10009630	差动送料连杆	DIFFERENTIAL FEED LINK	1
6	10009569	连杆销套	BUSHING	1
7	10009573	螺钉SM11/64"×40	SCREW	1
8	10009571	垫圈 $\phi 5 \times \phi 11.2 \times 1.2$	WASHER	1
9	10009633	方型滑块	BLOCK	1
10	10009627	垫圈	WASHER	1
11	10009626	螺钉M3×4.35	SCREW	1
12	10009576	$\phi 16$ 橡胶塞	PLUG	1
13	10009629	抬牙滑块	FEED BAR LIFT	1
14	10042959	牙架导板	FEED BAR GUIDE	1
15	10010595	螺钉M4×7.5	SCREW	4
16	10042960	内油封	OIL SHIELD	2
17	10042958	油封架	GUIDE	1
18	10009597	螺钉M3×5	SCREW	4
19	10034608	送布轴	SHAFT	1
20	10009239	挡圈 $\phi 7 \times \phi 14 \times 0.8$	RING	1
21	10009232	垫圈 $\phi 10.2 \times \phi 14.4 \times 0.2$	WASHER	2
22	10010931	$\phi 13 \times \phi 15 \times 5$ 油封	PLUG	1
23	10009567	送布牙架A	MAIN FEED BAR	1
24	*	主送料牙组件	MAIN FEED DOG ASSEMBLY	1
25	*	主送料牙主体	MAIN FEED DOG	1
26	*	辅助送料牙	ASSISTANT FEED DOG	1
27	10010555	螺钉M3×5.5	SCREW	1
28	10009586	螺钉SM9/64"×40	SCREW	1
29	10009568	送料连杆	MAIN FEED LINK	1
30	10009569	连杆销套	BUSHING	1
31	10009573	螺钉SM11/64"×40	SCREW	1
32	10009571	垫圈 $\phi 5 \times \phi 21.2 \times 1.2$	WASHER	1
33	10009574	方口曲柄	CRANK	1
34	10009164	螺钉M6×0.75×12	BOLT	1
35	10009570	销	PIN	1
36	10009467	螺母M5	NUT	1
37	10012393	垫圈 $\phi 6.2 \times \phi 13 \times 1$	WASHER	1
38	10034606	偏心轴	ECCENTRIC PIN	1
39	10009074	螺钉M4×4	SCREW	1
40	10034614	轴套	BUSHING	1
41	10042961	外油封	OIL SHIELD	1
42	10033790	送布轴后轴套	SHAFT SLEEVE	1
43	10033789	送布轴前轴套	SHAFT SLEEVE	1

11. 切布机构/KNIFE DRIVE MECHANISM



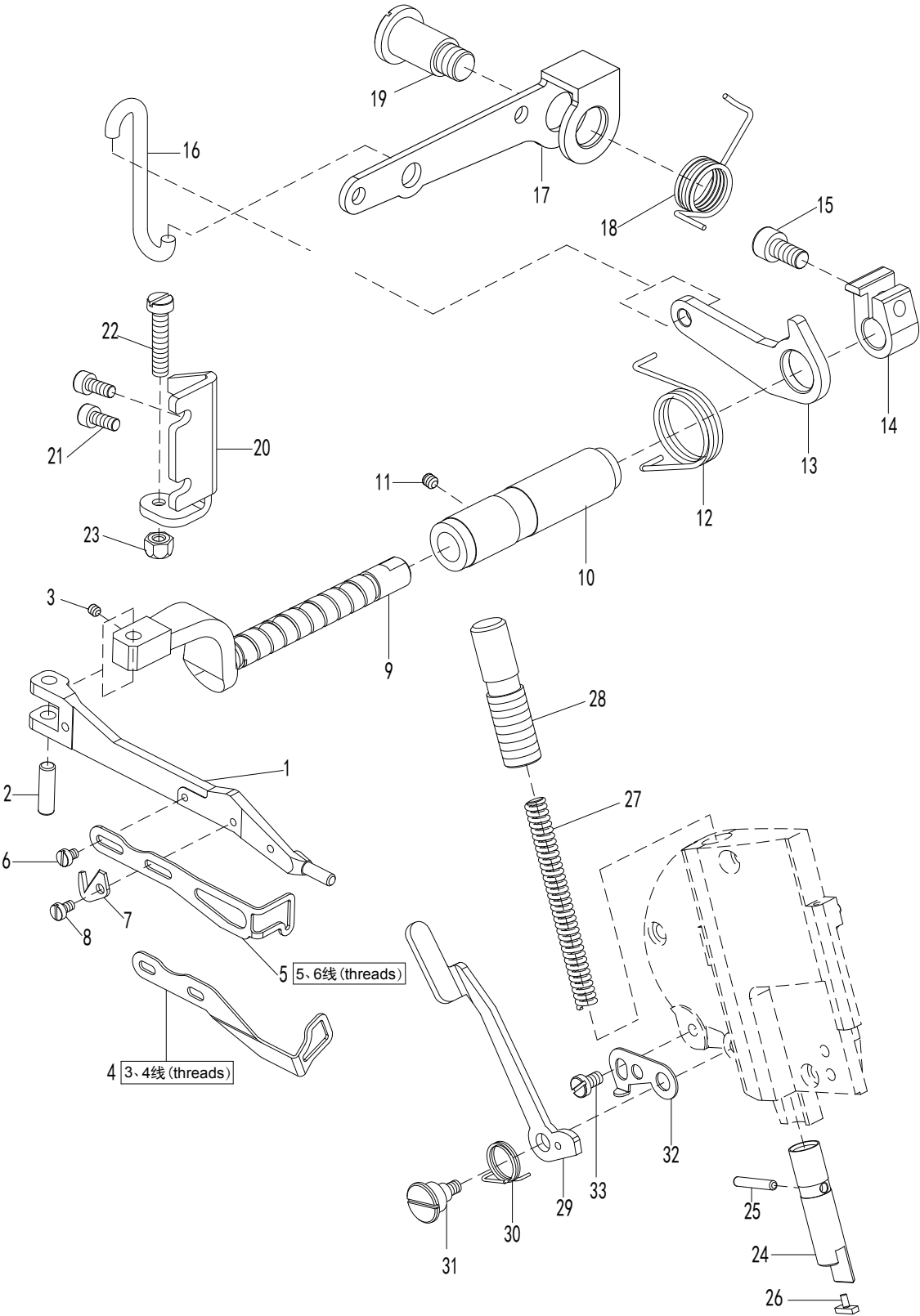
11. 切布机构

KNIFE DRIVE MECHANISM

序号 No.	件号 Pars No.	称 名	Description	数量 Number
1	10002664	上刀传动连杆组件	ROD	1
2	10009103	螺钉M4×16	SCREW	2
3	10009110	上刀曲柄	CRANK	1
4	10009164	螺钉M6×0.75×12	SCREW	1
5	10009165	销 φ7×20	PIN	1
6	10009109	螺钉M4×6	SCREW	1
7	10009709	垫圈 φ12.2×φ16.2×0.3	WASHER	1
8	10009484	上刀轴	UPPER BLADE LEVER	1
9	10009488	上刀架	UPPER BLADE CLAMP	1
10	10009764	上刀架	UPPER BLADE CLAMP	1
11	10009489	销 φ6×19	PIN	1
12	10009711	销 φ6×20	PIN	1
13	10009115	螺钉M3.5×8	SCREW	2
14	*	上刀	UPPER BLADE	1
15	10009483	螺钉SM9/64"×40	SCREW	1
16	10009490	下刀架	LOWER BLADE HOLDER	1
17	10009773	下刀架	LOWER BLADE HOLDER	1
18	10010595	螺钉M4×7.5	SCREW	1
19	*	下刀	LOWER BLADE	1
20	10009485	下刀压板	LOWER BLADE CLAMP	1
21	10034620	螺钉SM11/64"×40	SCREW	1
22	10009746	φ11.5弹簧	SPRING	1
23	10034613	下刀架托板	GUIDE	1
24	10009104	螺钉M4×9.5	SCREW	2
25	10009673	针板座托	GUIDE	1
26	10009037	螺钉M4×12	SCREW	2
27	10033791	上刀轴右轴套	SHAFT SLEEVE	1
28	10033794	上刀轴左轴套	SHAFT SLEEVE	1

*:参看专用件表/see the guage list

12. 压脚机构(1)/PRESSER FOOT MECHANISM(1)

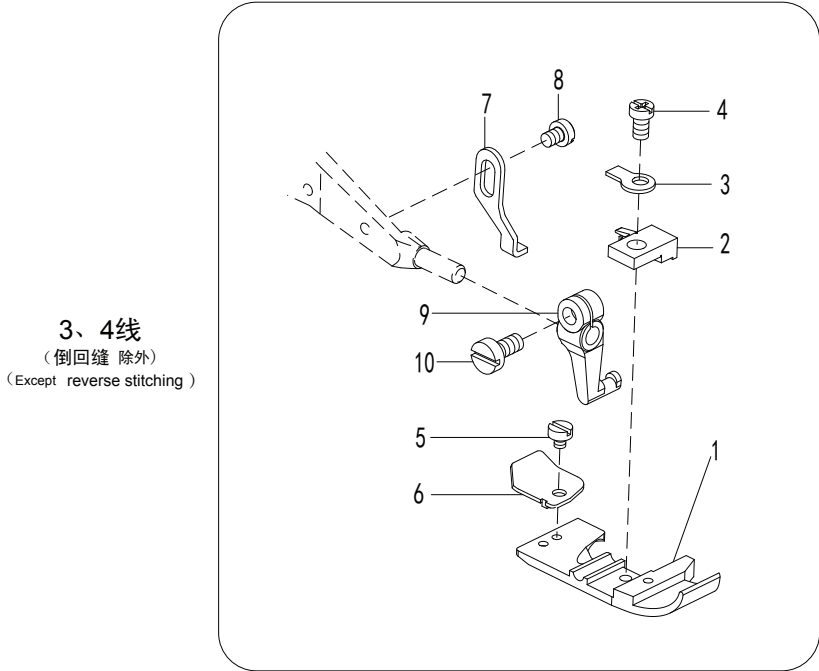
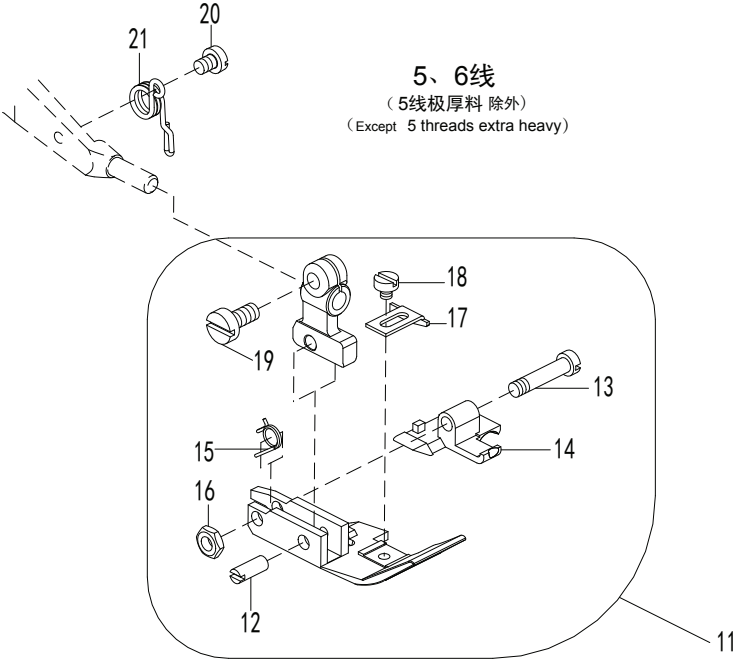


12. 压脚机构 (1)

PRESSER FOOT MECHANISM(1)

序号 No.	件号 Pars No.	名称	Description	数量 Number
1	10009315	压脚臂	PRESSER ARM	1
2	10009319	销 $\phi 5 \times 17.2$	PIN	1
3	10014216	螺钉 $M4 \times 0.5 \times 4$	SCREW	1
4	10033750	防护架	FINGER GUARD	1
5	10033724	防护架	FINGER GUARD	1
6	10009529	螺钉 $M3 \times 3.8$	SCREW	1
7	10009318	割线刀	CHAIN CUTTER	1
8	10009597	螺钉 $M3 \times 5$	SCREW	1
9	10039026	压脚轴	SHAFT	1
10	10034617	轴套	BUSHING	1
11	10009074	螺钉 $M4 \times 4$	SCREW	1
12	10012101	弹簧	SPRING	1
13	10033721	抬压脚连杆	LEVER	1
14	10034616	抬压脚曲柄	COLLAR	1
15	10009616	螺钉 $M6 \times 0.75 \times 14$	SCREW	1
16	10009622	抬压脚拉杆	LINK	1
17	10033722	抬压脚杠杆	FOOT LIFT	1
18	10009620	弹簧	SPRING	1
19	10009621	螺钉	SCREW	1
20	10033723	制动板	STOPPER	1
21	10009104	螺钉 $M4 \times 9.5$	SCREW	2
22	10009623	螺钉 $M5 \times 24$	SCREW	1
23	10009467	螺母 $M5$	NUT	1
24	10009554	压脚杆	PRESSER BAR	1
25	10002844	销 $\phi 3 \times 18$	SPRING PIN	1
26	10009454	塑料垫	PLASTIC MAT	1
27	10009557	弹簧	SPRING	1
28	10009581	螺钉	SCREW	1
29	10033719	压脚扳手	LEVER	1
30	10009473	弹簧	SPRING	1
31	10009474	螺钉	SCREW	1
32	10033720	挡板	STOPPER	1
33	10009556	螺钉 $M4 \times 7$	SCREW	1
*: 参看专用件表/see the guage list				

13. 压脚机构(2)/PRESSER FOOT MECHANISM(2)

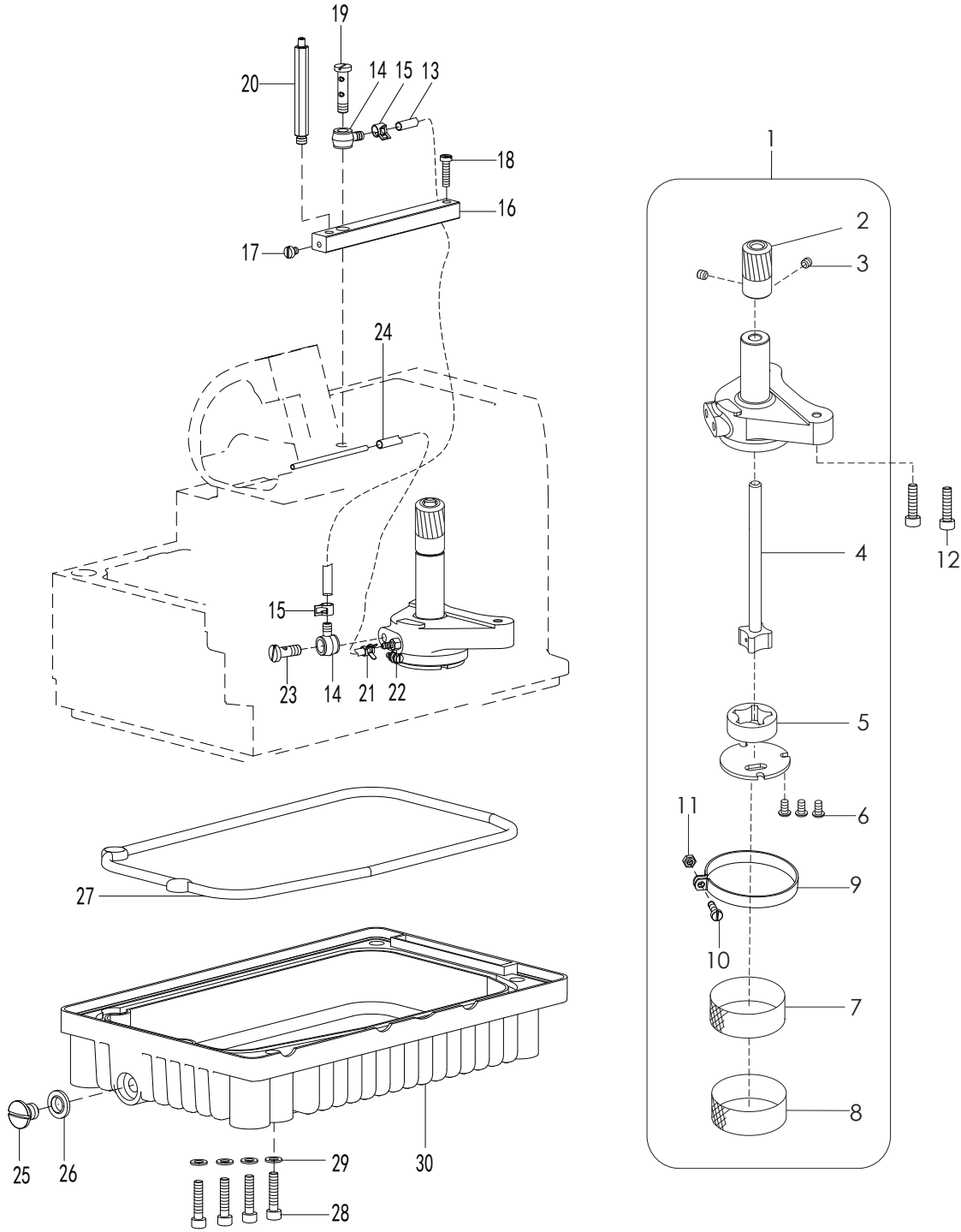


13. 压脚机构 (2)

PRESSER FOOT MECHANISM (2)

序号 No.	件号 Pars No.	名称	Description	数量 Number
1	*	压脚底板	PRESSER FOOT	1
2	*	压脚吐线舌	PRESSER FOOT FINGER	1
3	10003188	弹簧压板	SET PLATE	1
4	10003192	螺钉SM1/8"×44	SCREW	1
5	10003189	螺钉SM3/32"×56	SCREW	1
6	10003190	压脚辅助板	AUXILIARY	1
7	10033751	压脚限位板	REGULATOR	1
8	10009529	螺钉M3×3.8	SCREW	1
9	10002850	压脚连接柄	BRACKET	1
10	10009580	螺钉SM9/64"×40	SCREW	1
11	*	压脚组件	PRESSER FOOT ASSEMBLY	1
12	10003268	销φ3.18×8	PIN	1
13	10003272	螺钉SM1/8"×44	SCREW	1
14	10003271	压脚后底	AFTER FLOOR	1
15	10002757	弹簧	SPRING	1
16	10002759	螺钉SM1/8"×44	NUT	1
17	10003270	挡板	FABRIC GUIDE	1
18	10003189	螺钉SM3/32"×56	SCREW	1
19	10009580	螺钉SM9/64"×40	SCREW	1
20	10009529	螺钉M3×3.8	SCREW	1
21	10009651	弹簧	SPRING	1
*: 参看专用件表/see the guage list				

14. 润滑机构 / LUBRICATION MECHANISM



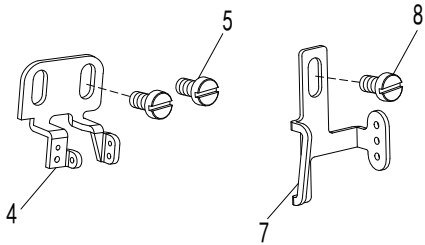
14. 润滑机构

LUBRICATION MECHANISM

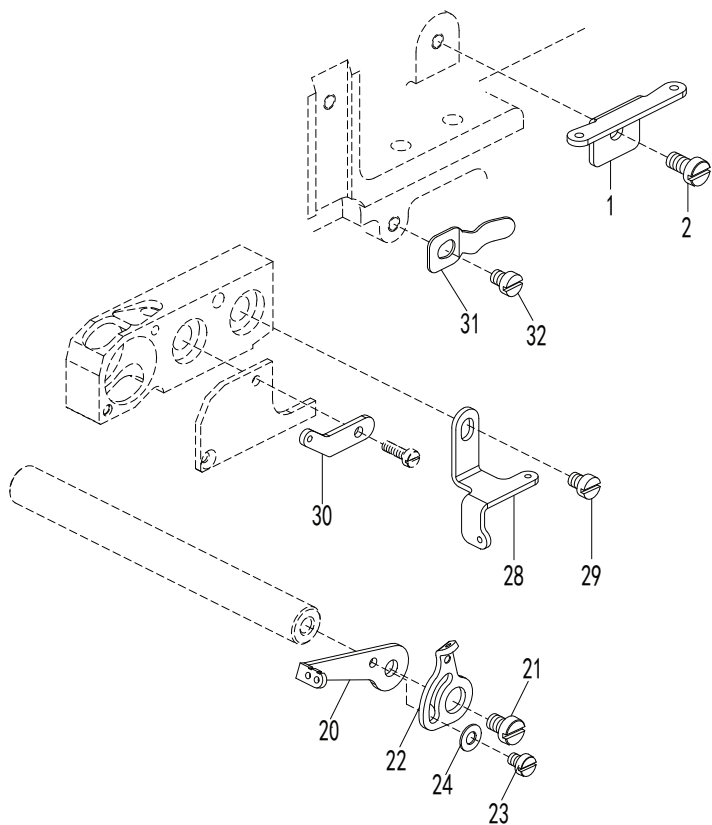
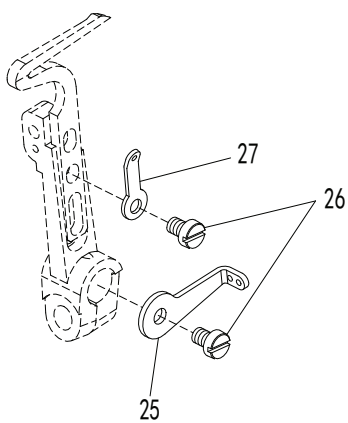
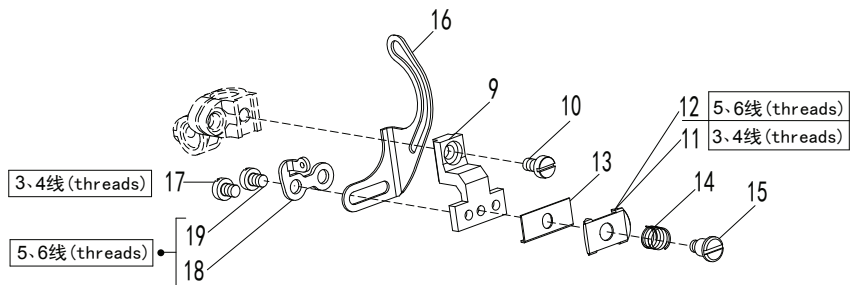
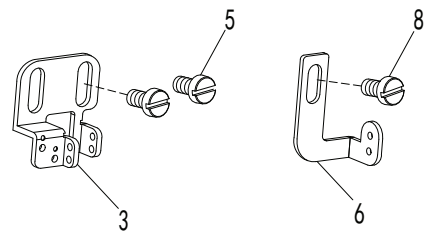
序号 No.	件号 Pars No.	名称	Description	数量 Number
1	10033774	油泵组件	PUMP ASSEMBLY	1
2	10003175	斜齿轮	WORM WHEEL	1
3	10012162	螺钉M5×5	SCREW	1
4	10003174	油泵轴组件	SHAFT	1
5	10003197	油泵外转子	OUTSIDE ROTOR	1
6	10009589	螺钉M3.5×6	SCREW	3
7	10003201	内过滤网	INSIDE FILTER	1
8	10003199	外过滤网	OUTSIDE FILTER	1
9	10003200	紧固圈	CLAMP	1
10	10003203	螺钉M3×9.5	SCREW	1
11	10003025	螺母M3	NUT	1
12	10009103	螺钉M4×16	BOLT	2
13	10007796	油管 φ4×φ6	OIL TUBE	1 (220mm)
14	10009588	塑料接头	JOINT	2
15	10011471	进油短油管夹	CLAMP	2
16	10009593	油分配器	OIL DISTRIBUTOR	1
17	10009595	螺钉M4×4.5	SCREW	1
18	10009075	螺钉M4×16	SCREW	1
19	10009590	螺钉接头	JOINT SCREW	1
20	10009594	喷油螺钉	SCREW	1
21	10009496	油管夹	CLAMP	1
22	10009591	螺钉接头	JOINT SCREW	1
23	10009592	螺钉接头	JOINT SCREW	1
24	10007793	油管 φ2.8×φ5	OIL TUBE	1 (240mm)
25	10009264	螺钉SM3/8"×28	SCREW	1
26	10009263	垫圈组件	WASHER ASSEMBLY	1
27	10047350	油盘密封垫	GASKET	1
28	10014210	螺钉M5×12	SCREW	4
29	10045821	5垫圈	WASHER	4
30	10033771	油盘	OIL RESERVOIR	1
		*: 参看专用件表/see the guage list		

15. 过线、打线部件机构 / THREAD GUIDE & THREAD TAKE-UP MECHANISM

5、6线
5 or 6 threads



3、4线
3 or 4 threads



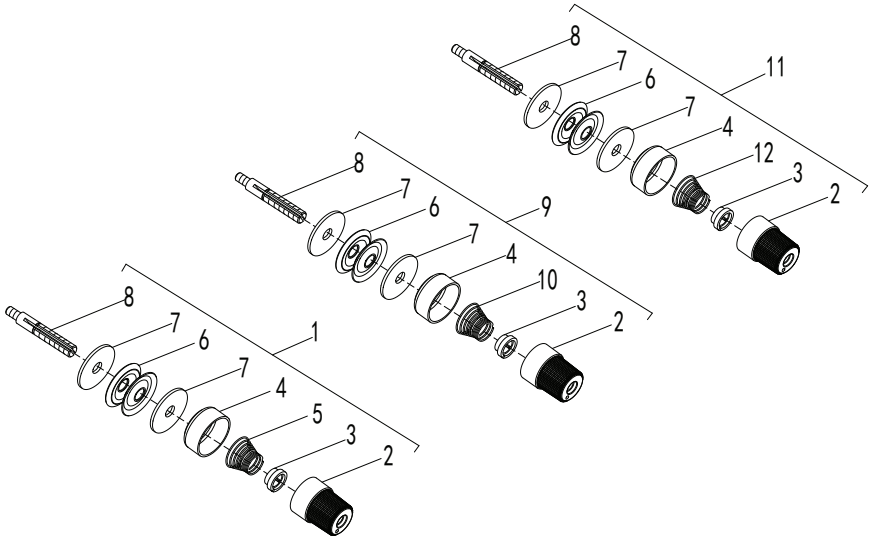
15. 过线、打线机构部件

THREAD GUIDE AND THREAD TAKEUP

序号 No.	件号 Pars No.	名称	Description	数量 Number
1	10033726	弯针上过线板	THREAD GUIDE	1
2	10010595	螺钉M4×7.5	SCREW	1
3	10033753	直针左过线架	NEEDLE THREAD GUIDE	1
4	10033732	直针左过线架	NEEDLE THREAD GUIDE	1
5	10010594	螺钉M4×7.5	SCREW	1
6	10033752	直针右过线架	NEEDLE THREAD GUIDE	1
7	10033725	直针右过线架	NEEDLE THREAD GUIDE	1
8	10010594	螺钉M4×7.5	SCREW	2
9	10009497	小夹线座	THREAD RETAINER	1
10	10010555	螺钉M3×5.5	SCREW	1
11	10009522	夹线板	THREAD RETAINER	1
12	10009525	夹线板	THREAD RETAINER	1
13	10010608	夹线板	GUIDE	1
14	10009500	弹簧 φ5.2-0.3	SPRING	1
15	10009501	螺钉	SCREW	1
16	10012262	挺线架	NEEDLE THREAD TAKE-UP	1
17	10009521	螺钉	SCREW	2
18	10010606	链直针过线板	THREAD GUIDE	1
19	10010607	螺钉M3×3.7	SCREW	2
20	10033729	上弯针轴内过线板	THREAD TAKE-UP	1
21	10010595	螺钉M4×7.5	SCREW	1
22	10033728	上弯针轴外过线板	THREAD TAKE-UP	1
23	10009529	螺钉M3×3.8	SCREW	1
24	10009599	垫圈 φ3.4×φ7×0.5	WSHER	1
25	10033730	下弯针轴过线板	THREAD TAKE-UP	1
26	10010595	螺钉M4×7.5	SCREW	1
27	10033731	下弯针过线板	THREAD GUIDE	1
28	10009524	弯针下过线板	THREAD GUIDE	1
29	10010554	螺钉M4×5.5	SCREW	1
30	10009421	上弯针过线板	THREAD GUIDE	1
31	10033682	弹簧板	SPRING PLATE	1
32	10010595	螺钉M4×7.5	SCREW	1

*: 参看专用件表/see the guage list

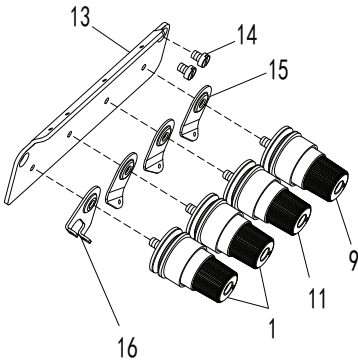
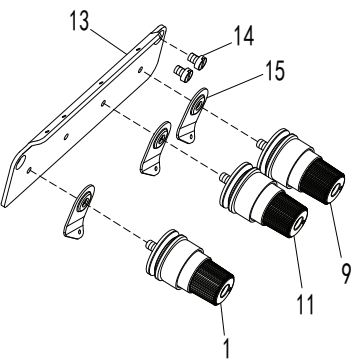
16. 线张力调节机构/THREAD TENSION MECHANISM



3线 (3 threads)

4、5线 (4、5 threads)

(4线倒回缝 除外)
(Except 4 threads reverse stitching)

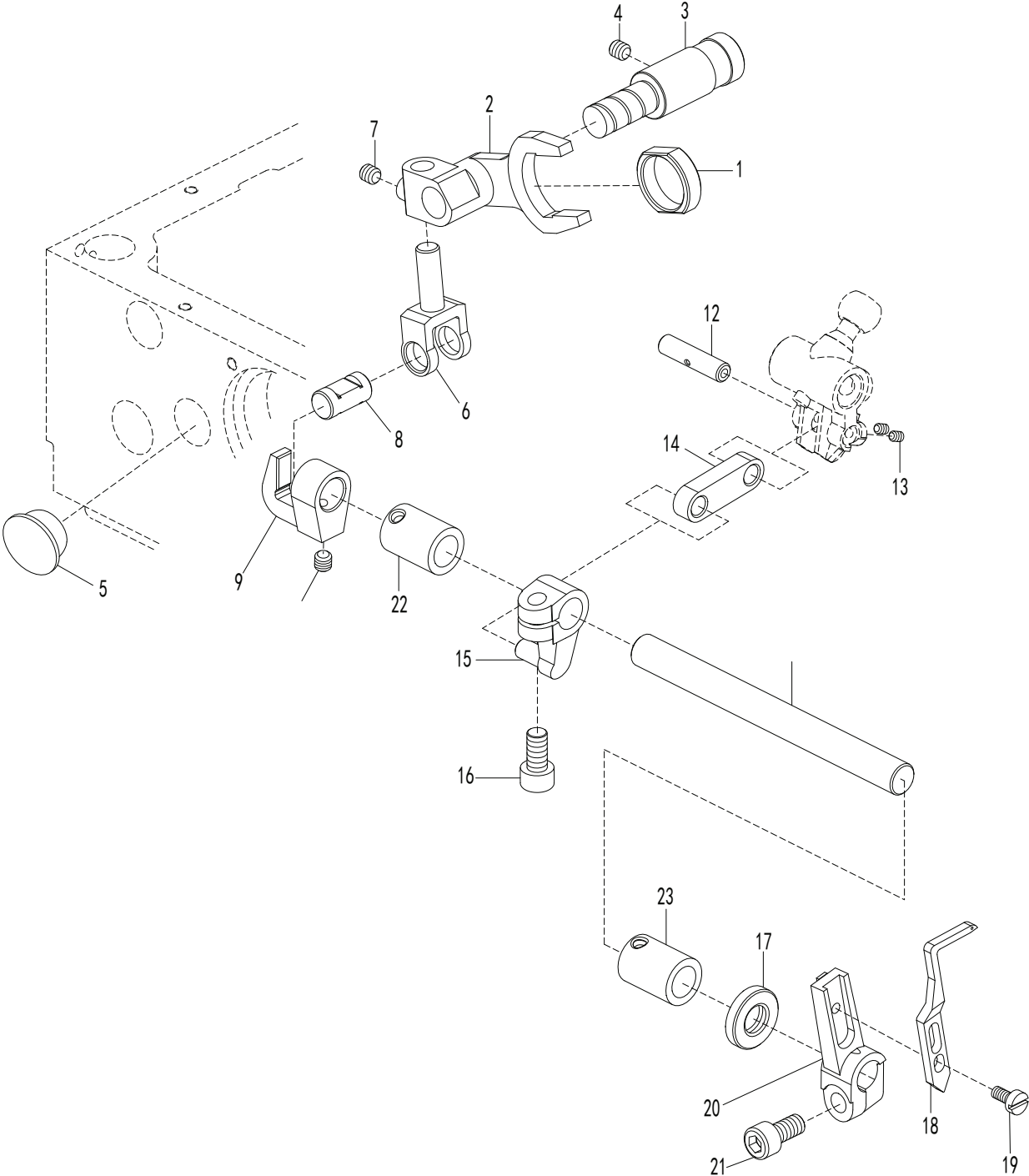


16. 线张力调节机构

THREAD TENSION MECHANISM

序号 No.	件号 Pars No.	名称	Description	数量 Number
1	10039507	直针夹线器组件	THREAD TENSION ASSEMBLY	1
2	10006875	夹线螺母	NUT	1
3	10003111	防松垫	RATCHET	1
4	10006877	夹线碗	CUP	1
5	10009534	弹簧	SPRING	1
6	10003116	夹线盘	TENSION DISC	2
7	10009010	布垫	FELT	1
8	10003112	螺钉	SCREW STUD	1
9	10039509	下弯针夹线器组件	THREAD TENSION ASSEMBLY	1
10	10009533	弹簧	SPRING	1
11	10039508	上弯针夹线器组件	THREAD TENSION ASSEMBLY	1
12	10009532	弹簧	SPRING	1
13	10003109	夹线器座	THREAD GUIDE	1
14	10009290	螺钉M4×5	SCREW	2
15	10003115	过线板	THREAD GUIDE	3
16	10004185	二孔过线板	THREAD GUIDE	1
		*: 参看专用件表/see the guage list		

17. 链弯针机构(1)/CHAINSTITCH LOOPR FRAME (1)



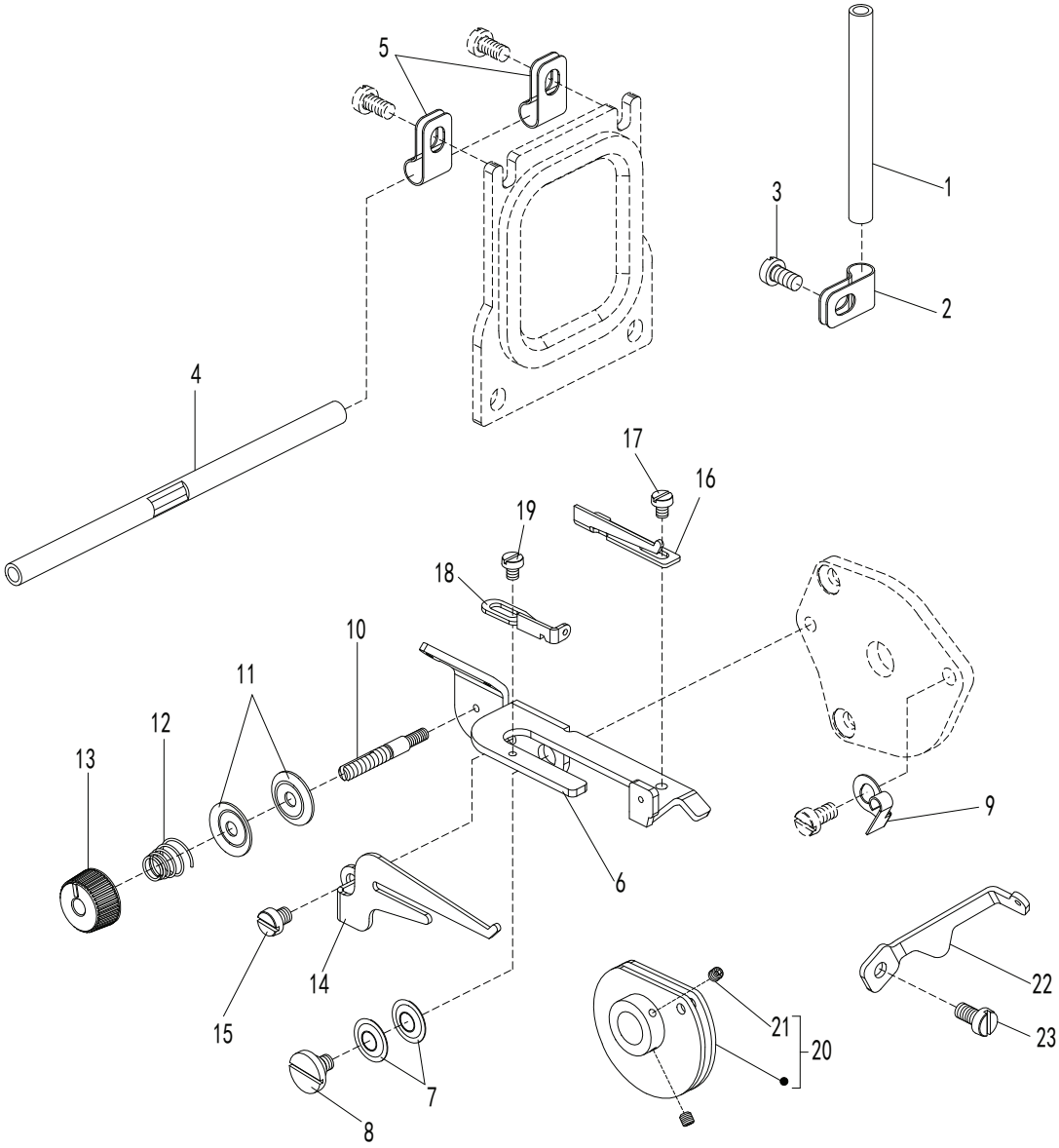
17. 链缝机构 (1)

CHAINSTITCH LOOPER MECHANISM(1)

序号 No.	件号 Pars No.	称 名	Description	数量 Number
1	10009863	拨叉滑块	BLOCK	1
2	10009862	链弯拨叉	LEVER	1
3	10034622	拨叉轴	SHAFT	1
4	10012162	螺钉M5×5	SCREW	1
5	10009576	φ16橡胶塞	PLUG	1
6	10009697	推移调节杆	PIN	1
7	10012162	螺钉M5×5	SCREW	1
8	10034624	调节杆轴	SHAFT	1
9	10009603	摆动叉	HOLDER	1
10	10012162	螺钉M5×5	SCREW	1
11	10034623	链弯针轴	SHAFT	1
12	10009132	销 φ6×25	PIN	1
13	10013019	螺钉M3×4	SCREW	2
14	10009116	链弯针连杆	LINK	1
15	10009540	链弯摆动曲柄	CRANK	1
16	10009164	螺钉M6×0.75×12	BOLT	1
17	10032288	油封 φ10×φ19×4	OIL SEAL	1
18	*	链弯针	CHAINSTITCH LOOPER	1
19	10009325	螺钉SM9/64"×40	SCREW	1
20	10009584	链弯针架	LOOPER HOLDER	1
21	10009245	螺钉M6×0.75×12	BOLT	1
22	10033793	链弯针轴后轴套	SHAFT SLEEVE	1
23	10033793	链弯针轴前轴套	SHAFT SLEEVE	1

*: 参看专用件表/see the guage list

18. 链弯针机构(2) / CHAINSTITCH LOOPR FRAME (2)

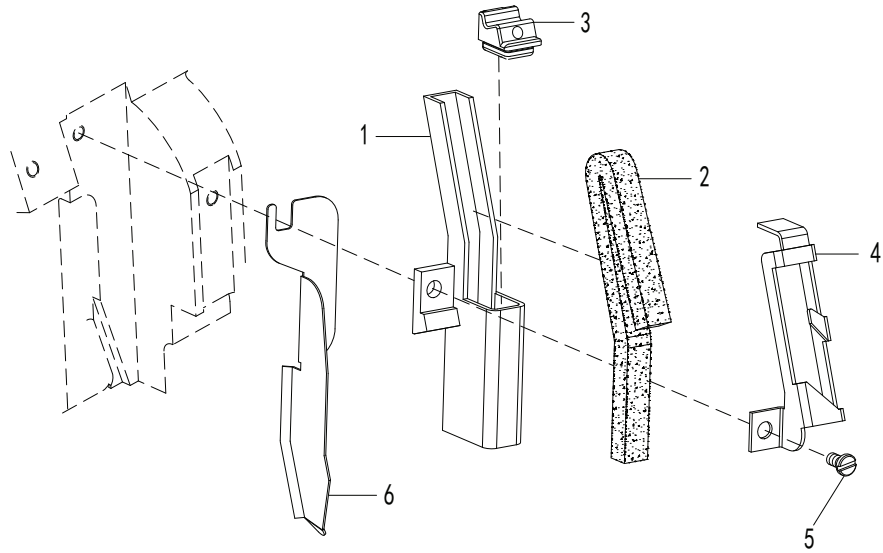


18. 链缝机构 (2)

CHAINSTITCH LOOPER MECHANISM(2)

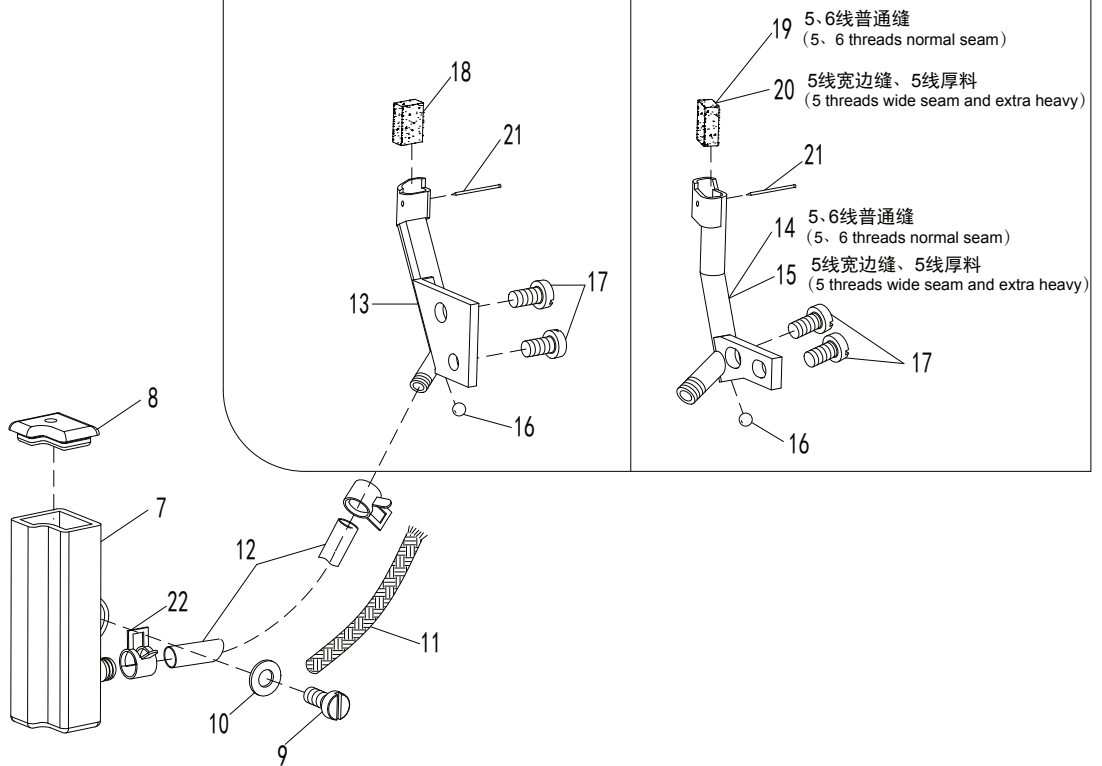
序号 No.	件号 Pars No.	名称	Description	数量 Number
1	10033698	链弯竖过线管	THREAD GUIDE PIPE	1
2	10033733	过线管夹簧	BRACKET	1
3	10010594	螺钉M4×7.5	SCREW	1
4	10033762	链弯横过线管	THREAD GUIDE PIPE	1
5	10033733	过线管夹簧	BRACKET	2
6	10010611	夹线架	BRACKET	1
7	10010556	螺钉	SCREW	1
8	10010596	垫圈	WASHER	2
9	10010602	弹簧	FLAT SPRING	1
10	10010610	螺钉M3×2.4+M4×15	SCREW	1
11	10033739	夹线板	TENSION DISC	2
12	10033738	弹簧	SPRING	1
13	10033737	夹线螺母	KNOB	1
14	10033740	打线架	THREAD GUIDE	1
15	10004171	螺钉M4×4.5	SCREW	1
16	10033735	过线板	THREAD GUIDE	1
17	10009529	螺钉M3×3.8	SCREW	1
18	10033736	过线架	THREAD GUIDE	1
19	10009529	螺钉M3×3.8	SCREW	1
20	10010664	打线凸轮组件	LOOPER THREAD TAKE-	1
21	10010196	螺钉M3×3	SCREW	2
22	10033741	链弯前过线板	THREAD GUIDE	1
23	10010595	螺钉M4×7.5	SCREW	1
*: 参看专用件表/see the guage list				

19.H·R.装置 / H·R. DEVICE



3、4线 (3、4 threads)

5、6线 (5、6 threads)

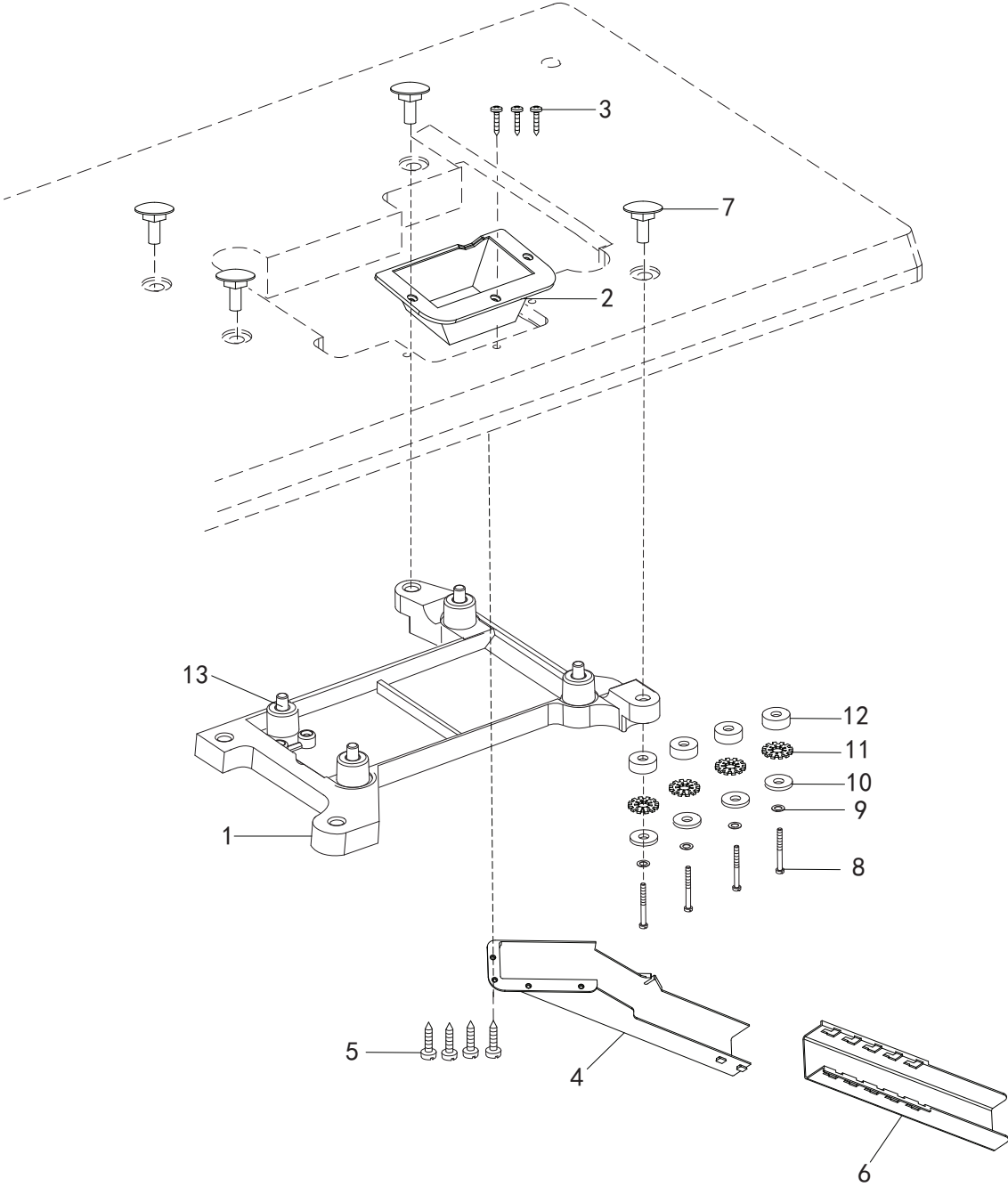


19. H. R. 装置

H. R. DEVICE

序号 No.	件号 Pars No.	名称	Description	数量 Number
1	10033763	上硅油盒	UPPER OIL BOX	1
2	10009330	毛毡	FELT	1
3	10009635	盒盖	COVER	1
4	10033743	毛毡盖	FELT COVER	1
5	10009104	螺钉M4×9.5	SCREW	1
6	10033744	密封板	SEAL PLATE	1
7	10009493	硅油盒	OIL BOX	1
8	10009492	盒盖	COVER	1
9	10009104	螺钉M4×9.5	SCREW	1
10	10003083	4垫圈	WASHER	1
11	10008072	Φ2油线	OIL WICK	1
12	10007796	油管Φ4×Φ6	OIL TUBE	1
13	10009498	硅油盒	SILICONE OIL BOX	1
14	10010471	硅油盒	SILICONE OIL BOX	1
15	10010473	硅油盒	SILICONE OIL BOX	1
16	10009826	Φ4钢球	PLUG	1
17	10010595	M4×7.5螺钉	SCREW	2
18	10009494	油毡	OIL FELT	1
19	10010472	油毡	OIL FELT	1
20	10010474	毛毡	OIL FELT	1
21	70000122	大头针	PIN	1
22	10011471	进油短油管夹	CLAMP	2
*: 参看专用件表/see the guage list				

20. 油盘托架 /OIL TANK MECHANISM

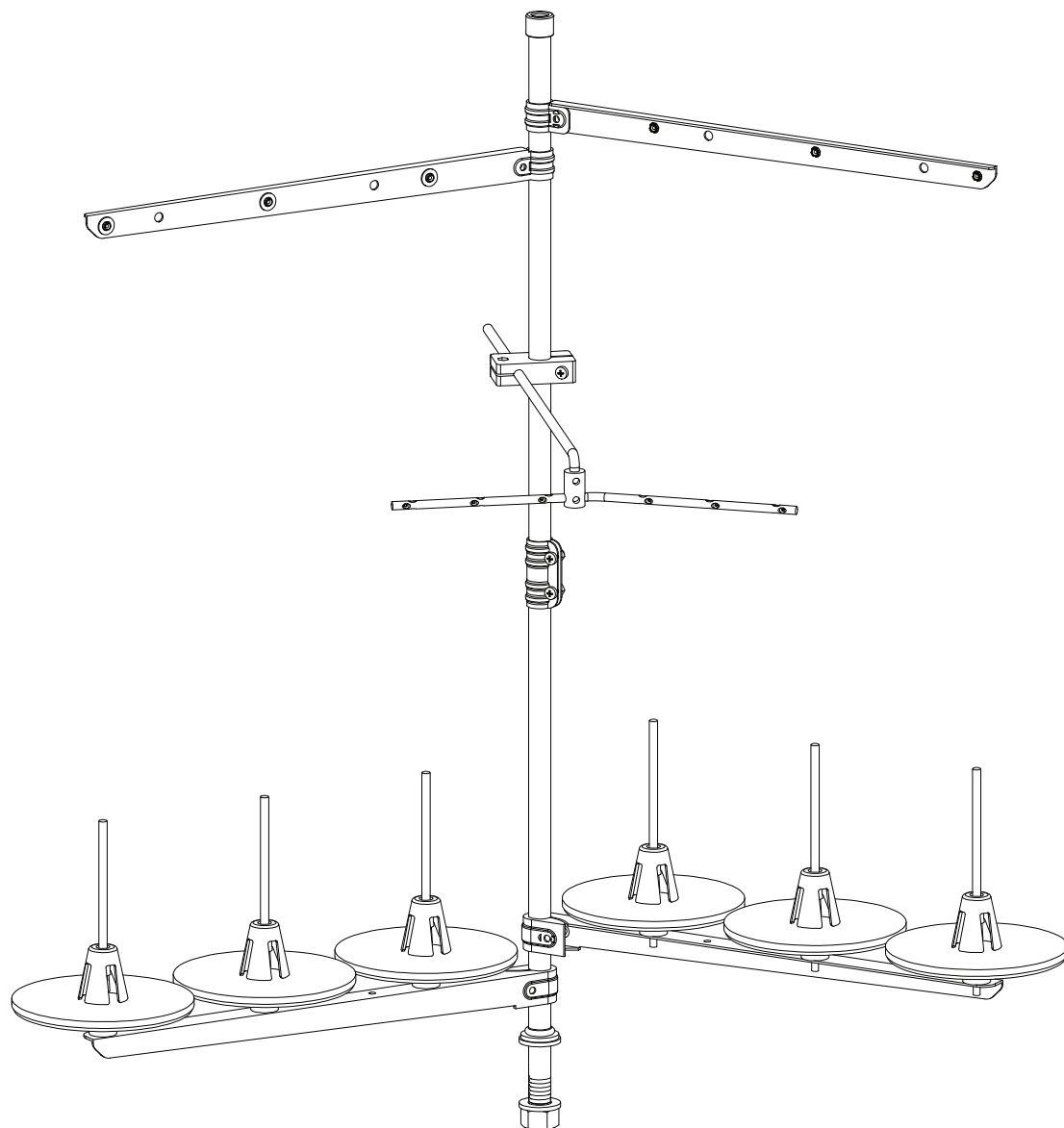


20. 油盘托架

OIL TANK BRACKET

序号 No.	件号 Pars No.	名称	Description	数量 Number
1	10033772	安装托板	MACHINE REST BOARD	1
2	10003944	下料口	WASTE CHUTE	1
3	10008197	螺钉ST4.2×16-C-H	SCREW	3
4	10002891	下料槽上节	WASTE CHUTE	1
5	10008197	螺钉ST4.2×16-C-H	SCREW	4
6	10003225	下料槽下节	WASTE CHUTE	1
7	10009596	螺套	NUT	4
8	10003106	螺钉M8×45	BOLT	4
9	10003331	垫圈	SPRING WASHER	4
10	10009272	垫圈 $\phi 9 \times \phi 24 \times 3$	WASHER	4
11	10009273	垫圈	WASHER	4
12	10009271	油盘安装橡胶垫	CUSHION RUBBER	4
13	10012469	机头垫组件	CUSHION RUBBER	4
*: 参看专用件表/see the guage list				

21. 线架 / THREAD STAND PARTS



21. 过线架

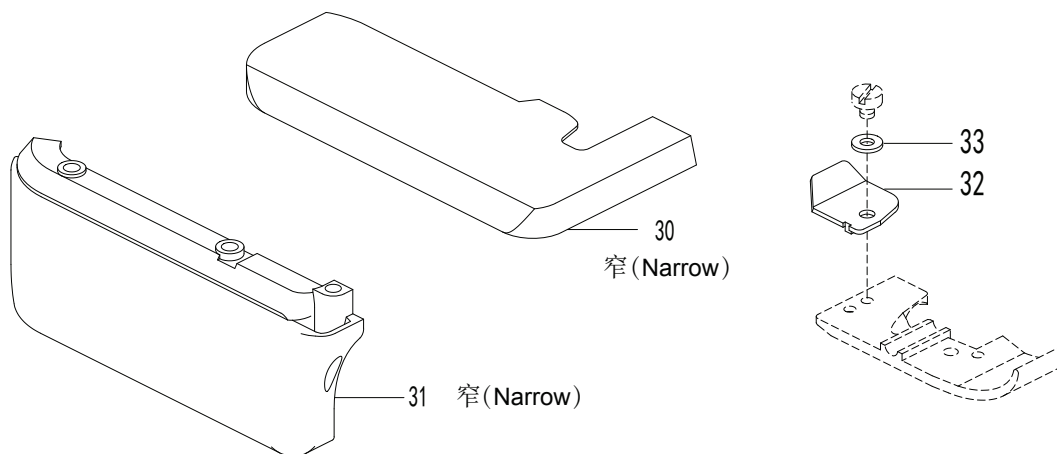
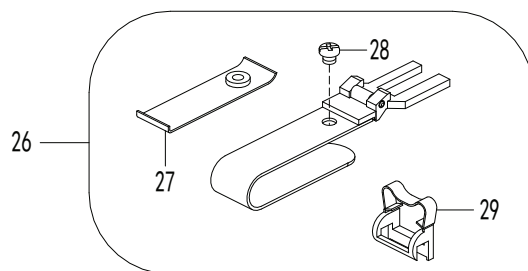
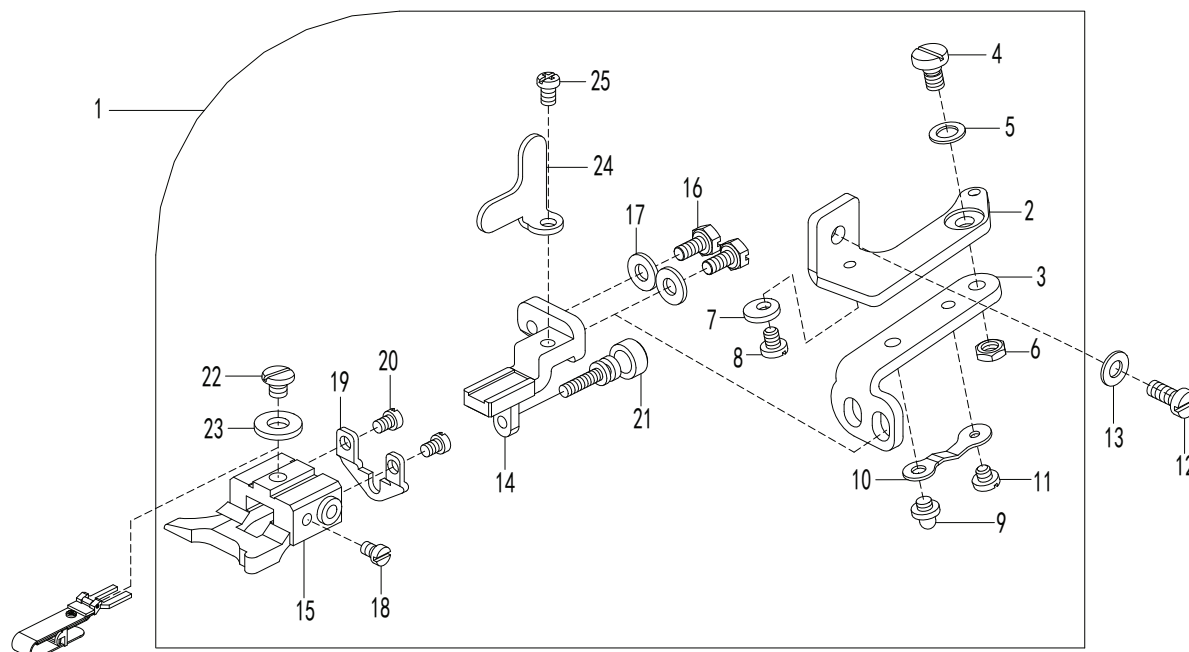
THREAD STAND

序号 No.	件号 Pars No.	名称	Description	数量 Number
1	10005969	六线线架部件	6-SPOOL THREAD STAND ASSEMBLY	1
2	10004956	五线线架部件	5-SPOOL THREAD STAND ASSEMBLY	1
3	10007906	四线线架部件	4-SPOOL THREAD STAND ASSEMBLY	1
4	10008015	三线线架部件	3-SPOOL THREAD STAND ASSEMBLY	1
*:参看专用件表/see the guage list				

22. 专用部件 (1) /SPECIFIC PARTS (1)

卷边器 (Blind hemming)

4线暗缝 (4 threads blind seam)



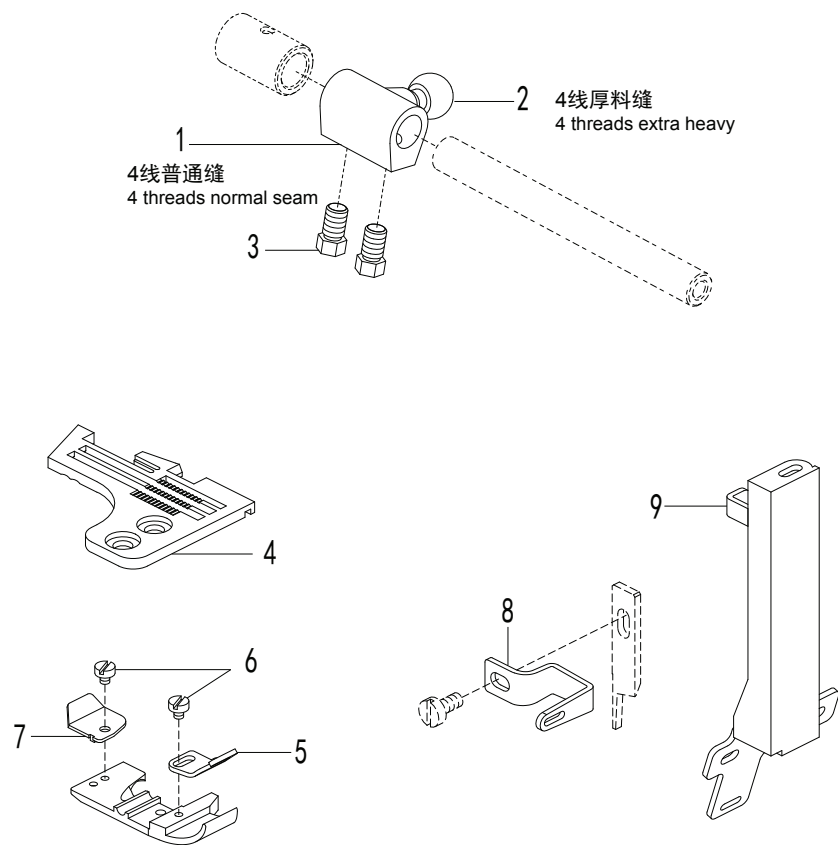
22. 专用部件(1)

SPECIFIC PARTS(1)

序号 No.	件号 Pars No.	名称	Description	数量 Number
1	10010978	折边器组件	HEMMING ASSEMBLY	1
2	10004418	折边器固定板	BRACKET	1
3	10004423	中连接板	HINGE	1
4	10010968	中连接板螺钉	SCREW	1
5	10010963	垫圈 $\phi 5 \times \phi 9 \times 0.7$	SPRING WASHER	1
6	10004424	螺母SM11/64"×40	NUT	1
7	10004413	偏心垫	WASHER	1
8	10010970	螺钉SM9/64"×40	SCREW	1
9	10004422	弹簧板定位柱	PIN	1
10	10004411	弹簧板	FLAT SPRING	1
11	10010971	螺钉SM9/64"×40	SCREW	1
12	10009104	螺钉M4×9.5	SCREW	1
13	10002991	弹性垫圈	SPRING WASHER	1
14	10004415	前连接板	BRACKET	1
15	10004420	折边座	BRACKET	1
16	10010969	前连接板螺钉SM9/64"×40	SCREW	2
17	10004416	垫圈 $\phi 4 \times \phi 9.6 \times 1.2$	WASHER	2
18	10004414	螺钉SM1/8"×44	SCREW	1
19	10004412	折边座固定板	BRACKET	1
20	10010964	螺钉SM1/8"×44	SCREW	2
21	10010966	折边座调节螺钉SM1/8"×44	SCREW	1
22	10004421	螺钉SM11/64"×40	SCREW	1
23	10010967	垫圈 $\phi 5 \times \phi 11.8 \times 1.5$	WASHER	1
24	10004419	扳动板	ADJUSTING PLATE	1
25	10010965	螺钉SM9/64"×40	SCREW	1
26	10004417	折边嘴(组件)	FOLDER ASSEMBLY	1
27	10004429	折边上护板组件	AUXILIARY PLATE	1
28	10004443	螺钉SM1/8"×44(2.5)	SCREW	1
29	10004446	弹簧板	FLAT SPRING	1
30	10004124	大盖	CLOTH PLATE ASSEMBL	1
31	10010010	横盖	SIDE COVER	1
32	10004452	压脚辅助板	UNCURLER	1
33	10004450	垫圈	WASHER	1
*:参看专用件表/see the guage list				

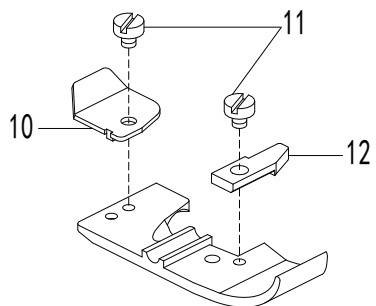
23. 专用部件 (2) /SPECIFIC PARTS (2)

过带装置(Tape attaching)



3线普通缝,3线窄边缝 3 threads normal or narrow seaming

卷边缝·平缝
(Turn down hemming , Plain seaming)



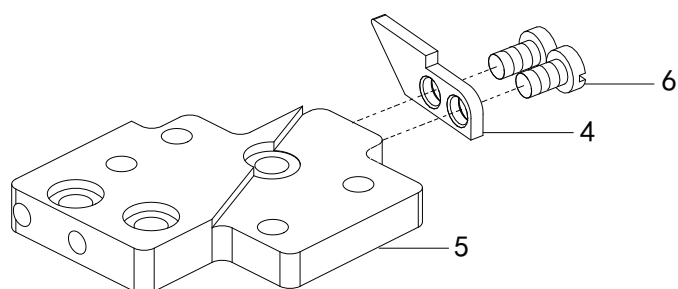
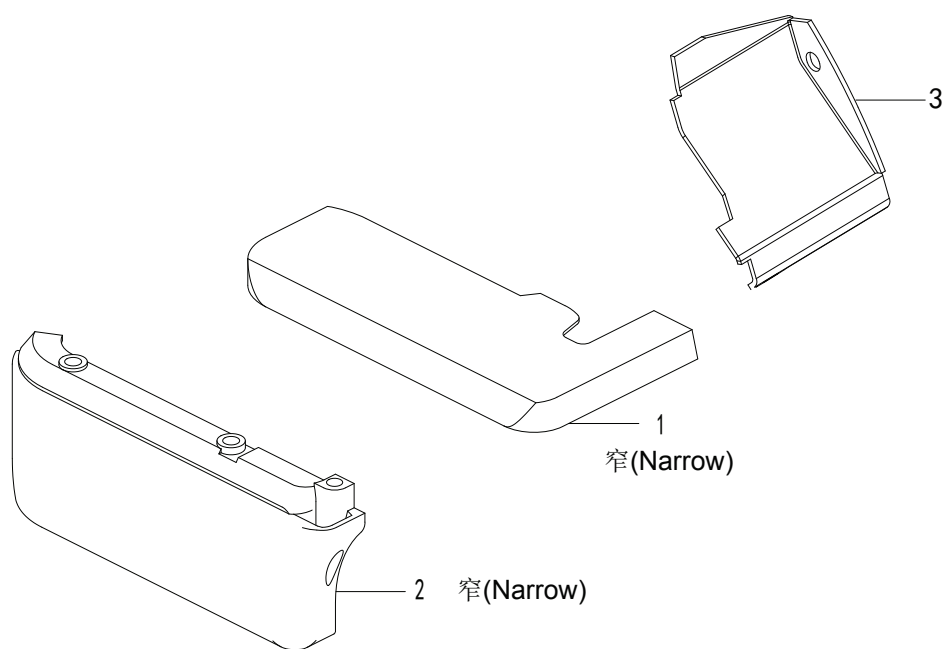
23. 专用部件 (2)

SPECIFIC PARTS (2)

序号 No.	件号 Pars No.	名称	Description	数量 Number
1	10002662	上弯针球曲柄	CRANK	1
2	10004358	上弯针球曲柄	CRANK	1
3	10009163	螺钉	BOLT	2
4	*	针板	NEEDLE PLATE	1
5	10004344	导向带	FABRIC GUARD	1
6	10004343	螺钉	SCREW	1
7	10003190	压脚辅助板	UNCURLER	1
8	10010870	中导带架	TAPE TAKE-UP	1
9	10010895	上导带架	TAPE GUIDE	1
10	10003190	压脚辅助板	UNCURLER	1
11	10003191	螺钉	SCREW	1
12	10003187	挡板	FABRIC GUARD	1
*: 参看专用件表/see the guage list				

24. 专用部件 (3) / SPECIFIC PARTS (3)

回针倒缝 (Back latching)



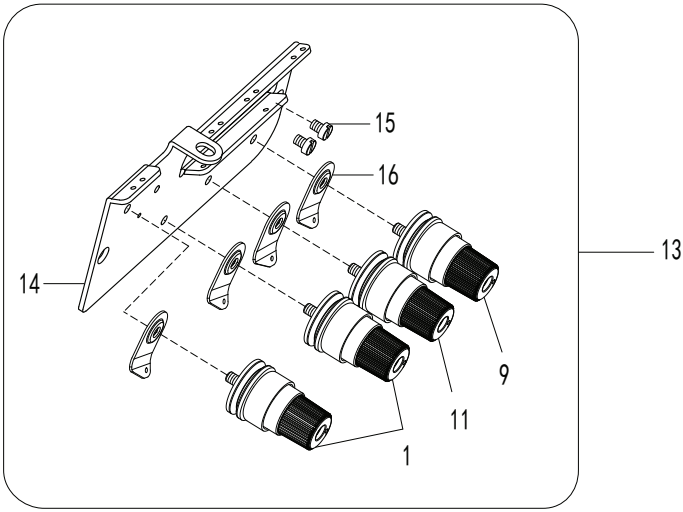
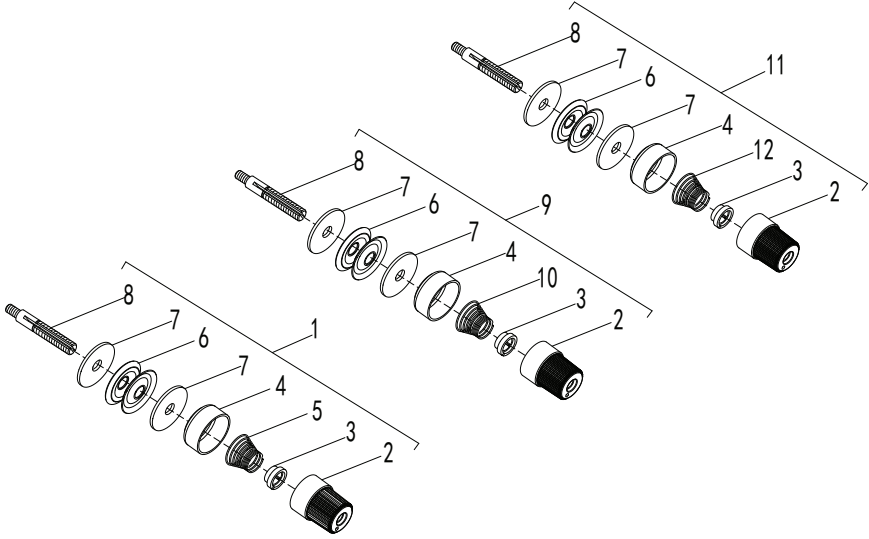
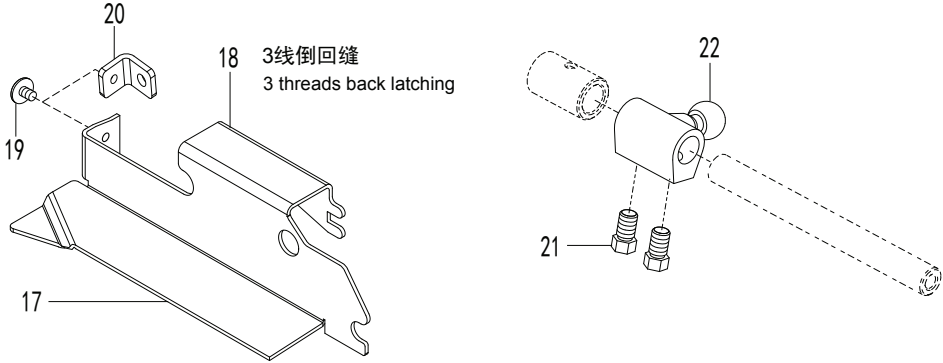
24. 专用部件 (3)

SPECIFIC PARTS (3)

序号 No.	件号 Pars No.	名称	Description	数量 Number
1	10012758	大盖组件	CLOTH PLATE ASSEMBL	1
2	10010010	横盖	SIDE COVER	1
3	10012719	前盖中	FRONT COVER	1
4	10012761	针板键	NEEDLE PLATE KEY	1
5	10012762	针板前安装板	BRACKET	1
6	10010888	螺钉	SCREW	2
		*: 参看专用件表/see the guage list		

25. 专用部件 (4) / SPECIFIC PARTS (4)

4线倒回缝
(4 threads back latching)



25. 专用部件(4)

SPECIFIC PARTS(4)

序号 No.	件号 Pars No.	名称	Description	数量 Number
1	10039507	直针夹线器组件	THREAD TENSION ASSE	2
2	10006875	夹线螺母	NUT	1
3	10003111	防松垫	RATCHET	1
4	10006877	夹线碗	CUP	1
5	10009534	弹簧	SPRING	1
6	10003116	夹线盘	TENSION DISC	2
7	10009010	布垫	FELT	1
8	10003112	螺钉	SCREW STUD	1
9	10039509	下弯针夹线器组件	THREAD TENSION ASSE	1
10	10009532	弹簧	SPRING	1
11	10039508	上弯针夹线器组件	THREAD TENSION ASSE	1
12	10009533	弹簧	SPRING	1
13	10012814	直、弯针夹线器组件	THREAD TENSION ASSE	1
14	10005979	夹线器座	THREAD GUIDE	1
15	10009290	螺钉	SCREW	2
16	10003115	过线板	THREAD GUIDE	4
17	10012661	内盖板	FABRIC GUARD	1
18	10013123	内盖板	FABRIC GUARD	1
19	10012659	螺钉	SCREW	1
20	10012660	内盖板支架	BRACKET	1
21	10009163	螺钉	BOLT	2
22	10004358	上弯针球曲柄	CRANK	1
*:参看专用件表/see the guage list				

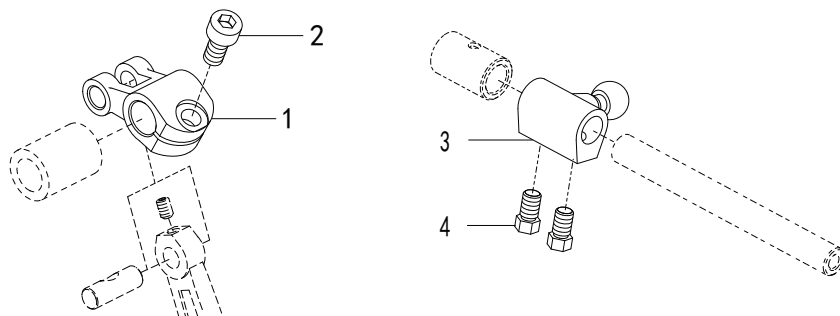
26. 专用部件 (5) / SPECIFIC PARTS (5)

6线中厚料包缝

Over seaming on medium weight fabric

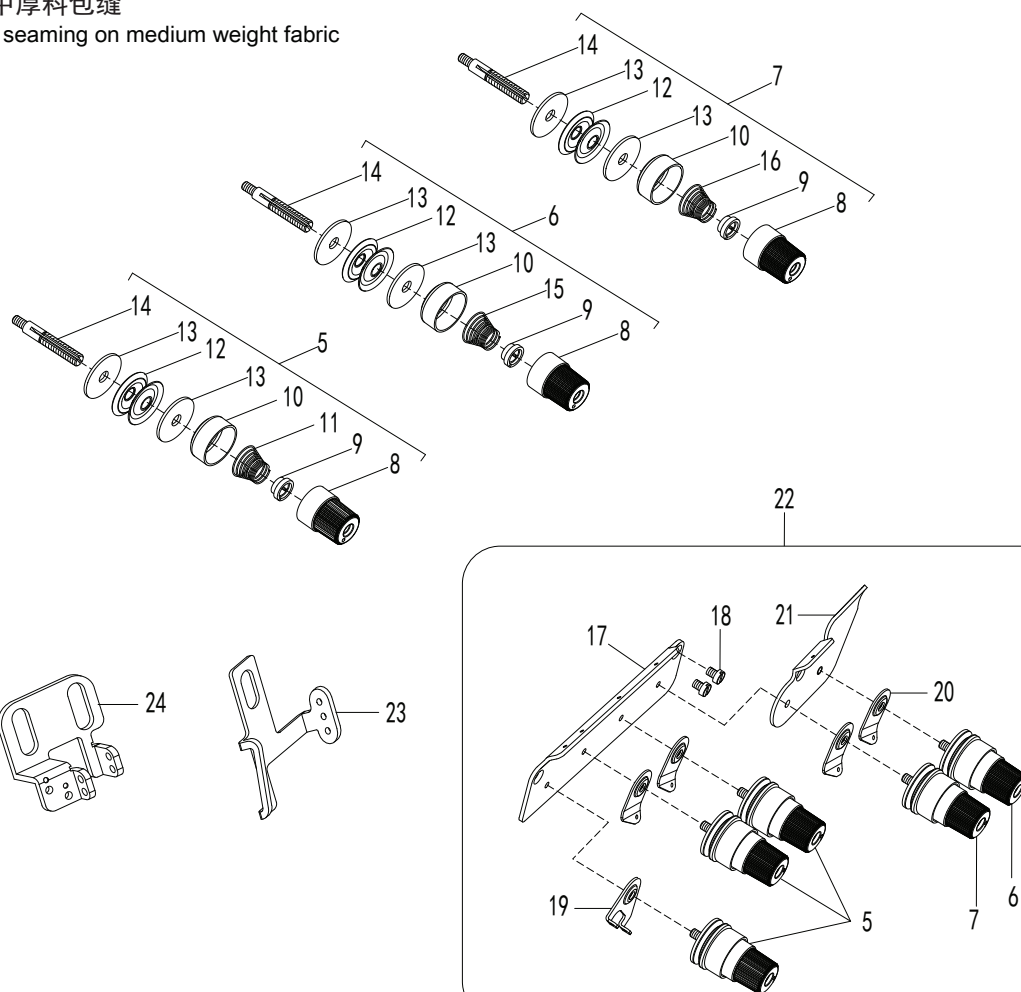
5线极厚料包缝

Over seaming on extra heavy weight fabric



6线中厚料包缝

Over seaming on medium weight fabric



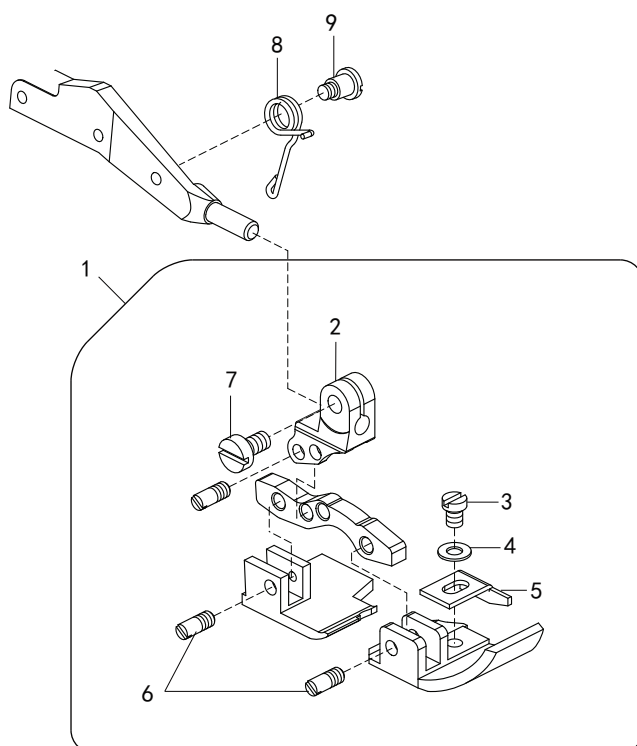
26. 专用部件 (5)

SPECIFIC PARTS (5)

序号 No.	件号 Pars No.	名称	Description	数量 Number
1	10012245	针杆传动轴曲柄	CRANK	1
2	10009164	螺钉	BOLT	1
3	10004358	上弯针球曲柄	CRANK	1
4	10009163	螺钉	BOLT	2
5	10003110	直针夹线器组件	THREAD TENSION ASSE	3
6	10003114	下弯针夹线器组件	THREAD TENSION ASSE	1
7	10003118	上弯针夹线器组件	THREAD TENSION ASSE	1
8	10009531	夹线螺母	NUT	1
9	10003111	防松垫	RATCHET	1
10	10003113	夹线碗	CUP	1
11	10009534	弹簧	SPRING	1
12	10003116	夹线盘	TENSION DISC	2
13	10003117	布垫	FELT	1
14	10003112	螺钉	SCREW STUD	1
15	10009532	弹簧	SPRING	1
16	10009533	弹簧	SPRING	1
17	10003109	夹线器座	THREAD GUIDE	1
18	10009290	螺钉	SCREW	2
19	10004185	二孔过线板	THREAD GUIDE	1
20	10003115	过线板	THREAD GUIDE	4
21	10005934	下弯针夹线器座	THREAD GUIDE	1
22	10012477	直、弯针夹线器组件	THREAD TENSION ASSE	1
23	10012479	直针右过线架	THREAD GUIDE	1
24	10012478	直针左过线架	THREAD GUIDE	1
*: 参看专用件表/see the guage list				

27. 专用部件 (6) / SPECIFIC PARTS (6)

5线极厚料包缝
(Over seaming on extra heavy weight fabric)

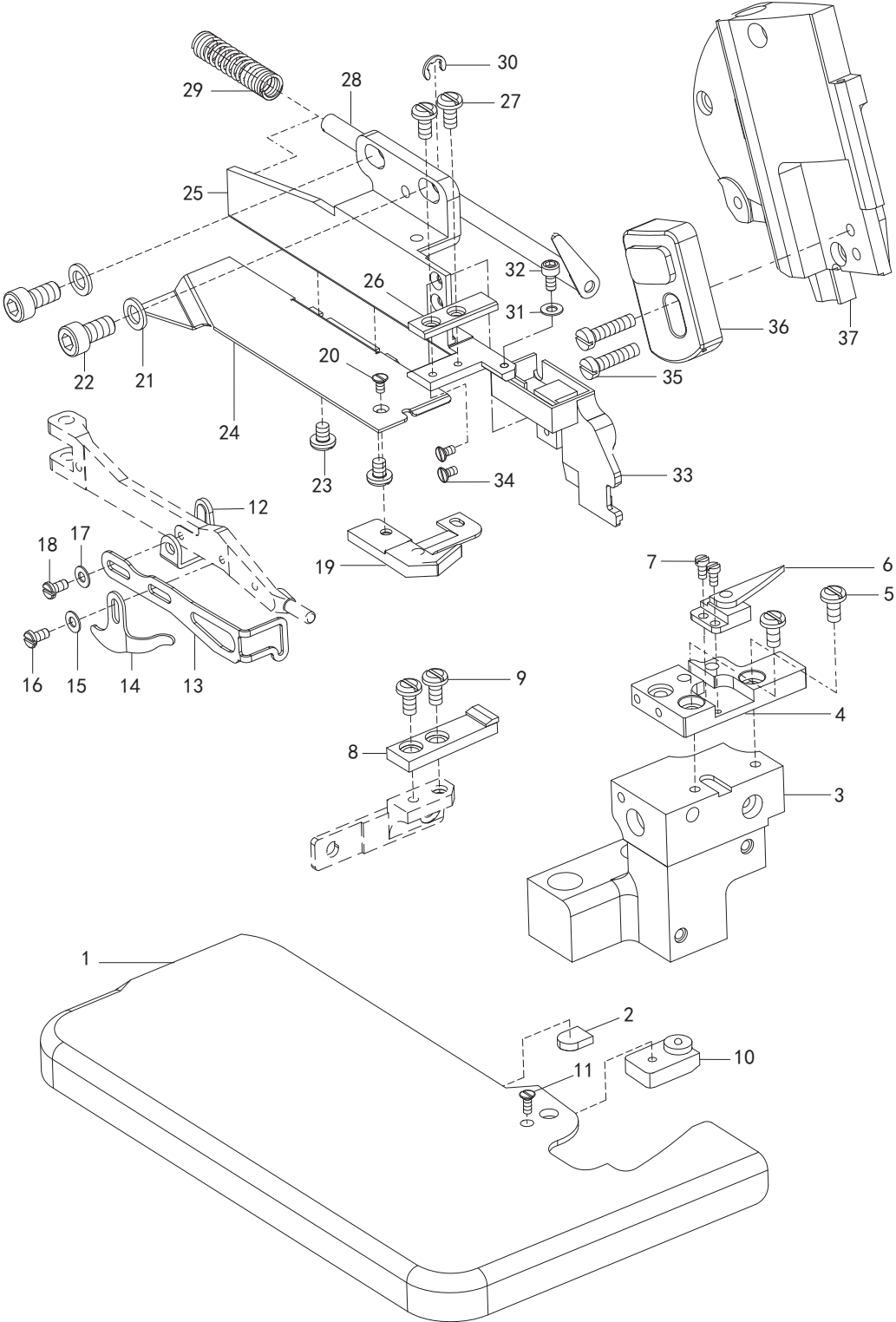


27. 专用部件 (6)

SPECIFIC PARTS (6)

序号 No.	件号 Pars No.	名称	Description	数量 Number
1	*	压脚组件	PRESSER FOOT ASSEMB	1
2	10003268	销	PIN	1
3	10005223	螺钉	SCREW	1
4	10005222	垫圈	WASHER	1
5	10012261	挡板	FABRIC GUARD	1
6	10003268	销	PIN	2
7	10009580	螺钉	SCREW	1
8	10012260	弹簧	SPRING	1
9	10009501	螺钉	SCREW	1
		*: 参看专用件表/see the guage list		

28. 三、四线三自动机构 / THREE OR FOUR THREADS AUTOMATIC FRAME

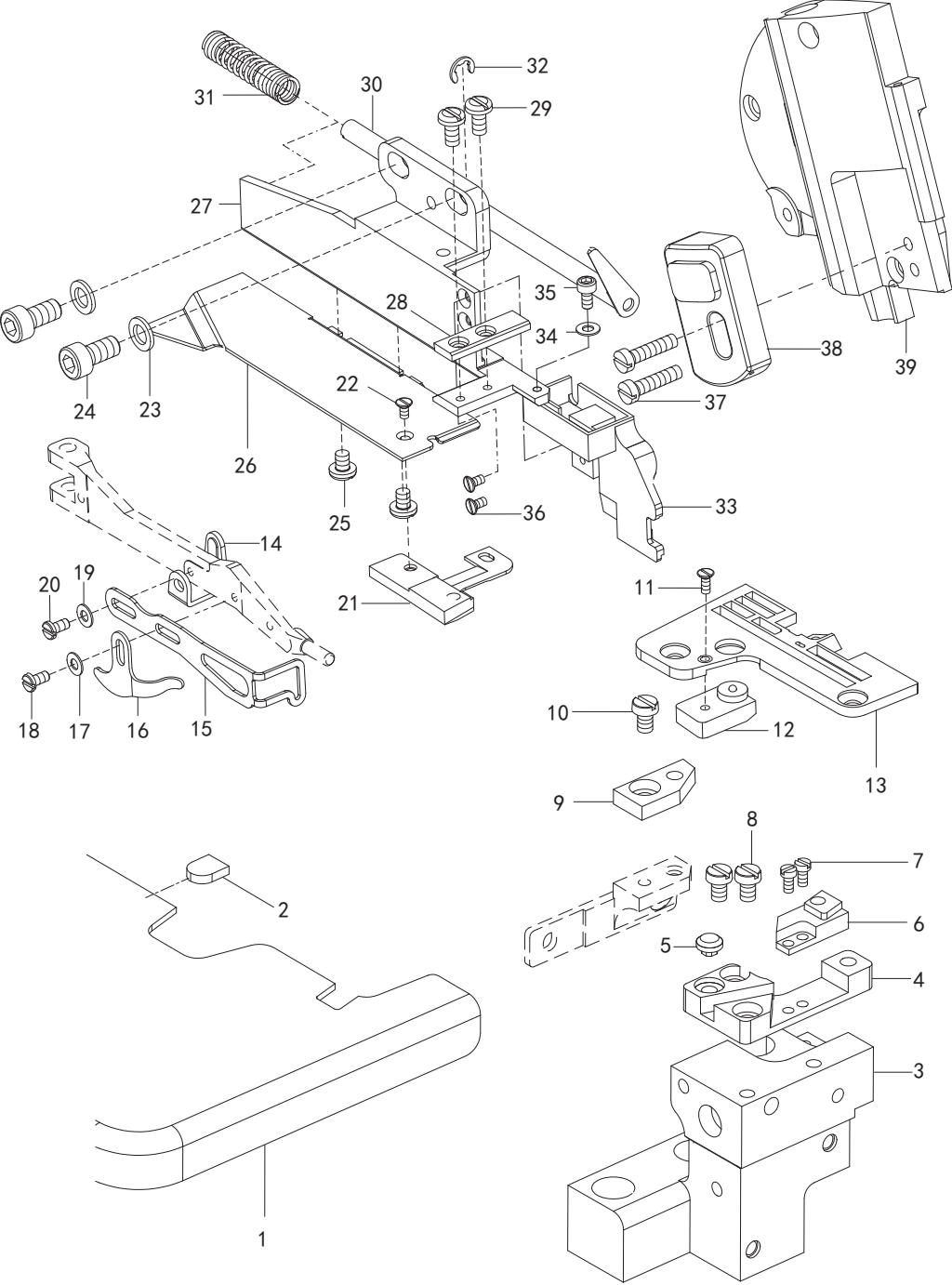


28. 三、四线三自动机构

THREE OR FOUR THREAD AUTOMATIC FRAME

序号 No.	件号 Pars No.	名称	Description	数量 Number
1	10042986	大盖组件	CLOTH PLATE ASSEMBL	1
2	10037469	缝台安全开关磁铁	SAFETY SWITCH MAGNE	1
3	10042972	下刀架座	BRACKET	1
4	10042973	针板座	NEEDLE PLATE	1
5	10009104	螺钉M4×9.5	SCREW	2
6	10047370	抬压脚接收器组件	THE RECEIVER COMPON	1
7	10011670	螺钉M2.5×4.5	SCREW	2
8	10033749	针板托	NEEDLE PLATE SUPPOR	1
9	10009104	螺钉M4×9.5	SCREW	2
10	10047371	前切接收器组件	THE RECEIVER COMPON	1
11	10009379	螺钉M2.5×5.8	SCREW	1
12	10039027	压脚安全开关组件	SAFETY SWITCH COMPO	1
13	10009320	防护架	PROTECTIVE FRAME	1
14	10041635	切刀防护板	PROTECTIVE FRAME	1
15	10009192	垫圈 $\phi 5.3 \times \phi 11 \times 1.4$	WASHER	1
16	10009597	螺钉M3×5	SCREW	1
17	10009192	垫圈 $\phi 5.3 \times \phi 11 \times 1.4$	WASHER	1
18	10009600	螺钉M3×6	SCREW	1
19	10047373	后切接收器组件	THE RECEIVER COMPON	1
20	10009379	螺钉M2.5×4.8	SCREW	1
21	10012830	垫圈 $\phi 6.2 \times \phi 10.3 \times 1.2$	WASHER	2
22	10003169	螺钉M6×12	SCREW	2
23	10038921	螺钉	SCREW	2
24	10047832	吸风管组件	SUCTION DUCT COMPON	1
25	10037460	拖布轮剪刀固定架	FIXED FRAME	1
26	10037797	定刀	FIXED KNIFE	1
27	10038921	螺钉	SCREW	2
28	10037468	动刀组件	MOVED KNIFE COMPONE	1
29	10025648	弹簧	SPRING	1
30	10025649	开口挡圈	OPEND RING	1
31	10009599	垫圈 $\phi 3.4 \times \phi 7 \times 0.5$	WASHER	1
32	10002975	螺钉M3×6	SCREW	1
33	10047367	后切发射器组件	EMITTER COMPONENT	1
34	10009379	螺钉M2.5×4.8	SCREW	1
35	10003001	螺钉M3×10	SCREW	2
36	10047368	上光电传感器组件	PHOTOELECTRIC SENSO	1
37	10042968	侧盖	SIDE COVER	1
*:参看专用件表/see the guage list				

29. 五、六线三自动机构 / FIVE OR SIX THREADS AUTOMATIC FRAME

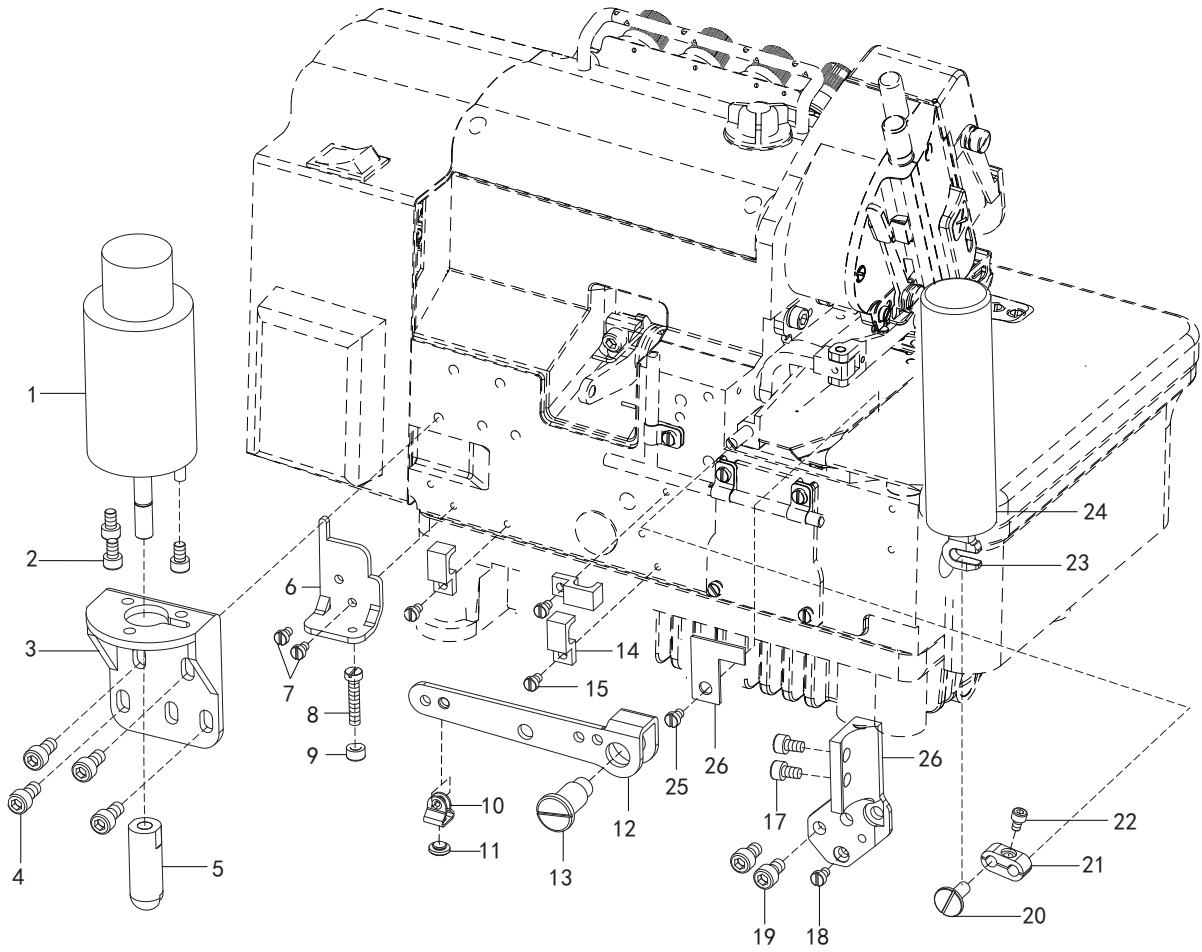


29. 五、六线三自动机构

FIVE OR SIX THREADS AUTOMATIC FRAME

序号 No.	件号 Pars No.	称 名	Description	数量 Number
1	10042986	大盖组件	CLOTH PLATE ASSEMBLY	1
2	10037469	缝台安全开关磁铁	SAFETY SWITCH MAGNET	1
3	10009505	下刀座	BRACKET	1
4	10042977	针板前安装板(三自动机型)	BRACKET	1
5	10009582	防震橡胶垫	CUSHION RUBBER	1
6	10047372	抬压脚接收器组件	THE RECEIVER COMPONENT	1
7	10011670	螺钉M2.5×4.5	SCREW	2
8	10009104	螺钉M4×9.5	SCREW	2
9	10030433	针板后安装板(三自动机型)	BRACKET	1
10	10010595	螺钉M4×7.5	SCREW	1
11	10009379	螺钉M2.5×5.8	SCREW	1
12	10047371	前切接收器组件	THE RECEIVER COMPONENT	1
13	*	针板	NEEDLE PLATE	1
14	10039027	压脚安全开关组件	SAFETY SWITCH COMPONET	1
15	10009320	防护架	PROTECTIVE FRAME	1
16	10041635	切刀防护板	PROTECTIVE FRAME	1
17	10009192	垫圈 $\phi 5.3 \times \phi 11 \times 1.4$	WASHER	1
18	10009597	螺钉M3×5	SCREW	1
19	10009192	垫圈 $\phi 5.3 \times \phi 11 \times 1.4$	WASHER	1
20	10009600	螺钉M3×6	SCREW	1
21	10047373	后切接收器组件	THE RECEIVER COMPONENT	1
22	10009379	螺钉M2.5×4.8	SCREW	1
23	10012830	垫圈 $\phi 6.2 \times \phi 10.3 \times 1.2$	WASHER	2
24	10003169	螺钉M6×12	SCREW	2
25	10038921	螺钉	SCREW	2
26	10047832	吸风管组件	SUCTION DUCT COMPONENT	1
27	10037460	拖布轮剪刀固定架	FIXED FRAME	1
28	10037797	定刀	FIXED KNIFE	1
29	10038921	螺钉	SCREW	2
30	10037468	动刀组件	MOVED KNIFE COMPONET	1
31	10025648	弹簧	SPRING	1
32	10025649	开口挡圈	OPEND RING	1
33	10047367	后切发射器组件	EMITTER COMPONENT	1
34	10009599	垫圈 $\phi 3.4 \times \phi 7 \times 0.5$	WASHER	1
35	10002975	螺钉M3×6	SCREW	1
36	10009379	螺钉M2.5×4.8	SCREW	2
37	10003001	螺钉M3×10	SCREW	2
38	10047368	上光电传感器组件	PHOTOELECTRIC SENSOR	1
39	20015567	侧盖	SIDE COVER	1
		*:参看专用件表/see the guage list		

30. 电磁铁驱动机构 /ELECTRIC DRIVE FRAME

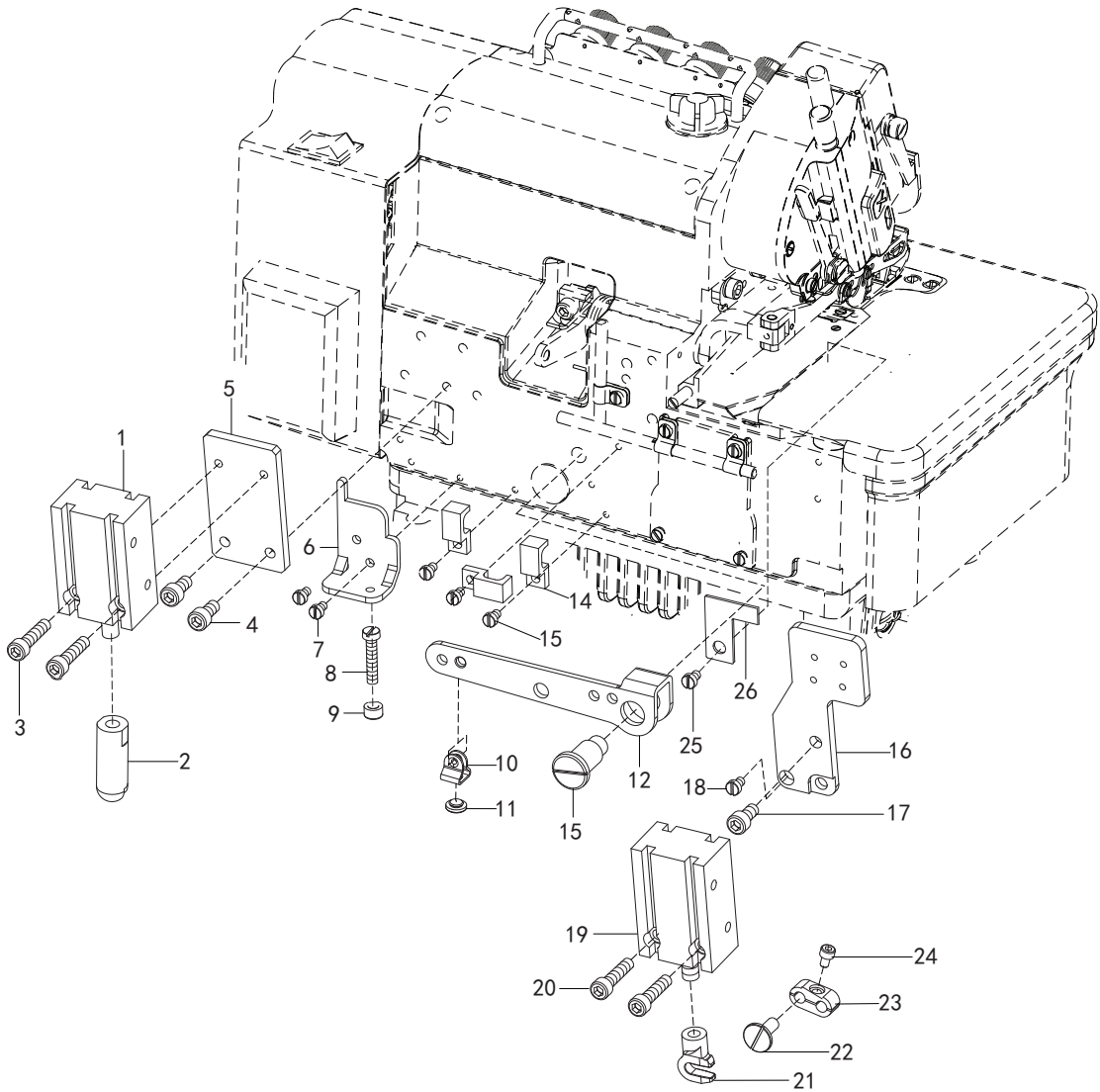


30. 电磁铁驱动机构

ELECTRIC DRIVE FRAME

序号 No.	件号 Pars No.	名称	Description	数量 Number
1	10049859	抬压脚电磁铁	ELECTROMAGNET	1
2	10003165	螺钉M5×10	SCREW	3
3	10041531	抬压脚电磁铁固定板	ELECTROMAGNET FIXED	1
4	10001839	螺钉M6×10	SCREW	4
5	10037034	抬压脚顶杆	PRESSER FOOT PLUNGE	1
6	10042964	制动板	BRAKE PLATE	1
7	10009104	螺钉M4×9.5	SCREW	2
8	10009623	螺钉M5×24	SCREW	1
9	10009467	螺母M5	NUT	1
10	10041870	卡扣	CARD BUCKLE	1
11	10041871	缓冲块	BUFFER BLOCK	1
12	10041532	抬压脚杠杆	LEVER	1
13	10009621	螺钉	SCREW	1
14	10042967	小线卡	SMALL LINE CARD	3
15	10010595	螺钉M4×7.5	SCREW	3
16	10042969	剪线电磁铁安装座	SADDLE	1
17	10003169	螺钉M6×12	SCREW	2
18	10009195	螺钉M4×7.8	SCREW	2
19	10003169	螺钉M6×12	SCREW	1
20	10037477	切刀连杆销	CONNECTING ROD PIN	1
21	10037475	切刀连杆	CONNECTING ROD	1
22	10012752	螺钉M4×10	SCREW	1
23	10037484	剪线气缸接头	CONTACT	1
24	10049858	剪线电磁铁组件	POINT MAGNETIC COMP	1
25	10014441	螺钉M4×6	SCREW	1
26	10042970	压线板	LINE PRESSING BOARD	1
*: 参看专用件表/see the guage list				

31. 气动驱动机构 / PNEUMATIC DRIVE FRAME



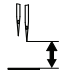

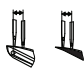


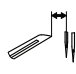
31. 气动驱动机构

PNEUMATIC DRIVE FRAME

序号 No.	件号 Pars No.	名称	Description	数量 Number
1	10049555	方气缸组件	THE SQUARE CYLINDER	1
2	10037034	抬压脚顶杆	JOINT	1
3	10006118	螺钉M5×25	SCREW	2
4	10001839	螺钉M6×10	SCREW	2
5	10049385	抬压脚气缸固定板	CYLINDER FIXED PLATE	1
6	10042964	制动板	BRAKE PLATE	1
7	10009104	螺钉M4×9.5	SCREW	2
8	10009623	螺钉M5×24	SCREW	1
9	10009467	螺母M5	NUT	1
10	10041870	卡扣	CARD BUCKLE	1
11	10041871	缓冲块	BUFFER BLOCK	1
12	10041532	抬压脚杠杆	LEVER	1
13	10009621	螺钉	SCREW	1
14	10042967	小线卡	SMALL LING CARD	3
15	10010595	螺钉M4×7.5	SCREW	3
16	10037033	剪线气缸固定板	SADDLE	1
17	10001839	螺钉M6×10	SCREW	1
18	10009195	螺钉M4×7.8	SCREW	1
19	10049556	气缸组件	CYLINDER COMPONENTS	1
20	10006118	螺钉M5×25	SCREW	2
21	10037484	剪线气缸接头	CONTACT	1
22	10037477	切刀连杆销	CONNECTING ROD PIN	1
23	10037475	切刀连杆	CONNECTING ROD	1
24	10012752	螺钉M4×10	SCREW	1
25	10014441	螺钉M4×6	SCREW	1
26	10042970	压线板	LINE PRESSING BOARD	1
		*:参看专用件表/see the guage list		

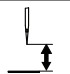

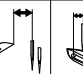


调整标准表 Adjustment dimensions

(mm)

							
ZJ893-5-38	10.6	3.9	3.3	0.9~1.1	5.5	1.5	
ZJ893-5-70	10.6	3.9	3.3	0.9~1.1	5.5	1.5	
ZJ893-5-86	12.0	3.6	3.3	0.9~1.1	5.5	1.5	
ZJ893-6-355	10.6	3.9	3.3	0.9~1.1	5.5	1.5	

调整标准表 Adjustment dimensions

(mm)

						
ZJ893-3-01	10.1	4.2	3.3	0.9~1.1	5.5	
ZJ893-3-16S2	10.1	4.2	3.3	0.9~1.1	6.0	
ZJ893-3-17	10.1	4.2	3.3	0.9~1.1	5.5	
ZJ893-3-180	10.1	4.2	3.3	0.9~1.1	5.5	
ZJ893-4-13	10.4	4.2	4.0	0.9~1.1	5.5	
ZJ893-4-13H	10.6	4.2	3.3	0.9~1.1	6.0	
ZJ893-4-181	10.4	4.2	4.0	0.9~1.1	5.5	

标准使用的缝纫针 Standard needle

	针号 Organ DCx27		
ZJ893-5-38	14		
ZJ893-5-70	14		
ZJ893-5-86	21		
ZJ893-6-355	14		

标准使用的缝纫针 Standard needle

	针号 Organ DCx27		
ZJ893-3-01	11		
ZJ893-3-16S2	11		
ZJ893-3-17	11		
ZJ893-3-180	11		
ZJ893-4-13	11		
ZJ893-4-13H	11		
ZJ893-4-181	11		

针号对照表 Comparison table of equivalent sizes

机针: Needle: DCX27	#	9	11	14	16	18	21		
	Nm	65	75	90	100	110	130		

专用件目录表 GAUGE PARTS LIST

机型	针板	主送料牙组件	主送料牙	辅助送料牙	差动送料牙	压脚	压脚吐线舌	上弯针	下弯针	上刀	下刀	包缝护针板	
												前	后
												OVERLOCK NEEDLE GUARD FRONT	REAR
ZJ893-3-17	10009578	10033777	10003209	10003208	10033778	10002849	10004564	10009609	10009516	10009611	10010866	10009313	10009517
ZJ893-3-16S2	10013122	10013121	10006250	10006251	10013120	10002849	10004337	10009609	10009516	10009611	10010866	10009313	10009517
ZJ893-3-180	10013122	10013130	10006268	10003208	10013133	10006252	10006253	10011061	10009516	10009611	10010866	10009313	10009517
ZJ893-3-01	10010961	10010977	10004426	10003208	10010974	10004453	10004451	10009609	10009516	10009611	10010866	10009313	10009517
ZJ893-4-13	10012190	10009579	10003209	10003208	10003208	10004345	10004342	10011061	10009516	10009611	10010866	10009313	10009517
ZJ893-4-13H	10051311	10051316	10003209	10051312	10033778	10004345	10005977	10011061	10009516	10009611	10010866	10009313	10009517
ZJ893-4-181	10012760	10012809	10005899	10005903	10012810	10005978	10006175	10012759	10009516	10009611	10010866	10009313	10009517
ZJ893-5-38	10004162	10033781	10004166	10004167	10033782	10033780		10009403	10009516	10009611	10009765	10009674	10009517
ZJ893-5-70	10003338	10012455	10005715	10005694	10012465	10009652		10009403	10009516	10009611	10009765	10009674	10009517
ZJ893-5-86	10005227	10012264	10005133	10005134	10012287	10012259		10012288	10009516	10009611	10009765	10009674	10009517
ZJ893-6-355	10005617	10033781	10004166	10004167	10033782	10012698		10011061	10009516	10009611	10009765	10009674	10009517

专用件目录表 GAUGE PARTS LIST

机型	链弯针	链缝护针板	针夹	机针	直针夹线器组件	上弯针夹线器组件	下弯针夹线器组件	直驱手轮	线架		
										前	后
										OVERLOCK NEEDLE GUARD FRONT	REAR
ZJ893-3-17			10009269	10021310	10006902	10006751	10006879	20012565	10008015		
ZJ893-3-16S2			10009269	10021310	10006902	10006751	10006879	20012565	10008015		
ZJ893-3-180			10009269	10021310	10006902	10006751	10006879	20012565	10008015		
ZJ893-3-01			10009269	10021310	10006902	10006751	10006879	20012565	10008015		
ZJ893-4-13			10010104	10021310	10006902	10006751	10006879	20012565	10007906		
ZJ893-4-13H			10010104	10021310	10006902	10006751	10006879	20012565	10007906		
ZJ893-4-181			10010503	10021310	10006902	10006751	10006879	20018606	10007906		
ZJ893-5-38	10009602	10010551	10009254	10021311	10006902	10006751	10006879	20018606	10004956		
ZJ893-5-70	10009602	10009677	10010110	10021311	10006902	10006751	10006879	20018606	10004956		
ZJ893-5-86	10009602	10009677	10010110	10036376	10006902	10006751	10006879	20012565	10004956		
ZJ893-6-355	10009602	10009677	10010039	10021311	10006902	10006751	10006879	20018606	10005969		